

ARG55379 anti-Melanocortin 3 Receptor antibody

Package: 100 µl
Store at: -20°C

Summary

Product Description	Rabbit Polyclonal antibody recognizes Melanocortin 3 Receptor
Tested Reactivity	Hu
Tested Application	FACS, WB
Host	Rabbit
Clonality	Polyclonal
Isotype	IgG
Target Name	Melanocortin 3 Receptor
Species	Human
Immunogen	KLH-conjugated synthetic peptide corresponding to aa. 86-112 (Center) of Human Melanocortin 3 Receptor.
Conjugation	Un-conjugated
Alternate Names	MC3-R; OQTL; OB20; BMIQ9; Melanocortin receptor 3; MC3

Application Instructions

Application table	Application	Dilution
	FACS	1:10 - 1:50
	WB	1:1000
Application Note	* The dilutions indicate recommended starting dilutions and the optimal dilutions or concentrations should be determined by the scientist.	
Positive Control	K562	

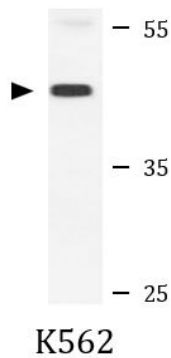
Properties

Form	Liquid
Purification	Purification with Protein A and immunogen peptide.
Buffer	PBS and 0.09% (W/V) Sodium azide
Preservative	0.09% (W/V) Sodium azide
Storage instruction	For continuous use, store undiluted antibody at 2-8°C for up to a week. For long-term storage, aliquot and store at -20°C or below. Storage in frost free freezers is not recommended. Avoid repeated freeze/thaw cycles. Suggest spin the vial prior to opening. The antibody solution should be gently mixed before use.
Note	For laboratory research only, not for drug, diagnostic or other use.

Bioinformation

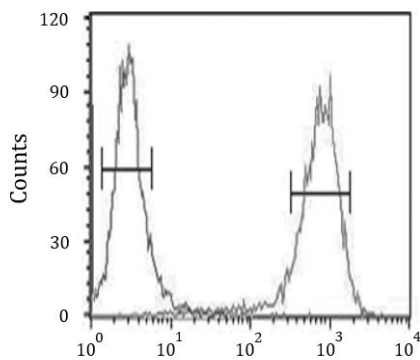
Database links	GeneID: 4159 Human Swiss-port # P41968 Human
Gene Symbol	MC3R
Gene Full Name	melanocortin 3 receptor
Background	This gene encodes a G-protein-coupled receptor for melanocyte-stimulating hormone and adrenocorticotrophic hormone that is expressed in tissues other than the adrenal cortex and melanocytes. This gene maps to the same region as the locus for benign neonatal epilepsy. Mice deficient for this gene have increased fat mass despite decreased food intake, suggesting a role for this gene product in the regulation of energy homeostasis. Mutations in this gene are associated with a susceptibility to obesity in humans. [provided by RefSeq, Jul 2008]
Function	Receptor for MSH (alpha, beta and gamma) and ACTH. This receptor is mediated by G proteins which activate adenylate cyclase. Required for expression of anticipatory patterns of activity and wakefulness during periods of limited nutrient availability and for the normal regulation of circadian clock activity in the brain. [UniProt]
Research Area	Cell Biology and Cellular Response antibody; Metabolism antibody; Neuroscience antibody
Calculated Mw	36 kDa
Cellular Localization	Cell membrane; Multi-pass membrane protein.

Images



ARG55379 anti-Melanocortin 3 Receptor antibody WB image

Western blot: 35 µg of K562 cell lysate stained with ARG55379 anti-Melanocortin 3 Receptor antibody.



ARG55379 anti-Melanocortin 3 Receptor antibody FACS image

Flow Cytometry: K562 cells stained with ARG55379 anti-Melanocortin 3 Receptor antibody (right histogram) or without primary antibody control (left histogram), followed by incubation with FITC labelled secondary antibody.