

## ARG55309 anti-alpha 1/2 Catenin antibody

Package: 50 µl  
Store at: -20°C

### Summary

Product Description	Rabbit Polyclonal antibody recognizes alpha 1/2 Catenin
Tested Reactivity	Hu, Ms, Rat
Tested Application	IHC-P, IP, WB
Host	Rabbit
Clonality	Polyclonal
Isotype	IgG
Target Name	alpha 1/2 Catenin
Species	Human
Immunogen	Recombinant fusion protein corresponding to aa. 637-906 of Human alpha 1 Catenin (NP_001894.2).
Conjugation	Un-conjugated
Alternate Names	Catenin alpha-1; Renal carcinoma antigen NY-REN-13; Cadherin-associated protein; CAP102; Alpha E-catenin; CAPR; CTNR; CAP-R; CT114

### Application Instructions

Application table	Application	Dilution
	IHC-P	1:50 - 1:200
	IP	1:50 - 1:100
	WB	1:500 - 1:2000
Application Note	* The dilutions indicate recommended starting dilutions and the optimal dilutions or concentrations should be determined by the scientist.	
Positive Control	293T and Mouse heart	

### Properties

Form	Liquid
Purification	Affinity purification with immunogen.
Buffer	PBS (pH 7.3), 0.02% Sodium azide and 50% Glycerol
Preservative	0.02% Sodium azide
Stabilizer	50% Glycerol
Storage instruction	For continuous use, store undiluted antibody at 2-8°C for up to a week. For long-term storage, aliquot and store at -20°C. Storage in frost free freezers is not recommended. Avoid repeated freeze/thaw cycles. Suggest spin the vial prior to opening. The antibody solution should be gently mixed before use.
Note	For laboratory research only, not for drug, diagnostic or other use.

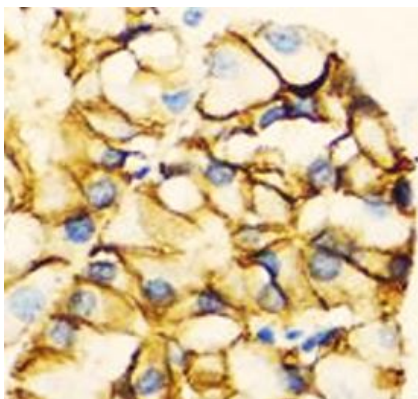
## Bioinformation

---

Database links	<a href="#">GeneID: 12385 Mouse</a> <a href="#">GeneID: 1495 Human</a> <a href="#">Swiss-port # P26231 Mouse</a> <a href="#">Swiss-port # P35221 Human</a>
Gene Symbol	CTNNA1, CTNNA2
Gene Full Name	catenin alpha 1, catenin alpha 2
Background	This gene encodes a member of the catenin family of proteins that play an important role in cell adhesion process by connecting cadherins located on the plasma membrane to the actin filaments inside the cell. The encoded mechanosensing protein contains three vinculin homology domains and undergoes conformational changes in response to cytoskeletal tension, resulting in the reconfiguration of cadherin-actin filament connections. Certain mutations in this gene cause butterfly-shaped pigment dystrophy. [provided by RefSeq, May 2016]
Function	Associates with the cytoplasmic domain of a variety of cadherins. The association of catenins to cadherins produces a complex which is linked to the actin filament network, and which seems to be of primary importance for cadherins cell-adhesion properties. Can associate with both E- and N-cadherins. Originally believed to be a stable component of E-cadherin/catenin adhesion complexes and to mediate the linkage of cadherins to the actin cytoskeleton at adherens junctions. In contrast, cortical actin was found to be much more dynamic than E-cadherin/catenin complexes and CTNNA1 was shown not to bind to F-actin when assembled in the complex suggesting a different linkage between actin and adherens junctions components. The homodimeric form may regulate actin filament assembly and inhibit actin branching by competing with the Arp2/3 complex for binding to actin filaments. May play a crucial role in cell differentiation. [UniProt]
Research Area	Cancer antibody; Developmental Biology antibody; Signaling Transduction antibody
Calculated Mw	100 kDa
PTM	Sumoylated. Phosphorylation seems to contribute to the strength of cell-cell adhesion rather than to the basic capacity for cell-cell adhesion.

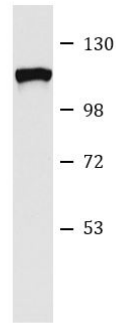
## Images

---



ARG55309 anti-alpha 1/2 Catenin antibody IHC-P image

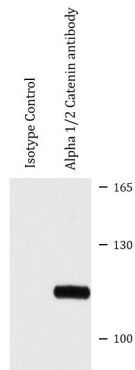
Immunohistochemistry: Paraffin-embedded Human stomach stained with ARG55309 anti-alpha 1/2 Catenin antibody at 1:100 dilution.



293T

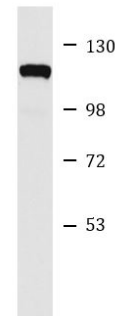
#### ARG55309 anti-alpha 1/2 Catenin antibody WB image

Western blot: 25  $\mu$ g of 293T cell lysate stained with ARG55309 anti-alpha 1/2 Catenin antibody at 1:1000 dilution.



#### ARG55309 anti-alpha 1/2 Catenin antibody IP image

Immunoprecipitation: 200  $\mu$ g extracts of 293T cells were immunoprecipitated and stained with ARG55309 anti-alpha 1/2 Catenin antibody at 1:500 dilution.



Mouse heart

#### ARG55309 anti-alpha 1/2 Catenin antibody WB image

Western blot: 25  $\mu$ g of Mouse heart lysate stained with ARG55309 anti-alpha 1/2 Catenin antibody at 1:1000 dilution.