

## ARG55305 anti-CPT1B antibody

Package: 100 µl  
Store at: -20°C

### Summary

Product Description	Rabbit Polyclonal antibody recognizes CPT1B
Tested Reactivity	Hu, Ms, Rat
Tested Application	IHC-P, WB
Host	Rabbit
Clonality	Polyclonal
Isotype	IgG
Target Name	CPT1B
Species	Human
Immunogen	Recombinant protein of Human CPT1B
Conjugation	Un-conjugated
Alternate Names	CPT1-M; Carnitine O-palmitoyltransferase 1, muscle isoform; CPT1M; Carnitine palmitoyltransferase I-like protein; CPTI; Carnitine palmitoyltransferase 1B; Carnitine O-palmitoyltransferase I, muscle isoform; MCPT1; CPTI-M; M-CPT1; EC 2.3.1.21; CPT I; MCCPT1

### Application Instructions

Application table	Application	Dilution
	IHC-P	1:50 - 1:200
	WB	1:500 - 1:2000
Application Note	* The dilutions indicate recommended starting dilutions and the optimal dilutions or concentrations should be determined by the scientist.	
Positive Control	Mouse heart	

### Properties

Form	Liquid
Purification	Affinity purification with immunogen.
Buffer	PBS (pH 7.3), 0.02% Sodium azide and 50% Glycerol
Preservative	0.02% Sodium azide
Stabilizer	50% Glycerol
Storage instruction	For continuous use, store undiluted antibody at 2-8°C for up to a week. For long-term storage, aliquot and store at -20°C. Storage in frost free freezers is not recommended. Avoid repeated freeze/thaw cycles. Suggest spin the vial prior to opening. The antibody solution should be gently mixed before use.
Note	For laboratory research only, not for drug, diagnostic or other use.

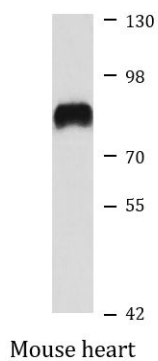
## Bioinformation

---

Database links	<a href="#">GeneID: 12895 Mouse</a> <a href="#">GeneID: 1375 Human</a> <a href="#">Swiss-port # Q924X2 Mouse</a> <a href="#">Swiss-port # Q92523 Human</a>
Gene Symbol	CPT1B
Gene Full Name	carnitine palmitoyltransferase 1B (muscle)
Background	The protein encoded by this gene, a member of the carnitine/choline acetyltransferase family, is the rate-controlling enzyme of the long-chain fatty acid beta-oxidation pathway in muscle mitochondria. This enzyme is required for the net transport of long-chain fatty acyl-CoAs from the cytoplasm into the mitochondria. Multiple transcript variants encoding different isoforms have been found for this gene, and read-through transcripts are expressed from the upstream locus that include exons from this gene. [provided by RefSeq, Jun 2009]
Research Area	Cancer antibody; Cell Biology and Cellular Response antibody; Metabolism antibody; Signaling Transduction antibody
Calculated Mw	88 kDa

## Images

---



ARG55305 anti-CPT1B antibody WB image

Western blot: Mouse heart lysate stained with ARG55305 anti-CPT1B antibody.