

ARG55223 anti-CYC1 antibody

Package: 100 µl
Store at: -20°C

Summary

Product Description	Rabbit Polyclonal antibody recognizes CYC1
Tested Reactivity	Hu
Predict Reactivity	Ms
Tested Application	FACS, IHC-P, WB
Host	Rabbit
Clonality	Polyclonal
Isotype	IgG
Target Name	CYC1
Species	Human
Immunogen	KLH-conjugated synthetic peptide corresponding to aa. 259-287 (C-terminus) of Human CYC1.
Conjugation	Un-conjugated
Alternate Names	Cytochrome c1, heme protein, mitochondrial; UQCR4; Cytochrome b-c1 complex subunit 4; Complex III subunit 4; Complex III subunit IV; Cytochrome c-1; Ubiquinol-cytochrome-c reductase complex cytochrome c1 subunit; MC3DN6

Application Instructions

Application table	Application	Dilution
	FACS	1:10 - 1:50
	IHC-P	Assay-dependent
	WB	1:1000
Application Note	* The dilutions indicate recommended starting dilutions and the optimal dilutions or concentrations should be determined by the scientist.	
Positive Control	HeLa	

Properties

Form	Liquid
Purification	Purification with Protein A and immunogen peptide.
Buffer	PBS and 0.09% (W/V) Sodium azide
Preservative	0.09% (W/V) Sodium azide
Storage instruction	For continuous use, store undiluted antibody at 2-8°C for up to a week. For long-term storage, aliquot and store at -20°C or below. Storage in frost free freezers is not recommended. Avoid repeated freeze/thaw cycles. Suggest spin the vial prior to opening. The antibody solution should be gently mixed before use.

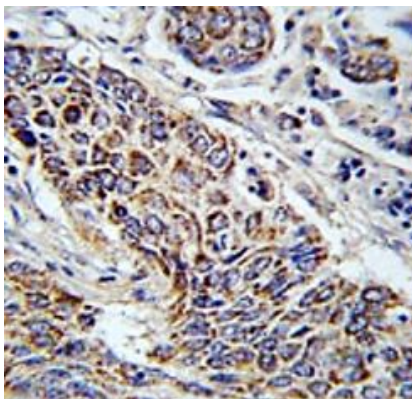
Note

For laboratory research only, not for drug, diagnostic or other use.

Bioinformation

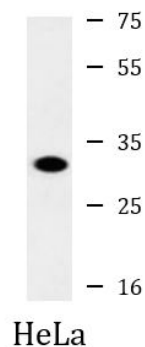
Database links	GeneID: 1537 Human Swiss-port # P08574 Human
Gene Symbol	CYC1
Gene Full Name	cytochrome c-1
Background	This gene encodes a subunit of the cytochrome bc1 complex, which plays an important role in the mitochondrial respiratory chain by transferring electrons from the Rieske iron-sulfur protein to cytochrome c. Mutations in this gene may cause mitochondrial complex III deficiency, nuclear type 6. [provided by RefSeq, Dec 2013]
Function	This is the heme-containing component of the cytochrome b-c1 complex, which accepts electrons from Rieske protein and transfers electrons to cytochrome c in the mitochondrial respiratory chain. [UniProt]
Research Area	Controls and Markers antibody; Metabolism antibody; Signaling Transduction antibody
Calculated Mw	35 kDa
PTM	Binds 1 heme group per subunit.
Cellular Localization	Mitochondrion inner membrane; Single-pass membrane protein; Intermembrane side

Images



ARG55223 anti-CYC1 antibody IHC-P image

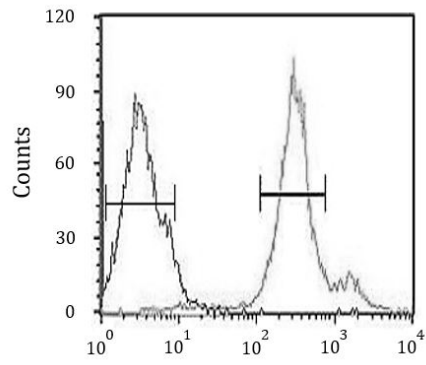
Immunohistochemistry: Formalin-fixed and paraffin-embedded Human lung carcinoma stained with ARG55223 anti-CYC1 antibody.



ARG55223 anti-CYC1 antibody WB image

Western blot: 35 µg of HeLa cell lysate stained with ARG55223 anti-CYC1 antibody.

ARG55223 anti-CYC1 antibody FACS image



Flow Cytometry: HeLa cells stained with ARG55223 anti-CYC1 antibody (right histogram) or without primary antibody control (left histogram), followed by incubation with FITC labelled secondary antibody.