

**ARG55218**  
anti-Complexin 1 antibodyPackage: 100 µl  
Store at: -20°C

### Summary

Product Description	Rabbit Polyclonal antibody recognizes Complexin 1
Tested Reactivity	Ms
Predict Reactivity	Bov, Rat
Tested Application	WB
Host	Rabbit
Clonality	Polyclonal
Isotype	IgG
Target Name	Complexin 1
Species	Human
Immunogen	KLH-conjugated synthetic peptide corresponding to aa. 51-83 (Center) of Human Complexin 1.
Conjugation	Un-conjugated
Alternate Names	921-L; Complexin-2; Synaphin-1; CPX II; CPX-2; CPX2; Complexin II; Hfb1

### Application Instructions

Application table	Application	Dilution
	WB	1:1000
Application Note	* The dilutions indicate recommended starting dilutions and the optimal dilutions or concentrations should be determined by the scientist.	
Positive Control	Mouse brain	

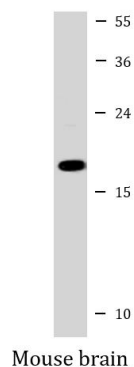
### Properties

Form	Liquid
Purification	Purification with Protein A and immunogen peptide.
Buffer	PBS and 0.09% (W/V) Sodium azide
Preservative	0.09% (W/V) Sodium azide
Storage instruction	For continuous use, store undiluted antibody at 2-8°C for up to a week. For long-term storage, aliquot and store at -20°C or below. Storage in frost free freezers is not recommended. Avoid repeated freeze/thaw cycles. Suggest spin the vial prior to opening. The antibody solution should be gently mixed before use.
Note	For laboratory research only, not for drug, diagnostic or other use.

### Bioinformation

Database links	<a href="#">GeneID: 12890 Mouse</a> <a href="#">Swiss-port # P84086 Mouse</a>
Gene Symbol	CPLX2
Gene Full Name	complexin 2
Background	Proteins encoded by the complexin/synaphin gene family are cytosolic proteins that function in synaptic vesicle exocytosis. These proteins bind syntaxin, part of the SNAP receptor. The protein product of this gene binds to the SNAP receptor complex and disrupts it, allowing transmitter release. Two transcript variants encoding the same protein have been found for this gene. [provided by RefSeq, Jul 2008]
Function	Negatively regulates the formation of synaptic vesicle clustering at active zone to the presynaptic membrane in postmitotic neurons. Positively regulates a late step in synaptic vesicle exocytosis. Also involved in mast cell exocytosis (By similarity). [UniProt]
Research Area	Cell Biology>Cell Cycle>Cell Cycle Inhibitors>Cip / Kip> antibody; Signal Transduction>Cytoskeleton / ECM>Cytoskeleton>Microfilaments>Actin etc>Actin Assembly> antibody; Signal Transduction>Signaling Pathway>G Protein Signaling>Heterotrimeric G Proteins>G Proteins> antibody; Epigenetics and Nuclear Signaling>Cell cycle>Cell Cycle Inhibitors>Cip/Kip> antibody; Cancer>Cell cycle>Cell cycle inhibitors>Cip/kip> antibody
Calculated Mw	15 kDa
Cellular Localization	Cytoplasm, cytosol. Note=Enriched at synaptic-releasing sites in mature neurons.

## Images



ARG55218 anti-Complexin 1 antibody WB image

Western blot: 35 µg of Mouse brain lysate stained with ARG55218 anti-Complexin 1 antibody at 1:1000 dilution.