

## ARG55160 anti-ARP2 antibody

Package: 100 µl  
Store at: -20°C

### Summary

Product Description	Rabbit Polyclonal antibody recognizes ARP2
Tested Reactivity	Hu
Predict Reactivity	Ms, Rat, Bov, Chk, Xenopus
Tested Application	FACS, IHC-P, WB
Host	Rabbit
Clonality	Polyclonal
Isotype	IgG
Target Name	ARP2
Species	Human
Immunogen	KLH-conjugated synthetic peptide corresponding to aa. 191-219 (Center) of Human ARP2.
Conjugation	Un-conjugated
Alternate Names	Actin-related protein 2; Actin-like protein 2; ARP2

### Application Instructions

Application table	Application	Dilution
	FACS	1:10 - 1:50
	IHC-P	Assay-dependent
	WB	1:1000
Application Note	* The dilutions indicate recommended starting dilutions and the optimal dilutions or concentrations should be determined by the scientist.	
Positive Control	HeLa	

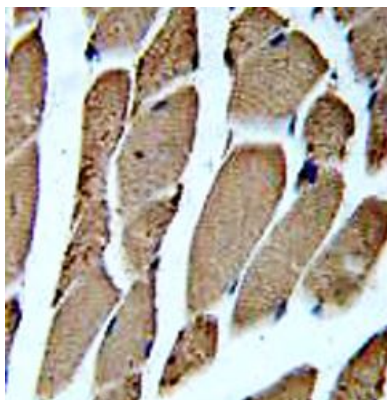
### Properties

Form	Liquid
Purification	Saturated Ammonium Sulfate (SAS) precipitation followed by dialysis against PBS.
Buffer	PBS and 0.09% (W/V) Sodium azide
Preservative	0.09% (W/V) Sodium azide
Storage instruction	For continuous use, store undiluted antibody at 2-8°C for up to a week. For long-term storage, aliquot and store at -20°C or below. Storage in frost free freezers is not recommended. Avoid repeated freeze/thaw cycles. Suggest spin the vial prior to opening. The antibody solution should be gently mixed before use.
Note	For laboratory research only, not for drug, diagnostic or other use.

## Bioinformation

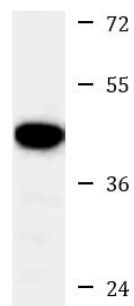
Database links	<a href="#">GeneID: 10097 Human</a> <a href="#">Swiss-port # P61160 Human</a>
Gene Symbol	ACTR2
Gene Full Name	ARP2 actin-related protein 2 homolog (yeast)
Background	The specific function of this gene has not yet been determined; however, the protein it encodes is known to be a major constituent of the ARP2/3 complex. This complex is located at the cell surface and is essential to cell shape and motility through lamellipodial actin assembly and protrusion. Two transcript variants encoding different isoforms have been found for this gene. [provided by RefSeq, Jul 2008]
Function	Functions as ATP-binding component of the Arp2/3 complex which is involved in regulation of actin polymerization and together with an activating nucleation-promoting factor (NPF) mediates the formation of branched actin networks. Seems to contact the pointed end of the daughter actin filament. [UniProt]
Research Area	Cancer antibody; Signaling Transduction antibody
Calculated Mw	45 kDa
Cellular Localization	Cytoplasm, cytoskeleton. Cell projection

## Images



ARG55160 anti-ARP2 antibody IHC-P image

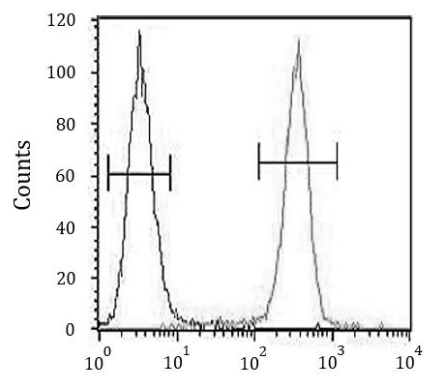
Immunohistochemistry: Formalin-fixed and paraffin-embedded Human skeletal muscle stained with ARG55160 anti-ARP2 antibody.



HeLa

ARG55160 anti-ARP2 antibody WB image

Western blot: 35 µg of HeLa cell lysate stained with ARG55160 anti-ARP2 antibody.



#### ARG55160 anti-ARP2 antibody FACS image

Flow Cytometry: A375 cells stained with ARG55160 anti-ARP2 antibody (right histogram) or without primary antibody control (left histogram), followed by incubation with FITC labelled secondary antibody.