

ARG55151 anti-APAP1 antibody

Package: 100 µl
Store at: -20°C

Summary

Product Description	Rabbit Polyclonal antibody recognizes APAP1
Tested Reactivity	Hu
Tested Application	WB
Host	Rabbit
Clonality	Polyclonal
Isotype	IgG
Target Name	APAP1
Species	Human
Immunogen	KLH-conjugated synthetic peptide corresponding to aa. 444-477 of Human APAP1.
Conjugation	Un-conjugated
Alternate Names	110 kDa actin filament-associated protein; AFAP110; AFAP-110; AFAP; Actin filament-associated protein 1

Application Instructions

Application table	Application	Dilution
	WB	1:1000
Application Note	* The dilutions indicate recommended starting dilutions and the optimal dilutions or concentrations should be determined by the scientist.	
Positive Control	HeLa	

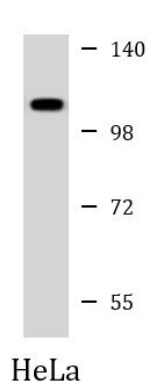
Properties

Form	Liquid
Purification	Purification with Protein A and immunogen peptide.
Buffer	PBS and 0.09% (W/V) Sodium azide
Preservative	0.09% (W/V) Sodium azide
Storage instruction	For continuous use, store undiluted antibody at 2-8°C for up to a week. For long-term storage, aliquot and store at -20°C or below. Storage in frost free freezers is not recommended. Avoid repeated freeze/thaw cycles. Suggest spin the vial prior to opening. The antibody solution should be gently mixed before use.
Note	For laboratory research only, not for drug, diagnostic or other use.

Bioinformation

Database links	GeneID: 60312 Human Swiss-port # Q8N556 Human
Gene Symbol	AFAP1
Gene Full Name	actin filament associated protein 1
Background	The protein encoded by this gene is a Src binding partner. It may represent a potential modulator of actin filament integrity in response to cellular signals, and may function as an adaptor protein by linking Src family members and/or other signaling proteins to actin filaments. Multiple transcript variants encoding different isoforms have been found for this gene. [provided by RefSeq, Aug 2008]
Function	Can cross-link actin filaments into both network and bundle structures (By similarity). May modulate changes in actin filament integrity and induce lamellipodia formation. May function as an adapter molecule that links other proteins, such as SRC and PKC to the actin cytoskeleton. Seems to play a role in the development and progression of prostate adenocarcinoma by regulating cell-matrix adhesions and migration in the cancer cells. [UniProt]
Research Area	Signaling Transduction antibody
Calculated Mw	81 kDa
PTM	Phosphorylated on tyrosine residues by SRC.
Cellular Localization	Cytoplasm, cytoskeleton. Note=Localizes with stress fibers in quiescent cells, concentrated in cell motility structures such as lamellipodia, filopodia and membrane ruffles upon their induction

Images



ARG55151 anti-APAP1 antibody WB image

Western blot: 35 µg of HeLa cell lysate stained with ARG55151 anti-APAP1 antibody at 1:1000 dilution.