

ARG55143 anti-AMMECR1 antibody

Package: 100 µl
Store at: -20°C

Summary

Product Description	Rabbit Polyclonal antibody recognizes AMMECR1
Tested Reactivity	Hu
Predict Reactivity	Ms
Tested Application	WB
Host	Rabbit
Clonality	Polyclonal
Isotype	IgG
Target Name	AMMECR1
Species	Human
Immunogen	KLH-conjugated synthetic peptide corresponding to aa. 271-298 (C-terminus) of Human AMMECR1.
Conjugation	Un-conjugated
Alternate Names	AMMERC1; AMME syndrome candidate gene 1 protein

Application Instructions

Application table	Application	Dilution
	WB	1:1000
Application Note	* The dilutions indicate recommended starting dilutions and the optimal dilutions or concentrations should be determined by the scientist.	
Positive Control	WiDr	

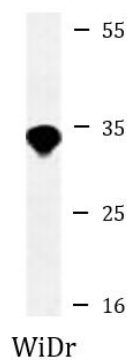
Properties

Form	Liquid
Purification	Purification with Protein A and immunogen peptide.
Buffer	PBS and 0.09% (W/V) Sodium azide
Preservative	0.09% (W/V) Sodium azide
Storage instruction	For continuous use, store undiluted antibody at 2-8°C for up to a week. For long-term storage, aliquot and store at -20°C or below. Storage in frost free freezers is not recommended. Avoid repeated freeze/thaw cycles. Suggest spin the vial prior to opening. The antibody solution should be gently mixed before use.
Note	For laboratory research only, not for drug, diagnostic or other use.

Bioinformation

Database links	GeneID: 9949 Human Swiss-port # Q9Y4X0 Human
Gene Symbol	AMMECR1
Gene Full Name	Alport syndrome, mental retardation, midface hypoplasia and elliptocytosis chromosomal region gene 1
Background	The exact function of this gene is not known, however, submicroscopic deletion of the X chromosome including this gene, COL4A5, and FAHL4 genes, result in a contiguous gene deletion syndrome, the AMME complex (Alport syndrome, mental retardation, midface hypoplasia, and elliptocytosis). Alternatively spliced transcript variants encoding different isoforms have been found for this gene. [provided by RefSeq, Jan 2010]
Research Area	Cell Biology and Cellular Response antibody
Calculated Mw	35 kDa

Images



ARG55143 anti-AMMECR1 antibody WB image

Western blot: 35 µg of WiDr cell lysate stained with ARG55143 anti-AMMECR1 antibody.