

## ARG55142 anti-CD107a / LAMP1 antibody

Package: 100 µl  
Store at: -20°C

### Summary

Product Description	Rabbit Polyclonal antibody recognizes CD107a / LAMP1
Tested Reactivity	Hu, Ms
Tested Application	ICC/IF, IHC-P, WB
Host	Rabbit
Clonality	Polyclonal
Isotype	IgG
Target Name	CD107a / LAMP1
Species	Human
Immunogen	KLH-conjugated synthetic peptide corresponding to aa. 125-154 (N-terminus) of Human LAMP1.
Conjugation	Un-conjugated
Alternate Names	LGP120; CD107a; LAMPA; CD antigen CD107a; Lysosome-associated membrane glycoprotein 1; CD107 antigen-like family member A; LAMP-1; Lysosome-associated membrane protein 1

### Application Instructions

Application table	Application	Dilution
	ICC/IF	1:200
	IHC-P	Assay-dependent
	WB	1:1000
Application Note	* The dilutions indicate recommended starting dilutions and the optimal dilutions or concentrations should be determined by the scientist.	
Positive Control	Human placenta	

### Properties

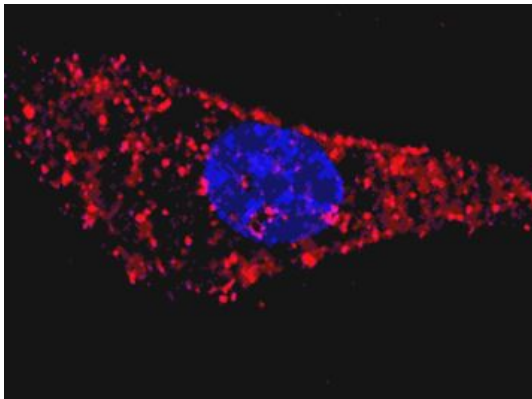
Form	Liquid
Purification	Purification with Protein A and immunogen peptide.
Buffer	PBS and 0.09% (W/V) Sodium azide
Preservative	0.09% (W/V) Sodium azide
Storage instruction	For continuous use, store undiluted antibody at 2-8°C for up to a week. For long-term storage, aliquot and store at -20°C or below. Storage in frost free freezers is not recommended. Avoid repeated freeze/thaw cycles. Suggest spin the vial prior to opening. The antibody solution should be gently mixed before use.
Note	For laboratory research only, not for drug, diagnostic or other use.

## Bioinformation

---

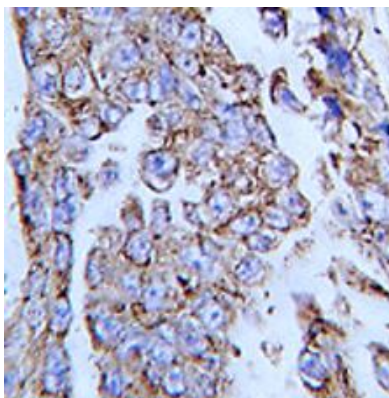
Database links	<a href="#">GeneID: 16783 Mouse</a> <a href="#">GeneID: 3916 Human</a> <a href="#">Swiss-port # P11279 Human</a> <a href="#">Swiss-port # P11438 Mouse</a>
Gene Symbol	LAMP1
Gene Full Name	lysosomal-associated membrane protein 1
Background	The protein encoded by this gene is a member of a family of membrane glycoproteins. This glycoprotein provides selectins with carbohydrate ligands. It may also play a role in tumor cell metastasis. [provided by RefSeq, Jul 2008]
Function	Presents carbohydrate ligands to selectins. Also implicated in tumor cell metastasis. [UniProt]
Research Area	Cancer antibody; Cell Death antibody; Controls and Markers antibody; Developmental Biology antibody; Metabolism antibody; Neuroscience antibody; Signaling Transduction antibody; Lysosome Marker antibody
Calculated Mw	45 kDa
PTM	O- and N-glycosylated; some of the 18 N-linked glycans are polylactosaminoglycans. The glycosylation of N-76 is essential for Lassa virus entry into cells.
Cellular Localization	Cell membrane; Single-pass type I membrane protein. Endosome membrane; Single-pass type I membrane protein Lysosome membrane; Single-pass type I membrane protein. Late endosome. Note=This protein shuttles between lysosomes, endosomes, and the plasma membrane. Colocalizes with OSBPL1A at the late endosome

## Images



ARG55142 anti-CD107a / LAMP1 antibody ICC/IF image

Immunofluorescence: U251 cells were treated with Chloroquine (50  $\mu$ M, 16 hours), then fixed with 4% PFA (20 min), permeabilized with Triton X-100 (0.2%, 30 min). Cells were then stained with ARG55142 anti-CD107a / LAMP1 antibody (red) at 1:200 dilution, 2 hours at room temperature. Nuclei were counterstained with Hoechst 33342 (blue) (10  $\mu$ g/ml, 5 min).



ARG55142 anti-CD107a / LAMP1 antibody IHC-P image

Immunohistochemistry: Formalin-fixed and paraffin-embedded Human lung carcinoma tissue stained with ARG55142 anti-CD107a / LAMP1 antibody.

ARG55142 anti-CD107a / LAMP1 antibody WB image

Western blot: 35 µg of Human placenta lysate stained with ARG55142 anti-CD107a / LAMP1 antibody at 1:1000 dilution.

