

ARG55140 anti-APRG1 antibody

Package: 100 µl
Store at: -20°C

Summary

| | |
|---------------------|--|
| Product Description | Rabbit Polyclonal antibody recognizes APRG1 |
| Tested Reactivity | Hu |
| Tested Application | WB |
| Host | Rabbit |
| Clonality | Polyclonal |
| Isotype | IgG |
| Target Name | APRG1 |
| Species | Human |
| Immunogen | KLH-conjugated synthetic peptide corresponding to aa. 59-88 (Center) of Human APRG1. |
| Conjugation | Un-conjugated |
| Alternate Names | AP20 region protein 1; APRG1 |

Application Instructions

| | | |
|-------------------|--|----------|
| Application table | Application | Dilution |
| | WB | 1:1000 |
| Application Note | * The dilutions indicate recommended starting dilutions and the optimal dilutions or concentrations should be determined by the scientist. | |
| Positive Control | HL-60 | |

Properties

| | |
|---------------------|--|
| Form | Liquid |
| Purification | Purification with Protein A and immunogen peptide. |
| Buffer | PBS and 0.09% (W/V) Sodium azide |
| Preservative | 0.09% (W/V) Sodium azide |
| Storage instruction | For continuous use, store undiluted antibody at 2-8°C for up to a week. For long-term storage, aliquot and store at -20°C or below. Storage in frost free freezers is not recommended. Avoid repeated freeze/thaw cycles. Suggest spin the vial prior to opening. The antibody solution should be gently mixed before use. |
| Note | For laboratory research only, not for drug, diagnostic or other use. |

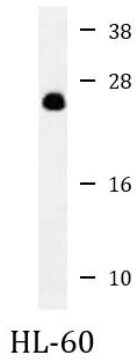
Bioinformation

| | |
|----------------|--------------------------------------|
| Database links | GeneID: 339883 Human |
|----------------|--------------------------------------|

[Swiss-port # Q8IVJ8 Human](#)

| | |
|-----------------------|--|
| Gene Symbol | C3orf35 |
| Gene Full Name | chromosome 3 open reading frame 35 |
| Research Area | Cancer antibody |
| Calculated Mw | 19 kDa |
| Cellular Localization | Membrane; Single-pass membrane protein |

Images



ARG55140 anti-APRG1 antibody WB image

Western blot: 35 μ g of HL-60 cell lysate stained with ARG55140 anti-APRG1 antibody.