

ARG55078 anti-CDCA7L antibody

Package: 100 µl
Store at: -20°C

Summary

Product Description	Rabbit Polyclonal antibody recognizes CDCA7L
Tested Reactivity	Hu
Tested Application	WB
Host	Rabbit
Clonality	Polyclonal
Isotype	IgG
Target Name	CDCA7L
Species	Human
Immunogen	KLH-conjugated synthetic peptide corresponding to aa. 290-317 (C-terminus) of Human CDCA7L.
Conjugation	Un-conjugated
Alternate Names	R1; Cell division cycle-associated 7-like protein; RAM2; Transcription factor RAM2; Protein JPO2; JPO2

Application Instructions

Application table	Application	Dilution
	WB	1:1000
Application Note	* The dilutions indicate recommended starting dilutions and the optimal dilutions or concentrations should be determined by the scientist.	
Positive Control	293	

Properties

Form	Liquid
Purification	Purification with Protein A and immunogen peptide.
Buffer	PBS and 0.09% (W/V) Sodium azide
Preservative	0.09% (W/V) Sodium azide
Storage instruction	For continuous use, store undiluted antibody at 2-8°C for up to a week. For long-term storage, aliquot and store at -20°C or below. Storage in frost free freezers is not recommended. Avoid repeated freeze/thaw cycles. Suggest spin the vial prior to opening. The antibody solution should be gently mixed before use.
Note	For laboratory research only, not for drug, diagnostic or other use.

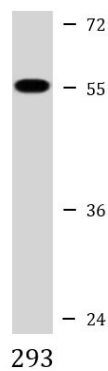
Bioinformation

Database links	GeneID: 55536 Human
----------------	-------------------------------------

[Swiss-port # Q96GN5 Human](#)

Gene Symbol	CDCA7L
Gene Full Name	cell division cycle associated 7-like
Function	Plays a role in transcriptional regulation as a repressor that inhibits monoamine oxidase A (MAOA) activity and gene expression by binding to the promoter. Plays an important oncogenic role in mediating the full transforming effect of MYC in medulloblastoma cells. Involved in apoptotic signaling pathways; May act downstream of P38-kinase and BCL-2, but upstream of CASP3/caspase-3 as well as CCND1/cyclin D1 and E2F1. [UniProt]
Research Area	Cancer antibody; Cell Biology and Cellular Response antibody; Cell Death antibody; Gene Regulation antibody
Calculated Mw	52 kDa

Images



ARG55078 anti-CDCA7L antibody WB image

Western blot: 35 µg of 293 cell lysate stained with ARG55078 anti-CDCA7L antibody.