

## ARG55073 anti-Cyclin B2 antibody

Package: 100 µl  
Store at: -20°C

### Summary

Product Description	Rabbit Polyclonal antibody recognizes Cyclin B2
Tested Reactivity	Hu
Predict Reactivity	Mk
Tested Application	WB
Host	Rabbit
Clonality	Polyclonal
Isotype	IgG
Target Name	Cyclin B2
Species	Human
Immunogen	KLH-conjugated synthetic peptide corresponding to aa. 182-209 (Center) of Human Cyclin B2.
Conjugation	Un-conjugated
Alternate Names	HsT17299; G2/mitotic-specific cyclin-B2

### Application Instructions

Application table	Application	Dilution
	WB	1:1000
Application Note	* The dilutions indicate recommended starting dilutions and the optimal dilutions or concentrations should be determined by the scientist.	
Positive Control	U251	

### Properties

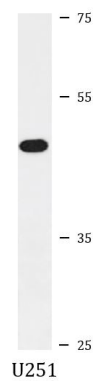
Form	Liquid
Purification	Purification with Protein A and immunogen peptide.
Buffer	PBS and 0.09% (W/V) Sodium azide
Preservative	0.09% (W/V) Sodium azide
Storage instruction	For continuous use, store undiluted antibody at 2-8°C for up to a week. For long-term storage, aliquot and store at -20°C or below. Storage in frost free freezers is not recommended. Avoid repeated freeze/thaw cycles. Suggest spin the vial prior to opening. The antibody solution should be gently mixed before use.
Note	For laboratory research only, not for drug, diagnostic or other use.

### Bioinformation

Database links	<a href="#">GeneID: 9133 Human</a> <a href="#">Swiss-port # O95067 Human</a>
Gene Symbol	CCNB2
Gene Full Name	cyclin B2
Background	Cyclin B2 is a member of the cyclin family, specifically the B-type cyclins. The B-type cyclins, B1 and B2, associate with p34cdc2 and are essential components of the cell cycle regulatory machinery. B1 and B2 differ in their subcellular localization. Cyclin B1 co-localizes with microtubules, whereas cyclin B2 is primarily associated with the Golgi region. Cyclin B2 also binds to transforming growth factor beta RII and thus cyclin B2/cdc2 may play a key role in transforming growth factor beta-mediated cell cycle control. [provided by RefSeq, Jul 2008]
Function	Essential for the control of the cell cycle at the G2/M (mitosis) transition. [UniProt]
Research Area	Cell Biology and Cellular Response antibody; Gene Regulation antibody
Calculated Mw	45 kDa

## Images

---



ARG55073 anti-Cyclin B2 antibody WB image

Western blot: 35 µg of U251 cell lysate stained with ARG55073 anti-Cyclin B2 antibody.