

ARG55071 anti-CEP112 / CCDC46 antibody

Package: 100 µl
Store at: -20°C

Summary

Product Description	Rabbit Polyclonal antibody recognizes CEP112 / CCDC46
Tested Reactivity	Hu
Tested Application	WB
Host	Rabbit
Clonality	Polyclonal
Isotype	IgG
Target Name	CEP112 / CCDC46
Species	Human
Immunogen	KLH-conjugated synthetic peptide corresponding to aa. 286-314 (N-terminus) of Human CCDC46.
Conjugation	Un-conjugated
Alternate Names	CCDC46; MACOCO; Coiled-coil domain-containing protein 46; Cep112; Centrosomal protein of 112 kDa

Application Instructions

Application table	Application	Dilution
	WB	1:1000
Application Note	* The dilutions indicate recommended starting dilutions and the optimal dilutions or concentrations should be determined by the scientist.	
Positive Control	A2058	

Properties

Form	Liquid
Purification	Purification with Protein A and immunogen peptide.
Buffer	PBS and 0.09% (W/V) Sodium azide
Preservative	0.09% (W/V) Sodium azide
Storage instruction	For continuous use, store undiluted antibody at 2-8°C for up to a week. For long-term storage, aliquot and store at -20°C or below. Storage in frost free freezers is not recommended. Avoid repeated freeze/thaw cycles. Suggest spin the vial prior to opening. The antibody solution should be gently mixed before use.
Note	For laboratory research only, not for drug, diagnostic or other use.

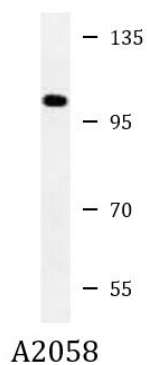
Bioinformation

Database links	GeneID: 201134 Human
----------------	--------------------------------------

[Swiss-port # Q8N8E3 Human](#)

Gene Symbol	CEP112
Gene Full Name	centrosomal protein 112kDa
Background	This gene encodes a coiled-coil domain containing protein that belongs to the cell division control protein 42 effector protein family. In neurons, it localizes to the cytoplasm of dendrites and is also enriched in the nucleus where it interacts with the RNA polymerase III transcriptional repressor Maf1 to regulate gamma-aminobutyric acid A receptor surface expression. In addition, the protein has been identified as a component of the human centrosome. Alternative splicing results in multiple transcript variants. [provided by RefSeq, Nov 2014]
Research Area	Cell Biology and Cellular Response antibody
Calculated Mw	113 kDa
Cellular Localization	Cytoplasm, cytoskeleton, microtubule organizing center, centrosome. Note=Localizes around spindle poles in some cells.

Images



ARG55071 anti-CEP112 / CCDC46 antibody WB image

Western blot: 35 µg of A2058 cell lysate stained with ARG55071 anti-CEP112 / CCDC46 antibody.