

ARG55017 anti-WDR82 antibody

Package: 100 µl
Store at: -20°C

Summary

Product Description	Rabbit Polyclonal antibody recognizes WDR82
Tested Reactivity	Hu
Predict Reactivity	Ms
Tested Application	ICC/IF, WB
Host	Rabbit
Clonality	Polyclonal
Isotype	IgG
Target Name	WDR82
Species	Human
Immunogen	KLH-conjugated synthetic peptide corresponding to aa. 12-46 (N-terminus) of Human WDR82.
Conjugation	Un-conjugated
Alternate Names	PRO34047; Swd2; Protein TMEM113; WD repeat-containing protein 82; MST107; MSTP107; PRO2730; TMEM113; SWD2; WDR82A

Application Instructions

Application table	Application	Dilution
	ICC/IF	1:25
	WB	1:1000
Application Note	* The dilutions indicate recommended starting dilutions and the optimal dilutions or concentrations should be determined by the scientist.	
Positive Control	SH-SY5Y	

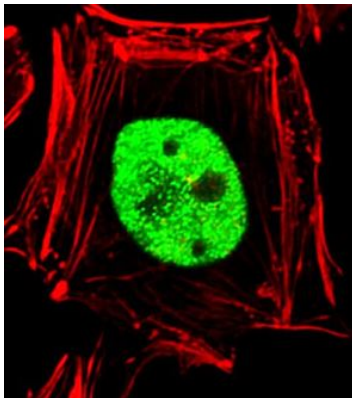
Properties

Form	Liquid
Purification	Purification with Protein A and immunogen peptide.
Buffer	PBS and 0.09% (W/V) Sodium azide
Preservative	0.09% (W/V) Sodium azide
Storage instruction	For continuous use, store undiluted antibody at 2-8°C for up to a week. For long-term storage, aliquot and store at -20°C or below. Storage in frost free freezers is not recommended. Avoid repeated freeze/thaw cycles. Suggest spin the vial prior to opening. The antibody solution should be gently mixed before use.
Note	For laboratory research only, not for drug, diagnostic or other use.

Bioinformation

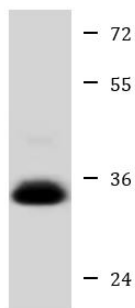
Database links	GeneID: 80335 Human Swiss-port # Q6UXN9 Human
Gene Symbol	WDR82
Gene Full Name	WD repeat domain 82
Background	TMEM113 (WDR82) is a component of the mammalian SET1A (MIM 611052)/SET1B (MIM 611055) histone H3-Lys4 methyltransferase complexes (Lee and Skalnik, 2005 [PubMed 16253997]; Lee et al., 2007 [PubMed 17355966]).[supplied by OMIM, Jul 2010]
Function	Regulatory component of the SET1 complex implicated in the tethering of this complex to transcriptional start sites of active genes. Facilitates histone H3 'Lys-4' methylation via recruitment of the SETD1A or SETD1B to the 'Ser-5' phosphorylated C-terminal domain (CTD) of RNA polymerase II large subunit (POLR2A). Component of PTW/PP1 phosphatase complex, which plays a role in the control of chromatin structure and cell cycle progression during the transition from mitosis into interphase. [UniProt]
Research Area	Gene Regulation antibody
Calculated Mw	35 kDa
Cellular Localization	Nucleus Note=Associates with chromatin

Images



ARG55017 anti-WDR82 antibody ICC/IF image

Immunofluorescence: HeLa cells stained with ARG55017 anti-WDR82 antibody (green) at 1:25 dilution. Cytoplasmic actin was counterstained with Alexa Fluor® 555 conjugated with Phalloidin (red).



SH-SY5Y

ARG55017 anti-WDR82 antibody WB image

Western blot: 20 µg of SH-SY5Y cell lysate stained with ARG55017 anti-WDR82 antibody at 1:1000 dilution.