

ARG55015 anti-WDR5 antibody

Package: 100 µl
Store at: -20°C

Summary

Product Description	Rabbit Polyclonal antibody recognizes WDR5
Tested Reactivity	Hu, Ms
Predict Reactivity	Bov, Rat, Dm
Tested Application	WB
Host	Rabbit
Clonality	Polyclonal
Isotype	IgG
Target Name	WDR5
Species	Human
Immunogen	KLH-conjugated synthetic peptide corresponding to aa. 321-354 (C-terminus) of Human WDR5.
Conjugation	Un-conjugated
Alternate Names	BMP2-induced 3-kb gene protein; WD repeat-containing protein 5; CFAP89; SWD3; BIG-3

Application Instructions

Application table	<table><thead><tr><th>Application</th><th>Dilution</th></tr></thead><tbody><tr><td>WB</td><td>1:1000</td></tr></tbody></table>	Application	Dilution	WB	1:1000
Application	Dilution				
WB	1:1000				
Application Note	* The dilutions indicate recommended starting dilutions and the optimal dilutions or concentrations should be determined by the scientist.				
Positive Control	HeLa				

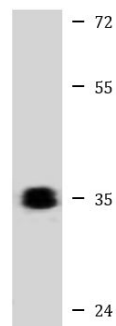
Properties

Form	Liquid
Purification	Purification with Protein A and immunogen peptide.
Buffer	PBS and 0.09% (W/V) Sodium azide
Preservative	0.09% (W/V) Sodium azide
Storage instruction	For continuous use, store undiluted antibody at 2-8°C for up to a week. For long-term storage, aliquot and store at -20°C or below. Storage in frost free freezers is not recommended. Avoid repeated freeze/thaw cycles. Suggest spin the vial prior to opening. The antibody solution should be gently mixed before use.
Note	For laboratory research only, not for drug, diagnostic or other use.

Bioinformation

Database links	GeneID: 11091 Human GeneID: 140858 Mouse Swiss-port # P61964 Human Swiss-port # P61965 Mouse
Gene Symbol	WDR5
Gene Full Name	WD repeat domain 5
Background	This gene encodes a member of the WD repeat protein family. WD repeats are minimally conserved regions of approximately 40 amino acids typically bracketed by gly-his and trp-asp (GH-WD), which may facilitate formation of heterotrimeric or multiprotein complexes. Members of this family are involved in a variety of cellular processes, including cell cycle progression, signal transduction, apoptosis, and gene regulation. This protein contains 7 WD repeats. Alternatively spliced transcript variants encoding the same protein have been identified. [provided by RefSeq, Jul 2008]
Function	Contributes to histone modification. May position the N-terminus of histone H3 for efficient trimethylation at 'Lys-4'. As part of the MLL1/MLL complex it is involved in methylation and dimethylation at 'Lys-4' of histone H3. H3 'Lys-4' methylation represents a specific tag for epigenetic transcriptional activation. As part of the NSL complex it may be involved in acetylation of nucleosomal histone H4 on several lysine residues. May regulate osteoblasts differentiation. [UniProt]
Research Area	Gene Regulation antibody
Calculated Mw	37 kDa
Cellular Localization	Nucleus

Images



HeLa

ARG55015 anti-WDR5 antibody WB image

Western blot: 20 µg of HeLa cell lysate stained with ARG55015 anti-WDR5 antibody at 1:1000 dilution.