

ARG54960 anti-CD38 antibody

Package: 100 µl
Store at: -20°C

Summary

Product Description	Rabbit Polyclonal antibody recognizes CD38
Tested Reactivity	Hu
Predict Reactivity	Mk
Tested Application	FACS, ICC/IF, IHC-P, WB
Host	Rabbit
Clonality	Polyclonal
Isotype	IgG
Target Name	CD38
Species	Human
Immunogen	KLH-conjugated synthetic peptide corresponding to aa. 241-270 (C-terminus) of Human CD38.
Conjugation	Un-conjugated
Alternate Names	cADPr hydrolase 1; ADPRC 1; EC 3.2.2.6; 2'-phospho-ADP-ribosyl cyclase/2'-phospho-cyclic-ADP-ribose transferase; Cyclic ADP-ribose hydrolase 1; ADPRC1; EC 2.4.99.20; ADP-ribosyl cyclase 1; 2'-phospho-cyclic-ADP-ribose transferase; CD antigen CD38; T10; 2'-phospho-ADP-ribosyl cyclase; ADP-ribosyl cyclase/cyclic ADP-ribose hydrolase 1

Application Instructions

Application table	Application	Dilution
	FACS	1:10 - 1:50
	ICC/IF	1:10 - 1:50
	IHC-P	Assay-dependent
	WB	1:1000
Application Note	* The dilutions indicate recommended starting dilutions and the optimal dilutions or concentrations should be determined by the scientist.	
Positive Control	RPMI8226	

Properties

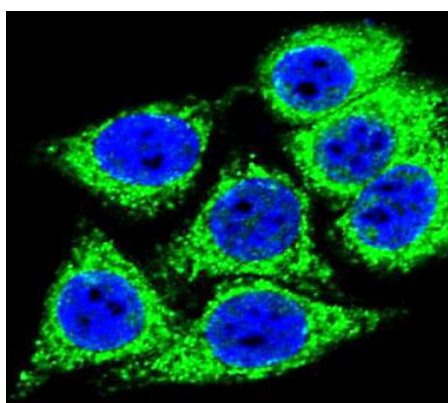
Form	Liquid
Purification	This antibody is prepared by Saturated Ammonium Sulfate (SAS) precipitation followed by dialysis against PBS.
Buffer	PBS and 0.09% (W/V) Sodium azide
Preservative	0.09% (W/V) Sodium azide

Storage instruction	For continuous use, store undiluted antibody at 2-8°C for up to a week. For long-term storage, aliquot and store at -20°C or below. Storage in frost free freezers is not recommended. Avoid repeated freeze/thaw cycles. Suggest spin the vial prior to opening. The antibody solution should be gently mixed before use.
Note	For laboratory research only, not for drug, diagnostic or other use.

Bioinformation

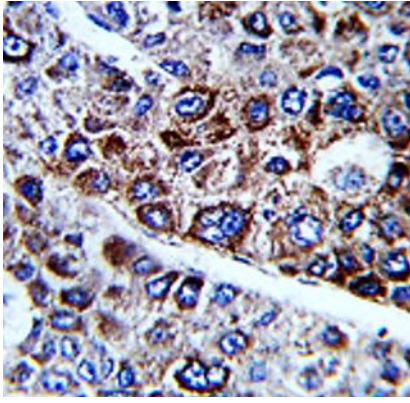
Database links	GeneID: 952 Human Swiss-port # P28907 Human
Gene Symbol	CD38
Gene Full Name	CD38 molecule
Background	CD38 is a novel multifunctional ectoenzyme widely expressed in cells and tissues especially in leukocytes. CD38 also functions in cell adhesion, signal transduction and calcium signaling. [provided by RefSeq, Jul 2008]
Function	Synthesizes the second messengers cyclic ADP-ribose and nicotinate-adenine dinucleotide phosphate, the former a second messenger for glucose-induced insulin secretion. Also has cADPr hydrolase activity. Also moonlights as a receptor in cells of the immune system. [UniProt]
Highlight	Related products: CD38 antibodies ; CD38 Duos / Panels ; Anti-Rabbit IgG secondary antibodies ; Related news: Lymphoma
Research Area	Cancer antibody; Developmental Biology antibody; Immune System antibody; Metabolism antibody; Pro-B Cell Marker antibody; Pre-B Cell Marker antibody
Calculated Mw	34 kDa
Cellular Localization	Membrane; Single-pass type II membrane protein

Images



ARG54960 anti-CD38 antibody ICC/IF image

Immunofluorescence: HeLa cells stained with ARG54960 anti-CD38 antibody (green). DAPI (blue) for nuclear staining.



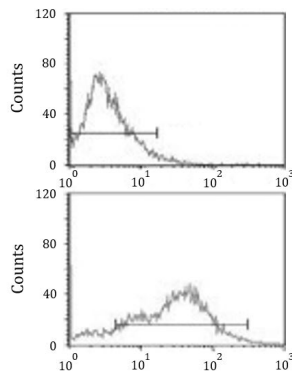
ARG54960 anti-CD38 antibody IHC-P image

Immunohistochemistry: Formalin-fixed and paraffin-embedded Human hepatocarcinoma stained with ARG54960 anti-CD38 antibody.



ARG54960 anti-CD38 antibody WB image

Western blot: 20 µg of RPMI8226 cell lysate stained with ARG54960 anti-CD38 antibody at 1:1000 dilution.



ARG54960 anti-CD38 antibody FACS image

Flow Cytometry: HepG2 cells stained with ARG54960 anti-CD38 antibody (bottom histogram) or without primary antibody control (top histogram), followed by incubation with FITC labelled secondary antibody.