

ARG54871 anti-PFDN6 antibody

Package: 100 µl
Store at: -20°C

Summary

Product Description	Rabbit Polyclonal antibody recognizes PFDN6
Tested Reactivity	Hu
Predict Reactivity	Ms, Bov
Tested Application	WB
Host	Rabbit
Clonality	Polyclonal
Isotype	IgG
Target Name	PFDN6
Species	Human
Immunogen	KLH-conjugated synthetic peptide corresponding to aa. 6-34 (N-terminus) of Human PFDN6.
Conjugation	Un-conjugated
Alternate Names	PFD6; HKE2; H2-KE2; Protein Ke2; KE-2; Prefoldin subunit 6

Application Instructions

Application table	Application	Dilution
	WB	1:1000
Application Note	* The dilutions indicate recommended starting dilutions and the optimal dilutions or concentrations should be determined by the scientist.	
Positive Control	CEM	

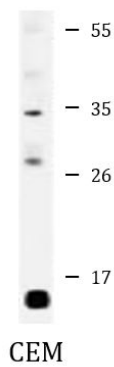
Properties

Form	Liquid
Purification	This antibody is prepared by Saturated Ammonium Sulfate (SAS) precipitation followed by dialysis against PBS.
Buffer	PBS and 0.09% (W/V) Sodium azide
Preservative	0.09% (W/V) Sodium azide
Storage instruction	For continuous use, store undiluted antibody at 2-8°C for up to a week. For long-term storage, aliquot and store at -20°C or below. Storage in frost free freezers is not recommended. Avoid repeated freeze/thaw cycles. Suggest spin the vial prior to opening. The antibody solution should be gently mixed before use.
Note	For laboratory research only, not for drug, diagnostic or other use.

Bioinformation

Database links	GeneID: 10471 Human Swiss-port # O15212 Human
Gene Symbol	PFDN6
Gene Full Name	prefoldin subunit 6
Background	PFDN6 is a subunit of the heteromeric prefoldin complex that chaperones nascent actin (see MIM 102560) and alpha- and beta-tubulin (see MIM 602529 and MIM 191130, respectively) chains pending their transfer to the cytosolic chaperonin containing TCP1 (MIM 186980) (CCT) complex (Hansen et al., 1999 [PubMed 10209023]).[supplied by OMIM, Jul 2010]
Function	Binds specifically to cytosolic chaperonin (c-CPN) and transfers target proteins to it. Binds to nascent polypeptide chain and promotes folding in an environment in which there are many competing pathways for nonnative proteins. [UniProt]
Research Area	Signaling Transduction antibody
Calculated Mw	15 kDa

Images



ARG54871 anti-PFDN6 antibody WB image

Western blot: 35 µg of CEM cell lysate stained with ARG54871 anti-PFDN6 antibody.