

## ARG54859 anti-LIF antibody

Package: 100 µl  
Store at: -20°C

### Summary

Product Description	Rabbit Polyclonal antibody recognizes LIF
Tested Reactivity	Hu
Tested Application	FACS, IHC-P, WB
Host	Rabbit
Clonality	Polyclonal
Isotype	IgG
Target Name	LIF
Species	Human
Immunogen	KLH-conjugated synthetic peptide corresponding to aa. 72-101 (Center) of Human LIF.
Conjugation	Un-conjugated
Alternate Names	LIF; Leukemia inhibitory factor; Emfilermin; CDF; DIA; Differentiation-stimulating factor; MLPLI; HILDA; Melanoma-derived LPL inhibitor; D factor

### Application Instructions

Application table	Application	Dilution
	FACS	1:10 - 1:50
	IHC-P	Assay-dependent
	WB	1:1000
Application Note	* The dilutions indicate recommended starting dilutions and the optimal dilutions or concentrations should be determined by the scientist.	
Positive Control	CEM	

### Properties

Form	Liquid
Purification	Purification with Protein A and immunogen peptide.
Buffer	PBS and 0.09% (W/V) Sodium azide
Preservative	0.09% (W/V) Sodium azide
Storage instruction	For continuous use, store undiluted antibody at 2-8°C for up to a week. For long-term storage, aliquot and store at -20°C or below. Storage in frost free freezers is not recommended. Avoid repeated freeze/thaw cycles. Suggest spin the vial prior to opening. The antibody solution should be gently mixed before use.
Note	For laboratory research only, not for drug, diagnostic or other use.

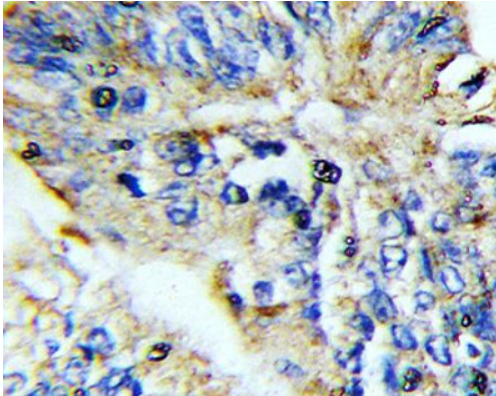
## Bioinformation

---

Database links	<a href="#">GeneID: 3976 Human</a> <a href="#">Swiss-port # P15018 Human</a>
Gene Symbol	LIF
Gene Full Name	leukemia inhibitory factor
Background	The protein encoded by this gene is a pleiotropic cytokine with roles in several different systems. It is involved in the induction of hematopoietic differentiation in normal and myeloid leukemia cells, induction of neuronal cell differentiation, regulator of mesenchymal to epithelial conversion during kidney development, and may also have a role in immune tolerance at the maternal-fetal interface. Alternatively spliced transcript variants encoding multiple isoforms have been observed for this gene. [provided by RefSeq, Mar 2012]
Function	LIF has the capacity to induce terminal differentiation in leukemic cells. Its activities include the induction of hematopoietic differentiation in normal and myeloid leukemia cells, the induction of neuronal cell differentiation, and the stimulation of acute-phase protein synthesis in hepatocytes. [UniProt]
Research Area	Cancer antibody; Cell Biology and Cellular Response antibody; Gene Regulation antibody; Immune System antibody; Neuroscience antibody
Calculated Mw	22 kDa
Cellular Localization	Secreted.

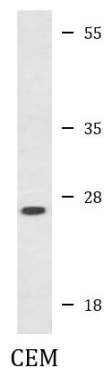
## Images

---



ARG54859 anti-LIF antibody IHC-P image

Immunohistochemistry: Formalin-fixed and paraffin-embedded Human colon carcinoma stained with ARG54859 anti-LIF antibody.



ARG54859 anti-LIF antibody WB image

Western blot: 35 µg of CEM cell lysate stained with ARG54859 anti-LIF antibody.

### ARG54859 anti-LIF antibody FACS image

Flow Cytometry: CEM cells stained with ARG54859 anti-LIF antibody (bottom histogram) or without primary antibody control (top histogram), followed by incubation with FITC labelled secondary antibody.

