

## ARG54853 anti-Gremlin antibody

Package: 100 µl  
Store at: -20°C

### Summary

Product Description	Rabbit Polyclonal antibody recognizes Gremlin
Tested Reactivity	Hu, Ms
Predict Reactivity	Rat
Tested Application	IHC-P, WB
Host	Rabbit
Clonality	Polyclonal
Isotype	IgG
Target Name	Gremlin
Species	Human
Immunogen	KLH-conjugated synthetic peptide corresponding to aa. 147-175 (C-terminus) of Human Gremlin.
Conjugation	Un-conjugated
Alternate Names	GREMLIN; Increased in high glucose protein 2; Gremlin-1; DUP15q; DAND2; CRAC1; MPSH; CKTSF1B1; PIG2; DRM; HMPS1; DAN domain family member 2; IHG-2; HMPS; Cysteine knot superfamily 1, BMP antagonist 1; Cell proliferation-inducing gene 2 protein; C15DUPq; CRCS4; Down-regulated in Mos-transformed cells protein

### Application Instructions

Application table	Application	Dilution
	IHC-P	Assay-dependent
	WB	1:1000
Application Note	* The dilutions indicate recommended starting dilutions and the optimal dilutions or concentrations should be determined by the scientist.	
Positive Control	CEM	

### Properties

Form	Liquid
Purification	Purification with Protein G.
Buffer	PBS and 0.09% (W/V) Sodium azide
Preservative	0.09% (W/V) Sodium azide
Storage instruction	For continuous use, store undiluted antibody at 2-8°C for up to a week. For long-term storage, aliquot and store at -20°C or below. Storage in frost free freezers is not recommended. Avoid repeated freeze/thaw cycles. Suggest spin the vial prior to opening. The antibody solution should be gently mixed before use.

Note For laboratory research only, not for drug, diagnostic or other use.

## Bioinformation

---

Database links [GeneID: 23892 Mouse](#)  
[GeneID: 26585 Human](#)  
[Swiss-port # O60565 Human](#)  
[Swiss-port # O70326 Mouse](#)

Gene Symbol Grem1

Gene Full Name gremlin 1

Background This gene encodes a member of the BMP (bone morphogenic protein) antagonist family. Like BMPs, BMP antagonists contain cystine knots and typically form homo- and heterodimers. The CAN (cerberus and dan) subfamily of BMP antagonists, to which this gene belongs, is characterized by a C-terminal cystine knot with an eight-membered ring. The antagonistic effect of the secreted glycosylated protein encoded by this gene is likely due to its direct binding to BMP proteins. As an antagonist of BMP, this gene may play a role in regulating organogenesis, body patterning, and tissue differentiation. In mouse, this protein has been shown to relay the sonic hedgehog (SHH) signal from the polarizing region to the apical ectodermal ridge during limb bud outgrowth. Alternatively spliced transcript variants encoding different isoforms have been found for this gene. [provided by RefSeq, Jul 2010]

Function Cytokine that may play an important role during carcinogenesis and metanephric kidney organogenesis, as BMP a antagonist required for early limb outgrowth and patterning in maintaining the FGF4-SHH feedback loop. Down-regulates the BMP4 signaling in a dose-dependent manner. Acts as inhibitor of monocyte chemotaxis. [UniProt]

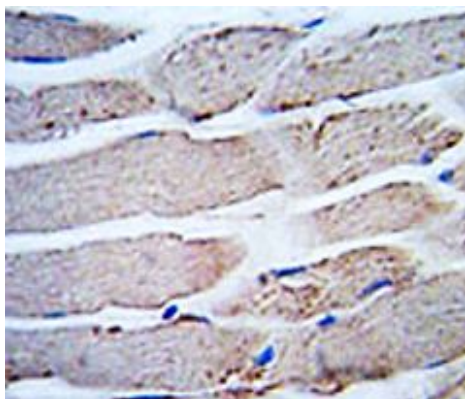
Research Area Developmental Biology antibody; Signaling Transduction antibody

Calculated Mw 21 kDa

Cellular Localization Secreted.

## Images

---



ARG54853 anti-Gremlin antibody IHC-P image

Immunohistochemistry: Formalin-fixed and paraffin-embedded Human skeletal muscle tissue stained with ARG54853 anti-Gremlin antibody.

ARG54853 anti-Gremlin antibody WB image

Western blot: 35 µg of CEM cell lysate stained with ARG54853 anti-Gremlin antibody.

