

## ARG54807 anti-ALDH1A3 antibody

Package: 100 µl  
Store at: -20°C

### Summary

Product Description	Rabbit Polyclonal antibody recognizes ALDH1A3
Tested Reactivity	Hu, Ms
Tested Application	IHC-P, WB
Host	Rabbit
Clonality	Polyclonal
Isotype	IgG
Target Name	ALDH1A3
Species	Human
Immunogen	KLH-conjugated synthetic peptide corresponding to aa. 24-51 (N-terminus) of Human ALDH1A3.
Conjugation	Un-conjugated
Alternate Names	RALDH-3; EC 1.2.1.5; Aldehyde dehydrogenase 6; ALDH6; RALDH3; MCOP8; RalDH3; ALDH1A6; Aldehyde dehydrogenase family 1 member A3; Retinaldehyde dehydrogenase 3

### Application Instructions

Application table	Application	Dilution
	IHC-P	Assay-dependent
	WB	1:1000
Application Note	* The dilutions indicate recommended starting dilutions and the optimal dilutions or concentrations should be determined by the scientist.	
Positive Control	293	

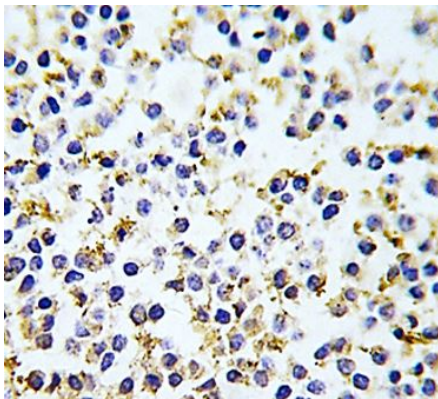
### Properties

Form	Liquid
Purification	This antibody is prepared by Saturated Ammonium Sulfate (SAS) precipitation followed by dialysis against PBS.
Buffer	PBS and 0.09% (W/V) Sodium azide
Preservative	0.09% (W/V) Sodium azide
Storage instruction	For continuous use, store undiluted antibody at 2-8°C for up to a week. For long-term storage, aliquot and store at -20°C or below. Storage in frost free freezers is not recommended. Avoid repeated freeze/thaw cycles. Suggest spin the vial prior to opening. The antibody solution should be gently mixed before use.
Note	For laboratory research only, not for drug, diagnostic or other use.

## Bioinformation

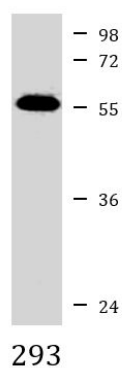
Database links	<a href="#">GeneID: 220 Human</a> <a href="#">GeneID: 56847 Mouse</a> <a href="#">Swiss-port # P47895 Human</a> <a href="#">Swiss-port # Q9JHW9 Mouse</a>
Gene Symbol	ALDH1A3
Gene Full Name	aldehyde dehydrogenase 1 family, member A3
Background	This gene encodes an aldehyde dehydrogenase enzyme that uses retinal as a substrate. Mutations in this gene have been associated with microphthalmia, isolated 8, and expression changes have also been detected in tumor cells. Alternative splicing results in multiple transcript variants. [provided by RefSeq, Jun 2014]
Function	Recognizes as substrates free retinal and cellular retinol-binding protein-bound retinal. Seems to be the key enzyme in the formation of an RA gradient along the dorso-ventral axis during the early eye development and also in the development of the olfactory system (By similarity). [UniProt]
Research Area	Metabolism antibody; Neuroscience antibody; Signaling Transduction antibody
Calculated Mw	56 kDa
Cellular Localization	Cytoplasm.

## Images



ARG54807 anti-ALDH1A3 antibody IHC-P image

Immunohistochemistry: Formalin-fixed and paraffin-embedded Human kidney tissue stained with ARG54807 anti-ALDH1A3 antibody.



ARG54807 anti-ALDH1A3 antibody WB image

Western blot: 35 µg of 293 cell lysate stained with ARG54807 anti-ALDH1A3 antibody.