

## ARG54705 anti-ACAT1 antibody

Package: 100 µl  
Store at: -20°C

### Summary

Product Description	Rabbit Polyclonal antibody recognizes ACAT1
Tested Reactivity	Hu, Ms
Predict Reactivity	Mk
Tested Application	IHC-P, WB
Host	Rabbit
Clonality	Polyclonal
Target Name	ACAT1
Species	Human
Immunogen	KLH-conjugated synthetic peptide corresponding to aa. 296-329 (C-terminus) of Human ACAT1 (NP_000010.1).
Conjugation	Un-conjugated
Alternate Names	EC 2.3.1.9; Acetoacetyl-CoA thiolase; MAT; T2; ACAT; THIL; Acetyl-CoA acetyltransferase, mitochondrial

### Application Instructions

Application table	Application	Dilution
	IHC-P	Assay-dependent
	WB	1:1000
Application Note	* The dilutions indicate recommended starting dilutions and the optimal dilutions or concentrations should be determined by the scientist.	

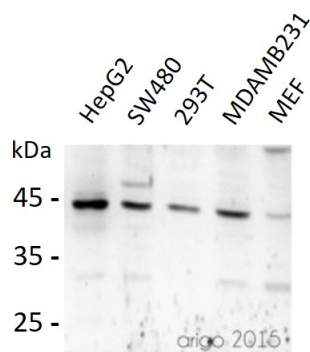
### Properties

Purification	This antibody is prepared by Saturated Ammonium Sulfate (SAS) precipitation followed by dialysis against PBS.
Buffer	PBS and 0.09% (W/V) Sodium azide
Preservative	0.09% (W/V) Sodium azide
Storage instruction	For continuous use, store undiluted antibody at 2-8°C for up to a week. For long-term storage, aliquot and store at -20°C or below. Storage in frost free freezers is not recommended. Avoid repeated freeze/thaw cycles. Suggest spin the vial prior to opening. The antibody solution should be gently mixed before use.
Note	For laboratory research only, not for drug, diagnostic or other use.

### Bioinformation

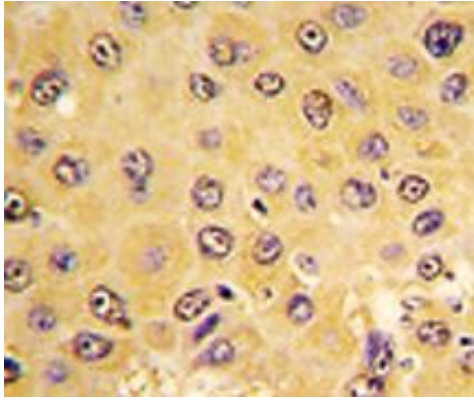
Database links	<a href="#">GeneID: 110446 Mouse</a> <a href="#">GeneID: 38 Human</a> <a href="#">Swiss-port # P24752 Human</a> <a href="#">Swiss-port # Q8QZT1 Mouse</a>
Gene Symbol	ACAT1
Gene Full Name	acetyl-CoA acetyltransferase 1
Background	This gene encodes a mitochondrially localized enzyme that catalyzes the reversible formation of acetoacetyl-CoA from two molecules of acetyl-CoA. Defects in this gene are associated with 3-ketothiolase deficiency, an inborn error of isoleucine catabolism characterized by urinary excretion of 2-methyl-3-hydroxybutyric acid, 2-methylacetoacetic acid, tiglylglycine, and butanone. [provided by RefSeq, Feb 2009]
Function	Plays a major role in ketone body metabolism. [From Uniprot]
Highlight	Related products: <a href="#">ACAT1 antibodies</a> ; <a href="#">Anti-Rabbit IgG secondary antibodies</a> ; Related news: <a href="#">Cholesterol, the weakness of anaplastic large cell lymphoma (ALCL)</a>
Research Area	Cancer antibody; Controls and Markers antibody; Metabolism antibody; Signaling Transduction antibody
Calculated Mw	45 kDa
PTM	Succinylation at Lys-268, adjacent to a coenzyme A binding site. Desuccinylated by SIRT5 (By similarity).
Cellular Localization	Mitochondrion.

## Images



ARG54705 anti-ACAT1 antibody WB image

Western blot: 30 µg of 1) HepG2, 2) SW480, 3) 293T, 4) MDAMB231, and 5) MEF lysate stained with ARG54705 anti-ACAT1 antibody at 1:500 dilution.



**ARG54705 anti-ACAT1 antibody IHC-P image**

Immunohistochemistry: Paraffin-embedded Human hepatocarcinoma tissue stained with ARG54705 anti-ACAT1 antibody.