

ARG54645 anti-Strep-tag II antibody

Package: 50 µg
Store at: -20°C

Summary

Product Description	Rabbit Polyclonal antibody recognizes Strep-tag II
Tested Reactivity	Other
Tested Application	ELISA, WB
Host	Rabbit
Clonality	Polyclonal
Isotype	IgG
Target Name	Strep-tag II
Species	Others
Immunogen	Synthetic peptide sequence "asWSHPQFEKga" for strep II-tag.
Conjugation	Un-conjugated

Application Instructions

Application table	Application	Dilution
	ELISA	Assay-dependent
	WB	1 µg/ml
Application Note	* The dilutions indicate recommended starting dilutions and the optimal dilutions or concentrations should be determined by the scientist.	

Properties

Form	Liquid
Purification	Immunogen affinity purified
Buffer	PBS and 0.02% Sodium azide
Preservative	0.02% Sodium azide
Concentration	1 mg/ml
Storage instruction	For continuous use, store undiluted antibody at 2-8°C for up to a week. For long-term storage, aliquot and store at -20°C or below. Storage in frost free freezers is not recommended. Avoid repeated freeze/thaw cycles. Suggest spin the vial prior to opening. The antibody solution should be gently mixed before use.
Note	For laboratory research only, not for drug, diagnostic or other use.

Bioinformation

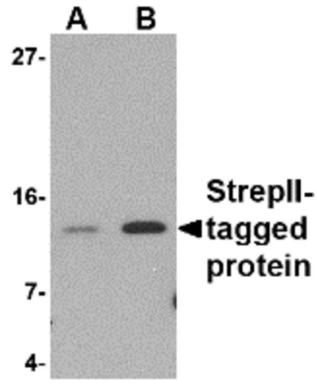
Background	StrepII-tag Antibody: Streptavidin is a tetrameric protein purified from Streptomyces avidinii. It has
------------	--

wide use in numerous molecular biological protocols due to its strong affinity for biotin. The original Strep-tag is a nine amino acid peptide with high specificity and affinity towards streptavidin. The addition of this tag to the C-terminus of recombinant proteins allowed the simple purification of protein by use of affinity columns. It was re-engineered to allow it to also placed at the N-terminus of recombinant proteins.

Research Area

Controls and Markers antibody

Images



ARG54645 anti-Strep-tag II antibody WB image

Western blot: (A) 5 ng and (B) 25 ng of Strep II-tagged recombinant protein stain with ARG54645 anti-Strep-tag II antibody at 1 μ g/ml.