

## ARG54338 anti-CIDE B antibody

Package: 50 µg  
Store at: -20°C

### Summary

Product Description	Rabbit Polyclonal antibody recognizes CIDE B
Tested Reactivity	Ms
Tested Application	WB
Specificity	This antibody recognizes mouse CIDE-B (25kDa) and does not cross-react with CIDE-A.
Host	Rabbit
Clonality	Polyclonal
Isotype	IgG
Target Name	CIDE B
Species	Mouse
Immunogen	Peptide corresponding to aa 204-219 of mouse CIDE-B (accession no. AF041377).
Conjugation	Un-conjugated
Alternate Names	Cell death-inducing DFFA-like effector B; Cell death activator CIDE-B

### Application Instructions

Application table	<table><thead><tr><th>Application</th><th>Dilution</th></tr></thead><tbody><tr><td>WB</td><td>Assay-dependent</td></tr></tbody></table>	Application	Dilution	WB	Assay-dependent
Application	Dilution				
WB	Assay-dependent				
Application Note	* The dilutions indicate recommended starting dilutions and the optimal dilutions or concentrations should be determined by the scientist.				
Positive Control	Mouse liver				

### Properties

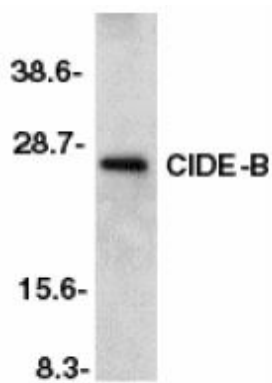
Form	Liquid
Purification	Immunoaffinity chroma-tography
Buffer	PBS (pH 7.4) and 0.02% Sodium azide
Preservative	0.02% Sodium azide
Storage instruction	For continuous use, store undiluted antibody at 2-8°C for up to a week. For long-term storage, aliquot and store at -20°C or below. Storage in frost free freezers is not recommended. Avoid repeated freeze/thaw cycles. Suggest spin the vial prior to opening. The antibody solution should be gently mixed before use.
Note	For laboratory research only, not for drug, diagnostic or other use.

### Bioinformation

Database links	<a href="#">GeneID: 12684 Mouse</a> <a href="#">Swiss-port # O70303 Mouse</a>
Gene Symbol	Cideb
Gene Full Name	cell death-inducing DNA fragmentation factor, alpha subunit-like effector B
Background	DFF45-related proteins CIDE-A and CIDE-B have recently been identified. CIDE contains a new type of domain termed CIDE-N, which has high homology with the regulatory domains of DFF45/ICAD and DFF40/CAD. Expression of CIDE-B induces apoptosis, which is inhibited by DFF45. CIDE-B is a DFF45-inhibitable effector that promotes cell death and DNA fragmentation. CIDE-B is expressed mainly in liver and at lower levels in spleen, kidney, peripheral blood lymphocytes, and bone marrow.
Function	Activates apoptosis. [UniProt]
Research Area	Cell Biology and Cellular Response antibody; Cell Death antibody; Gene Regulation antibody; Metabolism antibody
Calculated Mw	25 kDa

## Images

---



ARG54338 anti-CIDE B antibody WB image

Western blot: murine liver tissue stained with ARG54338 anti-CIDE B antibody at 2 µg/ml dilution.