

ARG54197 anti-CD20 antibody [2H7] (APC)

Package: 50 tests

Store at: 4°C

Summary

| | |
|---------------------|---|
| Product Description | APC-conjugated Mouse Monoclonal antibody [2H7] recognizes CD20 |
| Tested Reactivity | Hu, NHuPrm |
| Tested Application | FACS |
| Specificity | The mouse monoclonal antibody 2H7 recognizes CD20 (B1, Bp35), a 3337 kDa nonglycosylated membrane receptor with four transmembrane domains, expressed on preB lymphocytes, resting and activated B cells (not plasma cells), follicular dendritic cells, and at low levels on peripheral blood T lymphocytes. |
| Host | Mouse |
| Clonality | Monoclonal |
| Clone | 2H7 |
| Isotype | IgG2b |
| Target Name | CD20 |
| Species | Human |
| Immunogen | Human tonsillar B cells |
| Conjugation | APC |
| Alternate Names | Bp35; LEU-16; B-lymphocyte surface antigen B1; B-lymphocyte antigen CD20; CD20; S7; CD antigen CD20; Leukocyte surface antigen Leu-16; B1; CVID5; Membrane-spanning 4-domains subfamily A member 1; MS4A2 |

Application Instructions

| Application table | <table><thead><tr><th>Application</th><th>Dilution</th></tr></thead><tbody><tr><td>FACS</td><td>10 µl / 10⁶ cells</td></tr></tbody></table> | Application | Dilution | FACS | 10 µl / 10 ⁶ cells |
|-------------------|--|-------------|----------|------|-------------------------------|
| Application | Dilution | | | | |
| FACS | 10 µl / 10 ⁶ cells | | | | |
| Application Note | * The dilutions indicate recommended starting dilutions and the optimal dilutions or concentrations should be determined by the scientist. | | | | |

Properties

| | |
|---------------------|---|
| Form | Liquid |
| Purification Note | The purified antibody is conjugated with cross-linked Allophycocyanin (APC) under optimum conditions. The conjugate is purified by size-exclusion chromatography and adjusted for direct use. No reconstitution is necessary. |
| Buffer | PBS, 15 mM Sodium azide and 0.2% (w/v) high-grade protease free BSA |
| Preservative | 15 mM Sodium azide |
| Stabilizer | 0.2% (w/v) high-grade protease free BSA |
| Storage instruction | Aliquot and store in the dark at 2-8°C. Keep protected from prolonged exposure to light. Avoid |

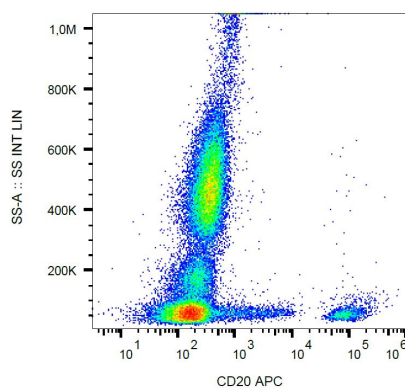
repeated freeze/thaw cycles. Suggest spin the vial prior to opening. The antibody solution should be gently mixed before use.

Note For laboratory research only, not for drug, diagnostic or other use.

Bioinformation

| | |
|----------------|--|
| Database links | GeneID: 931 Human Swiss-port # P11836 Human |
| Gene Symbol | MS4A1 |
| Gene Full Name | membrane-spanning 4-domains, subfamily A, member 1 |
| Background | CD20 is a member of the membrane-spanning 4A gene family. Members of this nascent protein family are characterized by common structural features and similar intron/exon splice boundaries and display unique expression patterns among hematopoietic cells and nonlymphoid tissues. This gene encodes a B-lymphocyte surface molecule which plays a role in the development and differentiation of B-cells into plasma cells. This family member is localized to 11q12, among a cluster of family members. Alternative splicing of this gene results in two transcript variants which encode the same protein. [provided by RefSeq, Jul 2008] |
| Function | CD20 is a B-lymphocyte-specific membrane protein. It plays a role in the regulation of cellular calcium influx necessary for the development, differentiation, and activation of B-lymphocytes (PubMed:3925015, PubMed:7684739, PubMed:12920111). Functions as a store-operated calcium (SOC) channel component promoting calcium influx after activation by the B-cell receptor/BCR (PubMed:7684739, PubMed:12920111, PubMed:18474602). [UniProt] |
| Highlight | Related products: CD20 antibodies ; CD20 ELISA Kits ; CD20 Duos / Panels ; Anti-Mouse IgG secondary antibodies ; Related news: New antibody panels and duos for Tumor immune microenvironment Tumor-Infiltrating Lymphocytes (TILs) Exploring Antiviral Immune Response |
| Research Area | Cancer antibody; Developmental Biology antibody; Immune System antibody; B cell Marker antibody; Immature B Cell Marker antibody; Inflammatory Cell Marker antibody; Tumor-infiltrating Lymphocyte Study antibody |
| Calculated Mw | 33 kDa |
| PTM | Phosphorylated. Might be functionally regulated by protein kinase(s). |

Images



ARG54197 anti-CD20 antibody [2H7] (APC) FACS image

Flow Cytometry: Human peripheral blood stained with ARG54197 anti-CD20 antibody [2H7] (APC).