

## ARG54097 anti-MECT1 / TORC1 antibody

Package: 50 µl  
Store at: -20°C

### Summary

Product Description	Mouse Monoclonal antibody recognizes MECT1 / TORC1
Tested Reactivity	Hu, Ms, Rat, Mk
Tested Application	ICC/IF, WB
Host	Mouse
Clonality	Monoclonal
Isotype	IgM
Target Name	MECT1 / TORC1
Species	Human
Immunogen	Purified recombinant human TORC1 protein fragments expressed in E.coli.
Conjugation	Un-conjugated
Alternate Names	CREB-regulated transcription coactivator 1; MECT1; WAMTP1; Transducer of CREB protein 1; TORC1; Mucoepidermoid carcinoma translocated protein 1; Transducer of regulated cAMP response element-binding protein 1; TORC-1

### Application Instructions

Application table	Application	Dilution
	ICC/IF	1:200
	WB	1:2000
Application Note	* The dilutions indicate recommended starting dilutions and the optimal dilutions or concentrations should be determined by the scientist.	

### Properties

Form	Liquid
Buffer	Ascites
Storage instruction	For continuous use, store undiluted antibody at 2-8°C for up to a week. For long-term storage, aliquot and store at -20°C or below. Storage in frost free freezers is not recommended. Avoid repeated freeze/thaw cycles. Suggest spin the vial prior to opening. The antibody solution should be gently mixed before use.
Note	For laboratory research only, not for drug, diagnostic or other use.

### Bioinformation

Gene Symbol	CRTC1
Gene Full Name	CREB regulated transcription coactivator 1

<b>Background</b>	Transcriptional coactivator for CREB1 which activates transcription through both consensus and variant cAMP response element (CRE) sites. Acts as a coactivator, in the SIK/TORC signaling pathway, being active when dephosphorylated and acts independently of CREB1 'Ser-133' phosphorylation. Enhances the interaction of CREB1 with TAF4. Regulates the expression of specific CREB-activated genes such as the steroidogenic gene, StAR. Potent coactivator of PGC1alpha and inducer of mitochondrial biogenesis in muscle cells. Also coactivator for TAX activation of the human T-cell leukemia virus type 1 (HTLV-1) long terminal repeats (LTR). In the hippocampus, involved in late-phase long-term potentiation (L-LTP) maintenance at the Schaffer collateral-CA1 synapses. May be required for dendritic growth of developing cortical neurons.
<b>Function</b>	Transcriptional coactivator for CREB1 which activates transcription through both consensus and variant cAMP response element (CRE) sites. Acts as a coactivator, in the SIK/TORC signaling pathway, being active when dephosphorylated and acts independently of CREB1 'Ser-133' phosphorylation. Enhances the interaction of CREB1 with TAF4. Regulates the expression of specific CREB-activated genes such as the steroidogenic gene, StAR. Potent coactivator of PGC1alpha and inducer of mitochondrial biogenesis in muscle cells. Also coactivator for TAX activation of the human T-cell leukemia virus type 1 (HTLV-1) long terminal repeats (LTR). In the hippocampus, involved in late-phase long-term potentiation (L-LTP) maintenance at the Schaffer collateral-CA1 synapses. May be required for dendritic growth of developing cortical neurons (By similarity). In concert with SIK1, regulates the light-induced entrainment of the circadian clock. In response to light stimulus, coactivates the CREB-mediated transcription of PER1 which plays an important role in the photic entrainment of the circadian clock. [UniProt]
<b>Research Area</b>	Gene Regulation antibody; Metabolism antibody; Signaling Transduction antibody
<b>Calculated Mw</b>	67 kDa
<b>PTM</b>	Phosphorylation/dephosphorylation states of Ser-151 are required for regulating transduction of CREB activity. TORCs are inactive when phosphorylated, and active when dephosphorylated at this site. This primary site of phosphorylation is mediated by SIKs (SIK1 and SIK2), is regulated by cAMP and calcium levels and is dependent on the phosphorylation of SIKs by LKB1 (By similarity).
<b>Cellular Localization</b>	Cytoplasm. Nucleus.

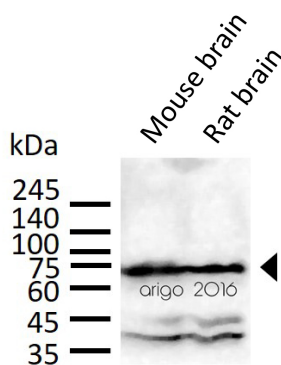
## Images

ARG54097 anti-MECT1 / TORC1 antibody WB image



Western blot: 30 µg of HeLa cell lysate stained with ARG54097 anti-MECT1 / TORC1 antibody at 1:2000 dilution.

ARG54097 anti-MECT1 / TORC1 antibody WB image



Western blot: 30 µg of Mouse brain, and Rat brain lysate stained with ARG54097 anti-MECT1 / TORC1 antibody at 1:2000 dilution.