

## ARG54073 anti-Syntenin 1 antibody

Package: 100 µl  
Store at: -20°C

### Summary

Product Description	Mouse Monoclonal antibody recognizes Syntenin 1
Tested Reactivity	Hu
Tested Application	WB
Host	Mouse
Clonality	Monoclonal
Isotype	IgG2b
Target Name	Syntenin 1
Species	Human
Immunogen	Purified recombinant Human Syntenin 1 protein fragments expressed in E.coli.
Conjugation	Un-conjugated
Alternate Names	SYCL; MDA-9; MDA9; Pro-TGF-alpha cytoplasmic domain-interacting protein 18; Syndecan-binding protein 1; TACIP18; Scaffold protein Pbp1; ST1; Syntenin-1; Melanoma differentiation-associated protein 9

### Application Instructions

Application table	Application	Dilution
	WB	1:1000
Application Note	* The dilutions indicate recommended starting dilutions and the optimal dilutions or concentrations should be determined by the scientist.	
Observed Size	32 kDa	

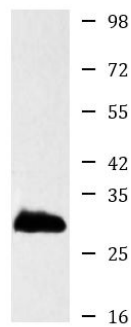
### Properties

Form	Liquid
Purification	Affinity purified
Buffer	0.1M Tris-Glycine (pH 7.4), 150 mM NaCl, 0.2% Sodium azide and 50% Glycerol
Preservative	0.2% Sodium azide
Stabilizer	50% Glycerol
Concentration	1 mg/ml
Storage instruction	For continuous use, store undiluted antibody at 2-8°C for up to a week. For long-term storage, aliquot and store at -20°C. Storage in frost free freezers is not recommended. Avoid repeated freeze/thaw cycles. Suggest spin the vial prior to opening. The antibody solution should be gently mixed before use.
Note	For laboratory research only, not for drug, diagnostic or other use.

## Bioinformation

Database links	<a href="#">GeneID: 6386 Human</a> <a href="#">Swiss-port # O00560 Human</a>
Gene Symbol	SDCBP
Gene Full Name	syndecan binding protein (syntenin)
Background	Seems to function as an adapter protein. In adherens junctions may function to couple syndecans to cytoskeletal proteins or signaling components. Seems to couple transcription factor SOX4 to the IL-5 receptor (IL5RA). May also play a role in vesicular trafficking. Seems to be required for the targeting of TGFA to the cell surface in the early secretory pathway.
Function	Seems to function as an adapter protein. In adherens junctions may function to couple syndecans to cytoskeletal proteins or signaling components. Seems to couple transcription factor SOX4 to the IL-5 receptor (IL5RA). May also play a role in vesicular trafficking. Seems to be required for the targeting of TGFA to the cell surface in the early secretory pathway. [UniProt]
Research Area	Neuroscience antibody
Calculated Mw	32 kDa
PTM	Phosphorylated on tyrosine residues.
Cellular Localization	Nucleus. Cytoplasm. Mitochondrion. Note: Cytoplasmic during the interphase. Reversibly translocated from cytoplasm to nucleus when phosphorylated before G2-M transition when associated with cyclin-B1. Accumulates in mitochondria in G2-arrested cells upon DNA-damage.

## Images



HeLa

ARG54073 anti-Syntenin 1 antibody WB image

Western blot: HeLa cell lysate stained with ARG54073 anti-Syntenin 1 antibody at 1:1000 dilution.