

**ARG53935**  
**anti-HLA A2 antibody [BB7.2] (PE)**Package: 100 tests  
Store at: 4°C

### Summary

Product Description	PE-conjugated Mouse Monoclonal antibody [BB7.2] recognizes HLA A2
Tested Reactivity	Hu
Tested Application	FACS
Specificity	The clone BB7.2 recognizes an epitope at the C-terminus of alpha-2 helix and a turn on one of the underlying beta strands within the human HLA-A2 histocompatibility antigen.
Host	Mouse
Clonality	Monoclonal
Clone	BB7.2
Isotype	IgG2b
Target Name	HLA A2
Immunogen	HLA-A2 solubilised by papain_x000D_
Conjugation	PE
Alternate Names	MHC class I antigen A*1; HLAA; HLA class I histocompatibility antigen, A-1 alpha chain

### Application Instructions

Application table	Application	Dilution
	FACS	20 µl / 10 <sup>6</sup> cells

**Application Note** \* The dilutions indicate recommended starting dilutions and the optimal dilutions or concentrations should be determined by the scientist.

### Properties

Form	Liquid
Purification Note	The purified antibody is conjugated with R-Phycoerythrin (PE) under optimum conditions. The conjugate is purified by size-exclusion chromatography and adjusted for direct use. No reconstitution is necessary.
Buffer	PBS, 15 mM Sodium azide and 0.2% (w/v) high-grade protease free BSA
Preservative	15 mM Sodium azide
Stabilizer	0.2% (w/v) high-grade protease free BSA
Storage instruction	Aliquot and store in the dark at 2-8°C. Keep protected from prolonged exposure to light. Avoid repeated freeze/thaw cycles. Suggest spin the vial prior to opening. The antibody solution should be gently mixed before use.
Note	For laboratory research only, not for drug, diagnostic or other use.

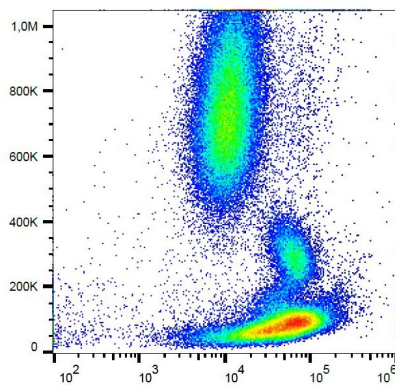
## Bioinformation

---

Database links	<a href="#">GeneID: 3105 Human</a> <a href="#">Swiss-port # P30443 Human</a>
Gene Symbol	HLA-A
Gene Full Name	major histocompatibility complex, class I, A
Background	HLA-A2 (44 kDa) is the most frequent HLA-A allele in human ethnic populations. HLA-A, together with HLA-B and HLA-C, represent human HLA class I major histocompatibility (MHC) antigens. These intrinsic membrane glycoproteins are expressed on nucleated cells and noncovalently associate with an invariant beta2 microglobulin. They carry foreign determinants important for immune recognition by cytotoxic T cells, thus important for anti-viral and anti-tumour defence._x000D_
Function	Involved in the presentation of foreign antigens to the immune system. [UniProt]
Research Area	Immune System antibody
Calculated Mw	40 kDa
PTM	Polyubiquitinated in a post ER compartment by interaction with human herpesvirus 8 MIR1 protein. This targets the protein for rapid degradation via the ubiquitin system (By similarity).

## Images

---



ARG53935 anti-HLA A2 antibody [BB7.2] (PE) FACS image

Flow Cytometry: Human peripheral blood cells stained with ARG53935 anti-HLA A2 antibody [BB7.2] (PE).