

ARG52752 anti-CD31 antibody [SP38]

Package: 50 µl
Store at: -20°C

Summary

Product Description	Rabbit Monoclonal antibody [SP38] recognizes CD31
Tested Reactivity	Hu, Ms
Tested Application	IHC-P, WB
Host	Rabbit
Clonality	Monoclonal
Clone	SP38
Isotype	IgG
Target Name	CD31
Antigen Species	Human
Immunogen	Synthetic peptide corresponding to C-terminus of mouse CD31 protein.
Conjugation	Un-conjugated
Alternate Names	EndoCAM; CD31/EndoCAM; PECAM-1; CD31; PECA1; CD antigen CD31; GPIIA ¹ ; endoCAM; Platelet endothelial cell adhesion molecule

Application Instructions

Application table	Application	Dilution
	IHC-P	1:50
	WB	1:500
Application Note	IHC-P: Incubation Time: 10 min at RT. * The dilutions indicate recommended starting dilutions and the optimal dilutions or concentrations should be determined by the scientist.	
Positive Control	Tonsil	
Calculated Mw	83 kDa	
Observed Size	~ 140 kDa	

Properties

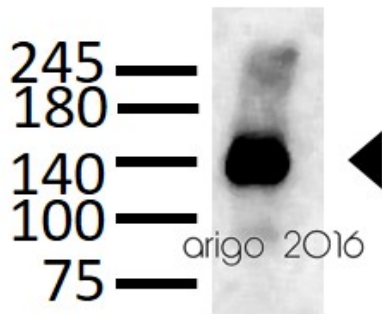
Form	Liquid
Buffer	Tissue culture supernatant in TBS (pH 7.5), 1% BSA and < 0.1% Sodium azide
Preservative	< 0.1% Sodium azide
Stabilizer	1% BSA
Storage instruction	For continuous use, store undiluted antibody at 2-8°C for up to a week. For long-term storage, aliquot and store at -20°C or below. Storage in frost free freezers is not recommended. Avoid repeated

freeze/thaw cycles. Suggest spin the vial prior to opening. The antibody solution should be gently mixed before use.

Note For laboratory research only, not for drug, diagnostic or other use.

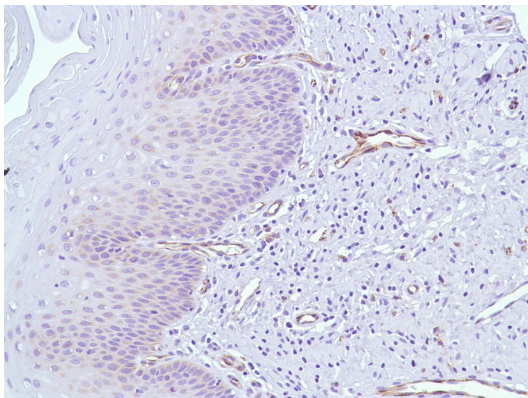
Bioinformation

Database links	GeneID: 18613 Mouse GeneID: 5175 Human Swiss-port # P16284 Human Swiss-port # Q08481 Mouse
Background	CD31 protein is found on the surface of platelets, monocytes, neutrophils, and some types of T-cells, and makes up a large portion of endothelial cell intercellular junctions. The encoded protein is a member of the immunoglobulin superfamily and is likely involved in leukocyte migration, angiogenesis, and integrin activation. [provided by RefSeq, May 2010]
Function	CD31 is a cell adhesion molecule which is required for leukocyte transendothelial migration (TEM) under most inflammatory conditions (PubMed:19342684, PubMed:17580308). Tyr-690 plays a critical role in TEM and is required for efficient trafficking of PECAM1 to and from the lateral border recycling compartment (LBRC) and is also essential for the LBRC membrane to be targeted around migrating leukocytes (PubMed:19342684). Trans-homophilic interaction may play a role in endothelial cell-cell adhesion via cell junctions (PubMed:27958302). Heterophilic interaction with CD177 plays a role in transendothelial migration of neutrophils (PubMed:17580308). Homophilic ligation of PECAM1 prevents macrophage-mediated phagocytosis of neighboring viable leukocytes by transmitting a detachment signal (PubMed:12110892). Promotes macrophage-mediated phagocytosis of apoptotic leukocytes by tethering them to the phagocytic cells; PECAM1-mediated detachment signal appears to be disabled in apoptotic leukocytes (PubMed:12110892). Modulates bradykinin receptor BDKRB2 activation (PubMed:18672896). Regulates bradykinin- and hyperosmotic shock-induced ERK1/2 activation in endothelial cells (PubMed:18672896). Induces susceptibility to atherosclerosis. Isoform Delta15: Does not protect against apoptosis. [UniProt]
Highlight	Related products: CD31 antibodies ; CD31 Duos / Panels ; Anti-Rabbit IgG secondary antibodies ; Related news: Besides tumor suppression, what's p53 busy for during embryogenesis? Vascular development is regulated by FGF-dependent metabolic control
Research Area	Cancer antibody; Cell Biology and Cellular Response antibody; Controls and Markers antibody; Developmental Biology antibody; Signaling Transduction antibody; Endothelial Cell Marker antibody; Microvascular Density Study antibody
Cellular Localization	Membrane



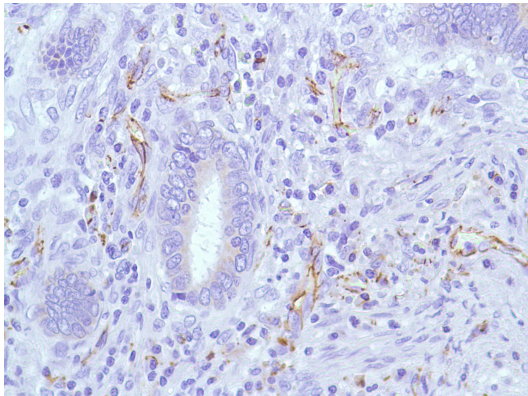
ARG52752 anti-CD31 antibody [SP38] WB image

Western blot: 30 μ g of HUVEC cell lysate stained with ARG52752 anti-CD31 antibody [SP38] at 1:500 dilution.



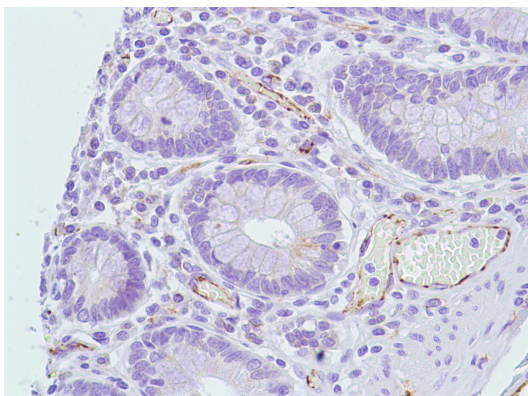
ARG52752 anti-CD31 antibody [SP38] IHC-P image

Immunohistochemistry: Human Cervix stained with CD31 antibody [SP38] (ARG52752)



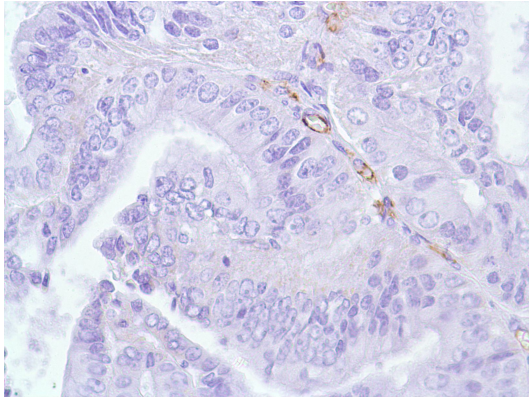
ARG52752 anti-CD31 antibody [SP38] IHC-P image

Immunohistochemistry: Human Colon Adenocarcinoma stained with CD31 antibody [SP38] (ARG52752)



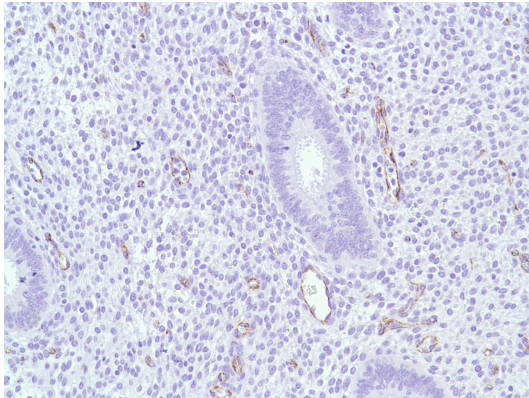
ARG52752 anti-CD31 antibody [SP38] IHC-P image

Immunohistochemistry: Human Colon stained with CD31 antibody [SP38] (ARG52752)



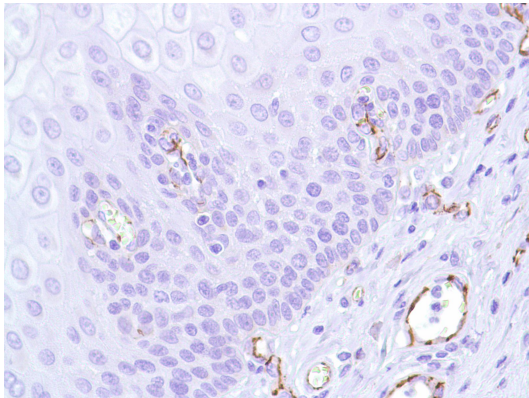
ARG52752 anti-CD31 antibody [SP38] IHC-P image

Immunohistochemistry: Human Endometrial Adenocarcinoma stained with CD31 antibody [SP38] (ARG52752)



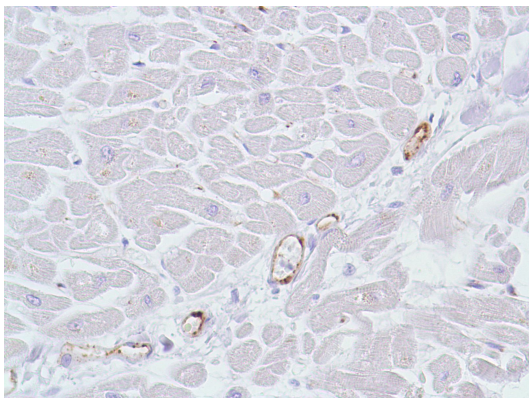
ARG52752 anti-CD31 antibody [SP38] IHC-P image

Immunohistochemistry: Human Endometrium stained with CD31 antibody [SP38] (ARG52752)



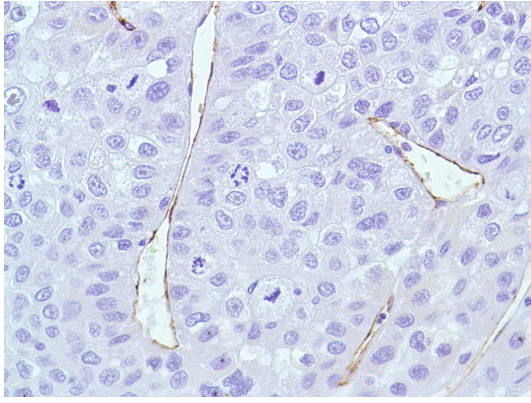
ARG52752 anti-CD31 antibody [SP38] IHC-P image

Immunohistochemistry: Human Esophagus stained with CD31 antibody [SP38] (ARG52752)



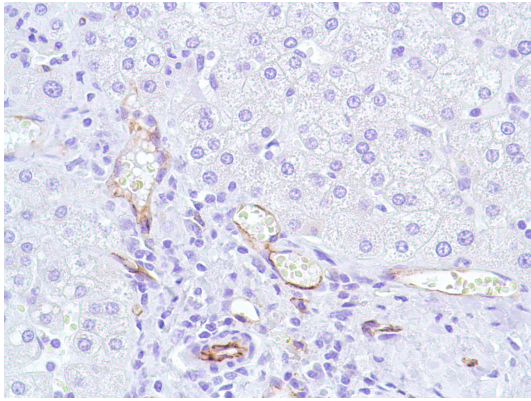
ARG52752 anti-CD31 antibody [SP38] IHC-P image

Immunohistochemistry: Human Heart stained with CD31 antibody [SP38] (ARG52752)



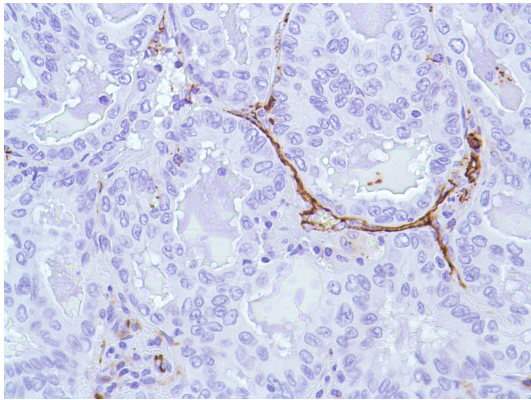
ARG52752 anti-CD31 antibody [SP38] IHC-P image

Immunohistochemistry: Human Liver Hepatocellular Carcinoma stained with CD31 antibody [SP38] (ARG52752)



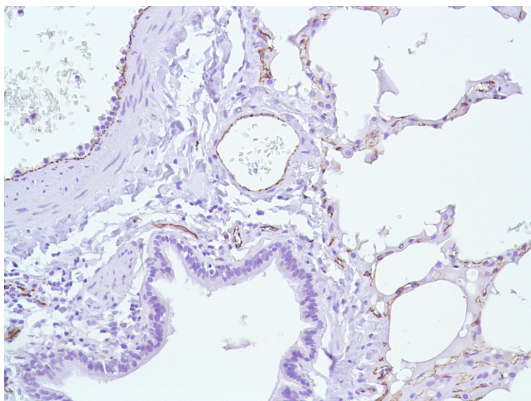
ARG52752 anti-CD31 antibody [SP38] IHC-P image

Immunohistochemistry: Human Liver stained with CD31 antibody [SP38] (ARG52752)



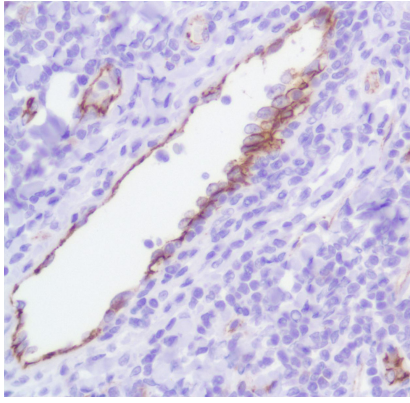
ARG52752 anti-CD31 antibody [SP38] IHC-P image

Immunohistochemistry: Human Lung Adenocarcinoma stained with CD31 antibody [SP38] (ARG52752)



ARG52752 anti-CD31 antibody [SP38] IHC-P image

Immunohistochemistry: Human Lung stained with CD31 antibody [SP38] (ARG52752)



ARG52752 anti-CD31 antibody [SP38] IHC-P image

Immunohistochemistry: Human Tonsil stained with CD31 antibody [SP38] (ARG52752)