

ARG52533 anti-Arginase-1 antibody [SP156]

Package: 100 µl
Store at: -20°C

Summary

Product Description	Rabbit Monoclonal antibody [SP156] recognizes Arginase-1
Tested Reactivity	Hu
Tested Application	IHC-P
Host	Rabbit
Clonality	Monoclonal
Clone	SP156
Isotype	IgG
Target Name	Arginase 1
Antigen Species	Human
Immunogen	Synthetic peptide derived from the C-terminus of human arginase-1 protein.
Conjugation	Un-conjugated
Alternate Names	EC 3.5.3.1; Type I arginase; Arginase-1; Liver-type arginase

Application Instructions

Predict Reactivity	Pig				
Application table	<table><thead><tr><th>Application</th><th>Dilution</th></tr></thead><tbody><tr><td>IHC-P</td><td>1:100</td></tr></tbody></table>	Application	Dilution	IHC-P	1:100
Application	Dilution				
IHC-P	1:100				
Application Note	IHC-P: Antigen Retrieval: Boil tissue section in EDTA buffer, pH 8.0 for 10 min followed by cooling at room temperature for 20 min. Incubation Time: 10 min at RT. * The dilutions indicate recommended starting dilutions and the optimal dilutions or concentrations should be determined by the scientist.				
Positive Control	Hepatocellular Carcinoma, Liver				
Calculated Mw	35 kDa				

Properties

Form	Liquid
Purification	Purified by protein A/G
Buffer	PBS (pH 7.6), 1% BSA and < 0.1% Sodium azide
Preservative	< 0.1% Sodium azide
Stabilizer	1% BSA
Storage instruction	For continuous use, store undiluted antibody at 2-8°C for up to a week. For long-term storage, aliquot and store at -20°C or below. Storage in frost free freezers is not recommended. Avoid repeated

freeze/thaw cycles. Suggest spin the vial prior to opening. The antibody solution should be gently mixed before use.

Note For laboratory research only, not for drug, diagnostic or other use.

Bioinformation

Database links [GeneID: 383 Human](#)

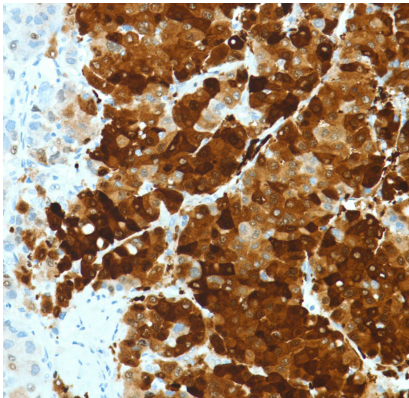
[Swiss-port # P05089 Human](#)

Background Arginase-1 (ARG1) catalyzes the hydrolysis of L-arginine into ornithine and urea, a critical step for the urea cycle. Defects in ARG1 are the cause of argininemia, an autosomal recessive disorder characterized by hyperammonemia. There are several isoforms of mammalian arginase. The type I isoform, is a cytosolic enzyme and expressed predominantly in the liver as a component of the urea cycle. Hepatocellular carcinoma usually shows higher protein expression of ARG1 than normal liver cells.

Research Area Metabolism antibody; Signaling Transduction antibody

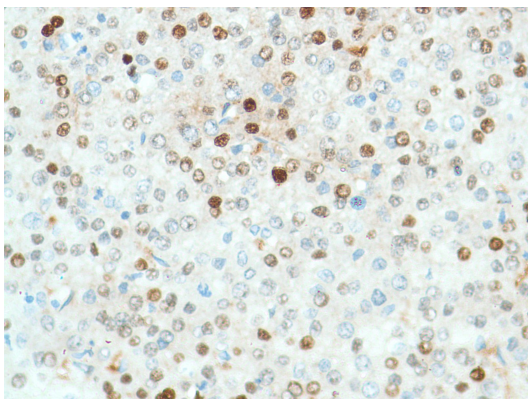
Cellular Localization Cytoplasm

Images



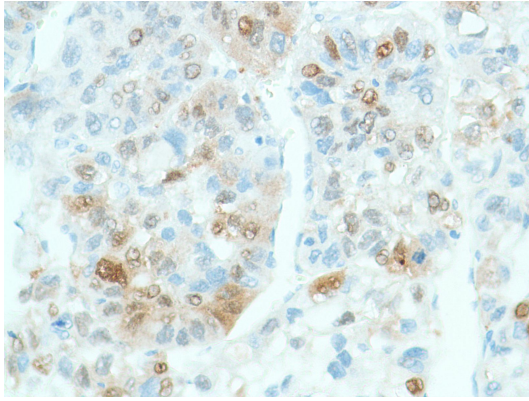
ARG52533 anti-Arginase-1 antibody [SP156] IHC-P image

Immunohistochemistry: Human Hepatocellular Carcinoma stained with Arginase-1 antibody [SP156] (ARG52533)



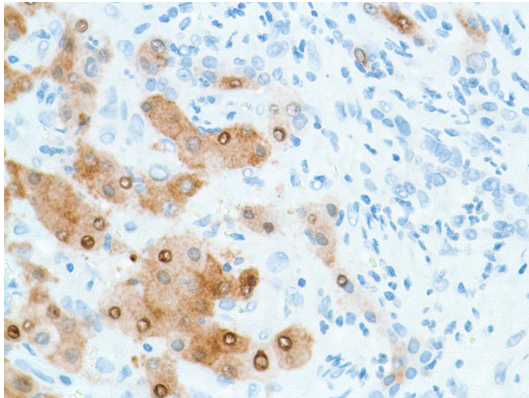
ARG52533 anti-Arginase-1 antibody [SP156] IHC-P image

Immunohistochemistry: Human Hepatocellular Carcinoma stained with Arginase-1 antibody [SP156] (ARG52533)



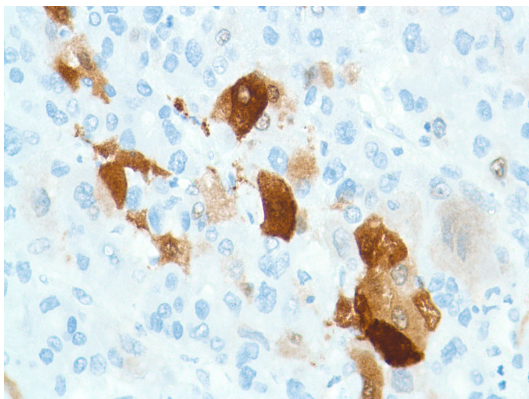
ARG52533 anti-Arginase-1 antibody [SP156] IHC-P image

Immunohistochemistry: Human Hepatocellular Carcinoma stained with Arginase-1 antibody [SP156] (ARG52533)



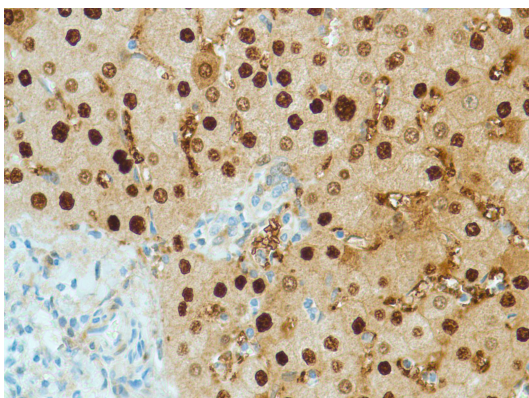
ARG52533 anti-Arginase-1 antibody [SP156] IHC-P image

Immunohistochemistry: Human Hepatocellular Carcinoma stained with Arginase-1 antibody [SP156] (ARG52533)



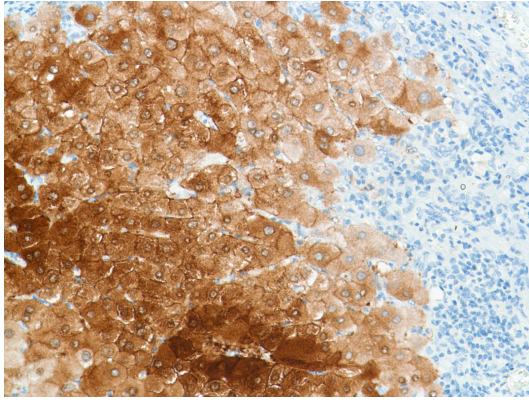
ARG52533 anti-Arginase-1 antibody [SP156] IHC-P image

Immunohistochemistry: Human Hepatocellular Carcinoma stained with Arginase-1 antibody [SP156] (ARG52533)



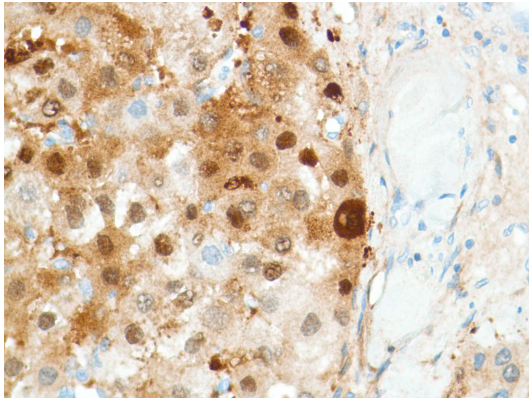
ARG52533 anti-Arginase-1 antibody [SP156] IHC-P image

Immunohistochemistry: Human Liver stained with Arginase-1 antibody [SP156] (ARG52533)



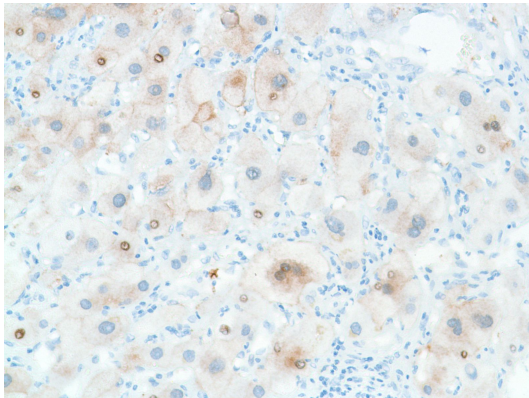
ARG52533 anti-Arginase-1 antibody [SP156] IHC-P image

Immunohistochemistry: Human Liver Cirrhosis stained with Arginase-1 antibody [SP156] (ARG52533)



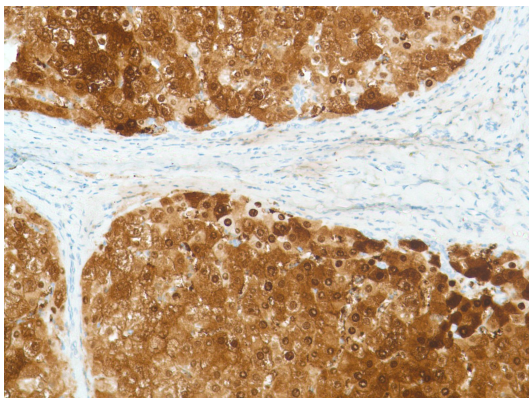
ARG52533 anti-Arginase-1 antibody [SP156] IHC-P image

Immunohistochemistry: Human Hepatocellular Carcinoma stained with Arginase-1 antibody [SP156] (ARG52533)



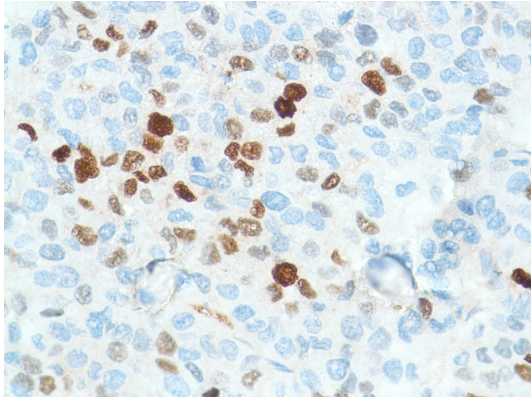
ARG52533 anti-Arginase-1 antibody [SP156] IHC-P image

Immunohistochemistry: Human Hepatocellular Carcinoma stained with Arginase-1 antibody [SP156] (ARG52533)



ARG52533 anti-Arginase-1 antibody [SP156] IHC-P image

Immunohistochemistry: Human Liver Cirrhosis stained with Arginase-1 antibody [SP156] (ARG52533)



ARG52533 anti-Arginase-1 antibody [SP156] IHC-P image

Immunohistochemistry: Human Hepatocellular Carcinoma stained with Arginase-1 antibody [SP156] (ARG52533)