

## ARG52489 anti-alpha smooth muscle Actin antibody [SP171]

Package: 500 µl  
Store at: -20°C

### Summary

Product Description	Rabbit Monoclonal antibody [SP171] recognizes alpha smooth muscle Actin (SMA)
Tested Reactivity	Hu
Tested Application	IHC-P, WB
Host	Rabbit
Clonality	Monoclonal
Clone	SP171
Isotype	IgG
Target Name	alpha smooth muscle Actin
Antigen Species	Human
Immunogen	Synthetic peptide near the N-terminus of human SMA protein.
Conjugation	Un-conjugated
Alternate Names	Cell growth-inhibiting gene 46 protein; MYMY5; ACTSA; Alpha-actin-2; Actin, aortic smooth muscle; AAT6

### Application Instructions

Predict Reactivity	Pig, Rat						
Application table	<table><thead><tr><th>Application</th><th>Dilution</th></tr></thead><tbody><tr><td>IHC-P</td><td>1:200</td></tr><tr><td>WB</td><td>1:50</td></tr></tbody></table>	Application	Dilution	IHC-P	1:200	WB	1:50
Application	Dilution						
IHC-P	1:200						
WB	1:50						
Application Note	* The dilutions indicate recommended starting dilutions and the optimal dilutions or concentrations should be determined by the scientist.						
Positive Control	Colon, HeLa Cell Lysate						
Calculated Mw	42 kDa						

### Properties

Form	Liquid
Purification	Purified by protein A/G
Buffer	PBS (pH 7.6), 1% BSA and < 0.1% Sodium azide
Preservative	< 0.1% Sodium azide
Stabilizer	1% BSA
Storage instruction	For continuous use, store undiluted antibody at 2-8°C for up to a week. For long-term storage, aliquot and store at -20°C or below. Storage in frost free freezers is not recommended. Avoid repeated

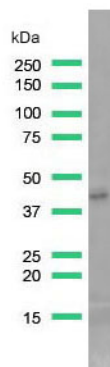
freeze/thaw cycles. Suggest spin the vial prior to opening. The antibody solution should be gently mixed before use.

**Note** For laboratory research only, not for drug, diagnostic or other use.

## Bioinformation

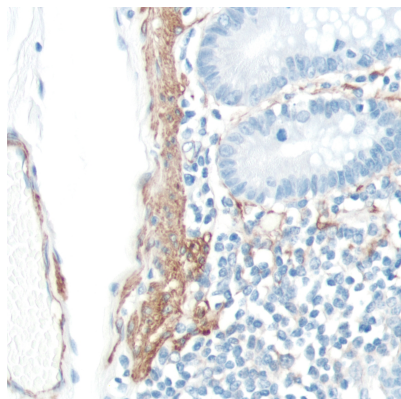
Database links	<a href="#">GeneID: 59 Human</a> <a href="#">Swiss-port # P62736 Human</a>
Background	Smooth muscle actin-alpha (SMA) is a cytoskeleton protein in smooth muscle cells and their derived tumors such as leiomyoma and leiomyosarcoma. It is also expressed in myoepithelial cells of the breast and salivary gland, but not in fibroblasts, striated muscle, and myocardium.
Highlight	Related products: <a href="#">alpha smooth muscle Actin antibodies; alpha smooth muscle Actin Duos / Panels; Anti-Rabbit IgG secondary antibodies;</a> Related news: <a href="#">Besides tumor suppression, what's p53 busy for during embryogenesis?</a>
Resrarch Area	Cell Biology and Cellular Response antibody; Controls and Markers antibody; Signaling Transduction antibody
Cellular Localization	Cytoplasm

## Images



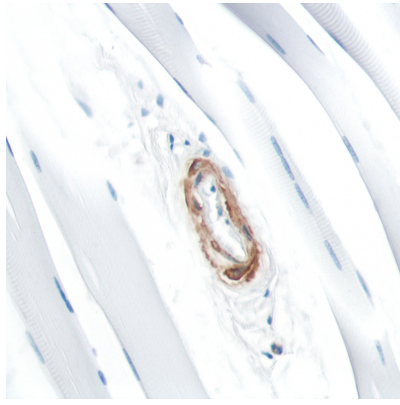
ARG52489 anti-Actin-Smooth Muscle (SMA) antibody [SP171] WB image

Western Blot: HeLa stained with Actin-Smooth Muscle (SMA) antibody [SP171] (ARG52489)



ARG52489 anti-Actin-Smooth Muscle (SMA) antibody [SP171] IHC-P image

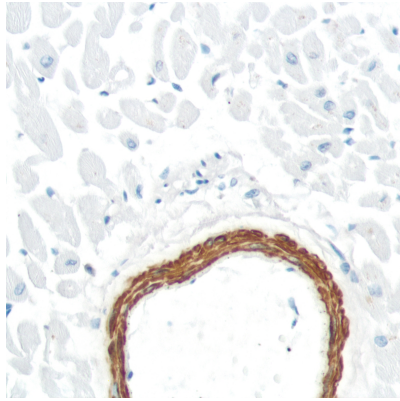
Immunohistochemistry: Human Colon stained with Actin-Smooth Muscle (SMA) antibody [SP171] (ARG52489)



ARG52489 anti-Actin-Smooth Muscle (SMA) antibody [SP171] IHC-P image

Immunohistochemistry: Human Skeletal Muscle stained with Actin-Smooth Muscle (SMA) antibody [SP171] (ARG52489)

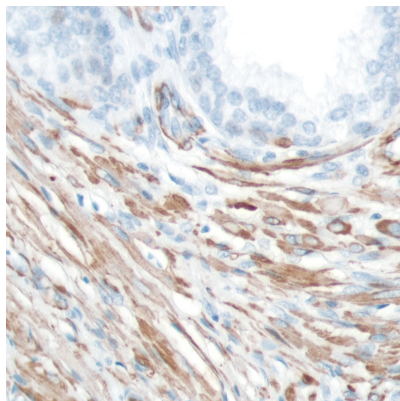
---



ARG52489 anti-Actin-Smooth Muscle (SMA) antibody [SP171] IHC-P image

Immunohistochemistry: Human Heart stained with Actin-Smooth Muscle (SMA) antibody [SP171] (ARG52489)

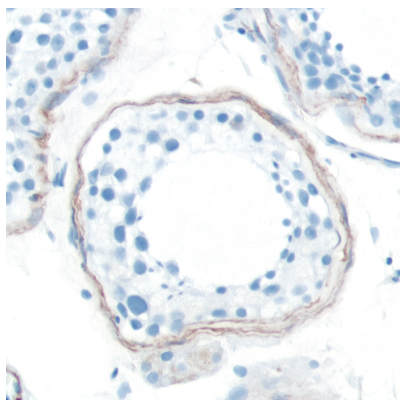
---



ARG52489 anti-Actin-Smooth Muscle (SMA) antibody [SP171] IHC-P image

Immunohistochemistry: Human Prostate stained with Actin-Smooth Muscle (SMA) antibody [SP171] (ARG52489)

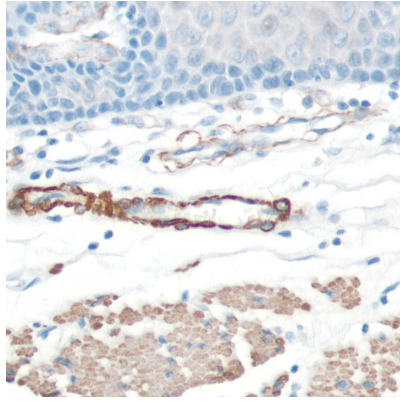
---



ARG52489 anti-Actin-Smooth Muscle (SMA) antibody [SP171] IHC-P image

Immunohistochemistry: Human Testis stained with Actin-Smooth Muscle (SMA) antibody [SP171] (ARG52489)

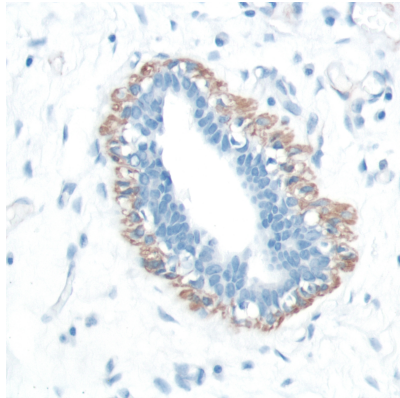
---



ARG52489 anti-Actin-Smooth Muscle (SMA) antibody [SP171] IHC-P image

Immunohistochemistry: Human Esophagus stained with Actin-Smooth Muscle (SMA) antibody [SP171] (ARG52489)

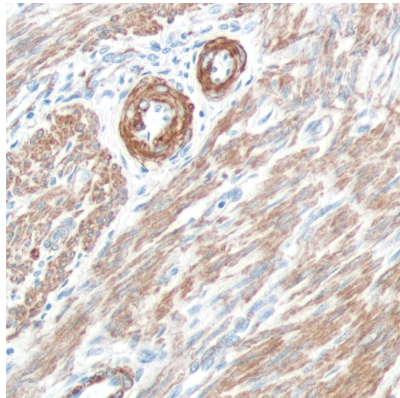
---



ARG52489 anti-Actin-Smooth Muscle (SMA) antibody [SP171] IHC-P image

Immunohistochemistry: Human Breast stained with Actin-Smooth Muscle (SMA) antibody [SP171] (ARG52489)

---



ARG52489 anti-Actin-Smooth Muscle (SMA) antibody [SP171] IHC-P image

Immunohistochemistry: Human Uterus stained with Actin-Smooth Muscle (SMA) antibody [SP171] (ARG52489)

---