

ARG52406 anti-RAB3 antibody

Package: 50 µl
Store at: -20°C

Summary

Product Description	Rabbit Polyclonal antibody recognizes RAB3
Tested Reactivity	Rat
Predict Reactivity	Hu, Ms, NHuPrm, Xenopus laevis
Tested Application	WB
Host	Rabbit
Clonality	Polyclonal
Isotype	IgG
Target Name	RAB3
Species	Rat
Immunogen	Synthetic peptide corresponding to amino acid residues from the N-terminal region conjugated to KLH
Conjugation	Un-conjugated
Alternate Names	Ras-related protein Rab-3A

Application Instructions

Application table	Application	Dilution
	WB	1:1000
Application Note	Specific for ~27k Rab3 protein. * The dilutions indicate recommended starting dilutions and the optimal dilutions or concentrations should be determined by the scientist.	

Properties

Form	Liquid
Purification	Affinity Purified
Buffer	10 mM HEPES (pH 7.5), 150 mM NaCl, 0.1 mg/ml BSA and 50% Glycerol
Stabilizer	0.1 mg/ml BSA, 50% Glycerol
Storage instruction	For continuous use, store undiluted antibody at 2-8°C for up to a week. For long-term storage, aliquot and store at -20°C. Storage in frost free freezers is not recommended. Avoid repeated freeze/thaw cycles. Suggest spin the vial prior to opening. The antibody solution should be gently mixed before use.
Note	For laboratory research only, not for drug, diagnostic or other use.

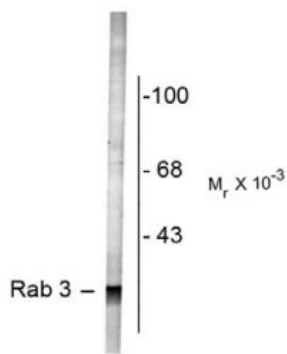
Bioinformation

Database links	GeneID: 25531 Rat
----------------	-----------------------------------

[Swiss-port # P63012 Rat](#)

Gene Symbol	RAB3A
Gene Full Name	RAB3A, member RAS oncogene family
Background	Rab proteins belong to the Ras small GTPase superfamily. The GTP-binding Rab3 subfamily has 4 known isoforms: 3A, 3B, 3C, and 3D (Schluter et al., 2004). These proteins are expressed in highest concentrations in brain and endocrine tissues and involved in regulated exocytosis of hormones and neurotransmitters (Coppola et al., 2002). Specifically, Rab3's are thought to play a key role in presynaptic vesicle trafficking and priming (Schluter et al., 2006).
Research Area	Signaling Transduction antibody
Calculated Mw	25 kDa

Images



ARG52406 anti-RAB3 antibody WB image

Western blot: Rat cortex lysate stained with ARG52406 anti-RAB3 antibody showing specific labeling of the ~27k Rab3 protein.