

ARG52323 anti-GRASP antibody

Package: 50 µl
Store at: -20°C

Summary

Product Description	Rabbit Polyclonal antibody recognizes GRASP
Tested Reactivity	Rat
Predict Reactivity	Hu, Ms, Bov, Dog
Tested Application	WB
Host	Rabbit
Clonality	Polyclonal
Isotype	IgG
Target Name	GRASP
Species	Rat
Immunogen	Synthetic peptide corresponding to amino acid residues from the C-terminal region conjugated to KLH
Conjugation	Un-conjugated
Alternate Names	GRASP-1; GRIP1-associated protein 1

Application Instructions

Application table	Application	Dilution
	WB	1:1,000
Application Note	Specific for the ~95k GRASP protein. * The dilutions indicate recommended starting dilutions and the optimal dilutions or concentrations should be determined by the scientist.	

Properties

Form	Liquid
Purification	Affinity Purified
Buffer	10 mM HEPES (pH 7.5), 150 mM NaCl, 0.1 mg/ml BSA and 50% Glycerol
Stabilizer	0.1 mg/ml BSA, 50% Glycerol
Storage instruction	For continuous use, store undiluted antibody at 2-8°C for up to a week. For long-term storage, aliquot and store at -20°C. Storage in frost free freezers is not recommended. Avoid repeated freeze/thaw cycles. Suggest spin the vial prior to opening. The antibody solution should be gently mixed before use.
Note	For laboratory research only, not for drug, diagnostic or other use.

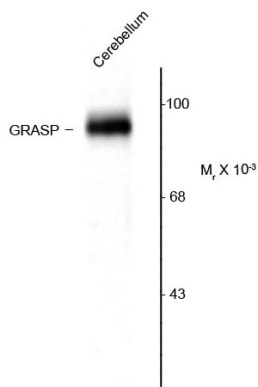
Bioinformation

Database links	GeneID: 116493 Rat
----------------	------------------------------------

[Swiss-port # Q9JHZ4 Rat](#)

Gene Symbol	GRIPAP1
Gene Full Name	GRIP1 associated protein 1
Background	PDZ domain-containing proteins, such as PSD-95 and GRIP are thought to play key roles in glutamate receptor plasticity. GRIP-associated proteins (GRASPs) that bind to distinct PDZ domains within GRIP also play key roles in regulation of glutamate receptor function. GRASP-1 is a neuronal rasGEF associated with GRIP and AMPA receptors in vivo (Scannevin and Huganir, 2000). Recent work suggests that GRASP-1 may regulate neuronal ras signaling and contribute to the regulation of AMPA receptor distribution by NMDA receptor activity (Ye et al., 2000).
Research Area	Neuroscience antibody; Signaling Transduction antibody
Calculated Mw	96 kDa
PTM	Proteolytically cleaved by caspase-3.

Images



ARG52323 anti-GRASP antibody WB image

Western Blot: rate cerebellar lysate showing specific immunolabeling of the ~95k GRASP protein stained with GRASP antibody (ARG52323).