

## ARG52259 anti-DOPA Decarboxylase antibody

Package: 50 µl  
Store at: -20°C

### Summary

Product Description	Rabbit Polyclonal antibody recognizes DOPA Decarboxylase
Tested Reactivity	Rat
Predict Reactivity	Bov
Tested Application	WB
Host	Rabbit
Clonality	Polyclonal
Isotype	IgG
Target Name	DOPA Decarboxylase
Species	Bovine
Immunogen	SDS denatured, recombinant bovine aromatic DOPA decarboxylase expressed in E. coli and purified from inclusion bodies
Conjugation	Un-conjugated
Alternate Names	DOPA decarboxylase; AADC; DDC; Aromatic-L-amino-acid decarboxylase; EC 4.1.1.28

### Application Instructions

Application table	Application	Dilution
	WB	1:1,000
Application Note	Specific for the ~55k DDC protein. * The dilutions indicate recommended starting dilutions and the optimal dilutions or concentrations should be determined by the scientist.	

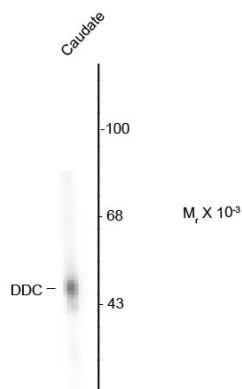
### Properties

Form	Liquid
Purification	Affinity Purified
Buffer	10 mM HEPES (pH 7.5), 150 mM NaCl, 0.1 mg/ml BSA and 50% Glycerol
Stabilizer	0.1 mg/ml BSA, 50% Glycerol
Storage instruction	For continuous use, store undiluted antibody at 2-8°C for up to a week. For long-term storage, aliquot and store at -20°C. Storage in frost free freezers is not recommended. Avoid repeated freeze/thaw cycles. Suggest spin the vial prior to opening. The antibody solution should be gently mixed before use.
Note	For laboratory research only, not for drug, diagnostic or other use.

### Bioinformation

Database links	<a href="#">GeneID: 24311 Rat</a> <a href="#">Swiss-port # P14173 Rat</a>
Gene Symbol	DDC
Gene Full Name	dopa decarboxylase (aromatic L-amino acid decarboxylase)
Background	DOPA decarboxylase (aromatic L-amino acid decarboxylase, AADC; DDC) catalyzes the second reaction in the biosynthesis of catecholamines and serotonin (Waymire and Haycock, 2002; Berry et al., 1996; Haycock et al., 2003). It is also involved in the biosynthesis of trace amines. DDC antibodies can therefore be used as markers for dopaminergic, noradrenergic and serotonergic neurons in a variety of applications including depression, schizophrenia, Parkinson's disease and drug abuse (Kish et al., 2001; Zhu et al., 2000; Zhu et al., 1999).
Research Area	Cancer antibody; Metabolism antibody; Neuroscience antibody
Calculated Mw	54 kDa

## Images



ARG52259 anti-DOPA Decarboxylase antibody WB image

Western Blot: 10  $\mu$ g of rat caudate lysate showing specific immunolabeling of the  $\sim$ 50 DOPA Decarboxylase protein stained with DOPA Decarboxylase antibody (ARG52259).