

ARG52252 anti-COX4 phospho (Ser58) antibody

Package: 50 µl
Store at: -20°C

Summary

Product Description	Rabbit Polyclonal antibody recognizes COX4 phospho (Ser58)
Tested Reactivity	Ms, Rat
Tested Application	WB
Host	Rabbit
Clonality	Polyclonal
Isotype	IgG
Target Name	COX4
Species	Mouse
Immunogen	KLH-conjugated phosphospecific peptide around Ser58 of Mouse COX IV.
Conjugation	Un-conjugated
Alternate Names	Cytochrome c oxidase polypeptide IV; COX4; COX4-1; COXIV; Cytochrome c oxidase subunit IV isoform 1; COX IV-1; Cytochrome c oxidase subunit 4 isoform 1, mitochondrial; COX4I1

Application Instructions

Application table	Application	Dilution
	WB	1:1,000

Application Note Specific for the ~17k COXIV-1 protein phosphorylated at Ser58. Immunolabeling is blocked by the phospho-peptide used as antigen but not by the corresponding dephospho-peptide.
* The dilutions indicate recommended starting dilutions and the optimal dilutions or concentrations should be determined by the scientist.

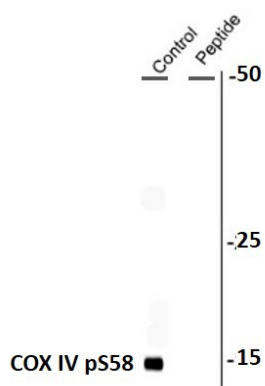
Properties

Form	Liquid
Purification	Affinity Purified
Buffer	10 mM HEPES (pH 7.5), 150 mM NaCl, 0.1 mg/ml BSA and 50% Glycerol
Stabilizer	0.1 mg/ml BSA, 50% Glycerol
Storage instruction	For continuous use, store undiluted antibody at 2-8°C for up to a week. For long-term storage, aliquot and store at -20°C. Storage in frost free freezers is not recommended. Avoid repeated freeze/thaw cycles. Suggest spin the vial prior to opening. The antibody solution should be gently mixed before use.
Note	For laboratory research only, not for drug, diagnostic or other use.

Bioinformation

Database links	GeneID: 12857 Mouse GeneID: 29445 Rat Swiss-port # P10888 Rat Swiss-port # P19783 Mouse
Gene Symbol	COX4i1
Gene Full Name	cytochrome c oxidase subunit IV isoform 1
Background	<p>Cytochrome c oxidase (COX) is the terminal enzyme of the mitochondrial respiratory chain. It is a multi-subunit enzyme complex that couples the transfer of electrons from cytochrome c to molecular oxygen and contributes to a proton electrochemical gradient across the inner mitochondrial membrane. The complex consists of 13 mitochondrial- and nuclear-encoded subunits. The mitochondrially-encoded subunits perform the electron transfer and proton pumping activities. The functions of the nuclear-encoded subunits are unknown but they may play a role in the regulation and assembly of the complex. This gene encodes the nuclear-encoded subunit IV isoform 1 of the human mitochondrial respiratory chain enzyme. It is located at the 3' of the NOC4 (neighbor of COX4) gene in a head-to-head orientation, and shares a promoter with it. Pseudogenes related to this gene are located on chromosomes 13 and 14. Alternative splicing results in multiple transcript variants encoding different isoforms. [provided by RefSeq, Jan 2016]</p>
Function	COX4 protein is one of the nuclear-coded polypeptide chains of cytochrome c oxidase, the terminal oxidase in mitochondrial electron transport. [UniProt]
Research Area	Cancer antibody; Controls and Markers antibody; Metabolism antibody; Signaling Transduction antibody; Loading Control antibody for Cytoplasmic Fractions; Cytochrome-C fractionation Study antibody; Mitochondrial Marker antibody
Calculated Mw	20 kDa

Images



ARG52252 anti-COX4 phospho (Ser58) antibody WB image

Western blot: Rat mitochondrial lysate stained with ARG52252 anti-COX4 phospho (Ser58) antibody showing specific signal around 17 kDa (Control). Immunolabeling is blocked by the phospho-peptide used as antigen (Peptide).