

ARG51429 anti-GLUT4 antibody

Package: 100 µl, 50 µl
Store at: -20°C

Summary

Product Description	Rabbit Polyclonal antibody recognizes GLUT4
Tested Reactivity	Hu, Ms, Rat
Tested Application	WB
Host	Rabbit
Clonality	Polyclonal
Isotype	IgG
Target Name	GLUT4
Species	Human
Immunogen	Peptide sequence around aa.501~ 505(E-Y-L-G-P) derived from Human Glut4.
Conjugation	Un-conjugated
Alternate Names	Glucose transporter type 4, insulin-responsive; GLUT4; GLUT-4; Solute carrier family 2, facilitated glucose transporter member 4

Application Instructions

Application table	Application	Dilution
	WB	1:500 - 1:1000
Application Note	* The dilutions indicate recommended starting dilutions and the optimal dilutions or concentrations should be determined by the scientist.	

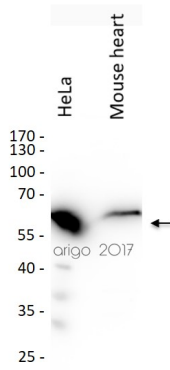
Properties

Form	Liquid
Purification	Antibodies were produced by immunizing rabbits with KLH-conjugated synthetic peptide. Antibodies were purified by affinity-chromatography using epitope-specific peptide.
Buffer	PBS (without Mg ²⁺ and Ca ²⁺ , pH 7.4), 150mM NaCl, 0.02% Sodium azide and 50% Glycerol.
Preservative	0.02% Sodium azide
Stabilizer	50% Glycerol
Concentration	1 mg/ml
Storage instruction	For continuous use, store undiluted antibody at 2-8°C for up to a week. For long-term storage, aliquot and store at -20°C. Storage in frost free freezers is not recommended. Avoid repeated freeze/thaw cycles. Suggest spin the vial prior to opening. The antibody solution should be gently mixed before use.
Note	For laboratory research only, not for drug, diagnostic or other use.

Bioinformation

Gene Symbol	SLC2A4
Gene Full Name	solute carrier family 2 (facilitated glucose transporter), member 4
Background	Insulin-regulated facilitative glucose transporter.
Function	Insulin-regulated facilitative glucose transporter. [UniProt]
Research Area	Cancer antibody; Cell Biology and Cellular Response antibody; Developmental Biology antibody; Metabolism antibody; Signaling Transduction antibody; Glucose uptake: Insulin Receptor Dependent Pathway Study antibody
Calculated Mw	55 kDa
PTM	Sumoylated.

Images



ARG51429 anti-GLUT4 antibody WB image

Western blot: 20 μ l of HeLa cell lysate and 30 μ l of Mouse heart lysate stained with ARG51429 anti-GLUT4 antibody at 1:500 dilution.