

ARG45556 anti-PLD5 antibody

Package: 50 µg
Store at: -20°C

Summary

Product Description	Rabbit Polyclonal antibody recognizes PLD5
Tested Reactivity	Hu, Ms, Rat
Tested Application	FACS, IHC-P, WB
Specificity	PLD5
Host	Rabbit
Clonality	Polyclonal
Isotype	IgG
Target Name	PLD5
Species	Human
Immunogen	Recombinant protein containing to human PLD5.
Conjugation	Un-conjugated
Alternate Names	PLD5; Phospholipase D Family Member 5; Inactive Phosphatidylcholine-Hydrolyzing Phospholipase D5; Inactive Choline Phosphatase 5; Inactive Phospholipase D5; Inactive PLD 5; FLJ40773; Phospholipase D Family, Member 5; PLDC; PLDc

Application Instructions

Application table	Application	Dilution
	FACS	1 - 3 µg/10 ⁶ cells
	IHC-P	2-5 µg/ml
	WB	0.25-0.5 µg/ml
Application Note	* The dilutions indicate recommended starting dilutions and the optimal dilutions or concentrations should be determined by the scientist.	
Observed Size	69 kDa	

Properties

Form	Powder
Purification	Affinity purified
Buffer	0.2% Na ₂ HPO ₄ , 0.9% NaCl and 4% Trehalose.
Stabilizer	4% Trehalose
Concentration	0.5 mg/ml
Storage instruction	For continuous use, store undiluted antibody at 2-8°C for up to a week. For long-term storage, aliquot and store at -20°C or below. Storage in frost free freezers is not recommended. Avoid repeated freeze/thaw cycles. Suggest spin the vial prior to opening. The antibody solution should be gently mixed

before use.

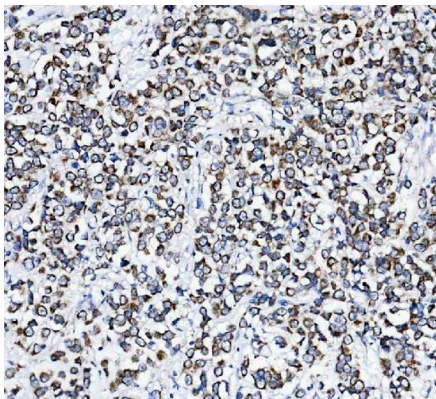
Note

For laboratory research only, not for drug, diagnostic or other use.

Bioinformation

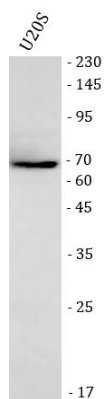
Gene Symbol	PLD5
Gene Full Name	Phospholipase D Family Member 5
Background	Predicted to enable catalytic activity. Predicted to be located in membrane. [provided by Alliance of Genome Resources, Feb 2025]
Calculated Mw	61 kDa
PTM	Glycoprotein. [UniProt]
Cellular Localization	Membrane. [UniProt]

Images



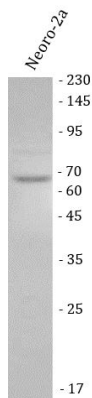
ARG45556 anti-PLD5 antibody IHC-P image

Immunohistochemistry: Human breast cancer stained with ARG45556 anti-PLD5 antibody at 2 µg/ml dilution.



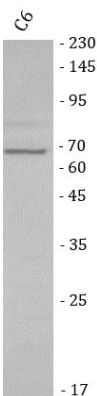
ARG45556 anti-PLD5 antibody WB image

Western blot: U2OS stained with ARG45556 anti-PLD5 antibody at 0.5 µg/ml dilution.



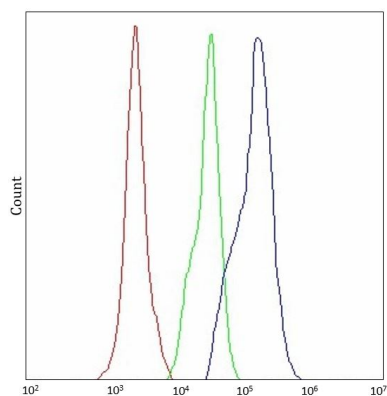
ARG45556 anti-PLD5 antibody WB image

Western blot: Neoro-2a stained with ARG45556 anti-PLD5 antibody at 0.5 $\mu\text{g/ml}$ dilution.



ARG45556 anti-PLD5 antibody WB image

Western blot: C6 stained with ARG45556 anti-PLD5 antibody at 0.5 $\mu\text{g/ml}$ dilution.



ARG45556 anti-PLD5 antibody FACS image

Flow Cytometry: SH-SY5Y stained with ARG45556 anti-PLD5 antibody at 1 $\mu\text{g}/10^6$ cells dilution.



ARG45556 anti-PLD5 antibody IHC-P image

Immunohistochemistry: Rat cerebellum stained with ARG45556 anti-PLD5 antibody at 2 $\mu\text{g/ml}$ dilution.



ARG45556 anti-PLD5 antibody IHC-P image

Immunohistochemistry: Mouse cerebellum stained with ARG45556 anti-PLD5 antibody at 2 µg/ml dilution.