

## ARG45406 anti-AATF antibody

Package: 50 µg  
Store at: -20°C

### Summary

Product Description	Rabbit Polyclonal antibody recognizes AATF
Tested Reactivity	Hu, Ms, Rat
Tested Application	ICC/IF, IHC-P, WB
Host	Rabbit
Clonality	Polyclonal
Isotype	IgG
Target Name	AATF
Species	Human
Immunogen	Recombinant protein containing to human AATF.
Conjugation	Un-conjugated
Alternate Names	BFR2; Apoptosis-antagonizing transcription factor; CHE1; CHE-1; Rb-binding protein Che-1; Protein AATF; DED

### Application Instructions

Application table	Application	Dilution
	ICC/IF	5 µg/ml
	IHC-P	1-2 µg/ml
	WB	0.25-0.5 µg/ml
Application Note	* The dilutions indicate recommended starting dilutions and the optimal dilutions or concentrations should be determined by the scientist.	
Observed Size	95 kDa	

### Properties

Form	Powder
Purification	Affinity purified
Buffer	0.2% Na <sub>2</sub> HPO <sub>4</sub> , 0.9% NaCl and 4% Trehalose.
Stabilizer	4% Trehalose
Concentration	0.5 mg/ml
Storage instruction	For continuous use, store undiluted antibody at 2-8°C for up to a week. For long-term storage, aliquot and store at -20°C or below. Storage in frost free freezers is not recommended. Avoid repeated freeze/thaw cycles. Suggest spin the vial prior to opening. The antibody solution should be gently mixed before use.

**Note**

For laboratory research only, not for drug, diagnostic or other use.

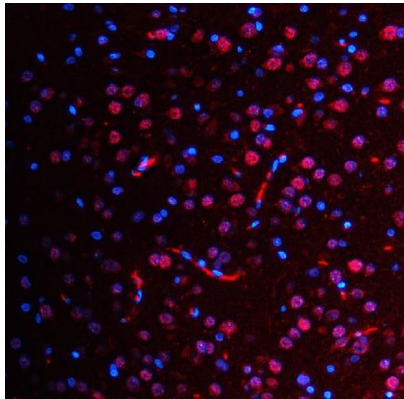
## Bioinformation

---

Gene Symbol	AATF
Gene Full Name	apoptosis antagonizing transcription factor
Background	The protein encoded by this gene was identified on the basis of its interaction with MAP3K12/DLK, a protein kinase known to be involved in the induction of cell apoptosis. This gene product contains a leucine zipper, which is a characteristic motif of transcription factors, and was shown to exhibit strong transactivation activity when fused to Gal4 DNA binding domain. Overexpression of this gene interfered with MAP3K12 induced apoptosis. [provided by RefSeq, Jul 2008]
Function	Part of the small subunit (SSU) processome, first precursor of the small eukaryotic ribosomal subunit. During the assembly of the SSU processome in the nucleolus, many ribosome biogenesis factors, an RNA chaperone and ribosomal proteins associate with the nascent pre-rRNA and work in concert to generate RNA folding, modifications, rearrangements and cleavage as well as targeted degradation of pre-ribosomal RNA by the RNA exosome. [UniProt]
Calculated Mw	63 kDa
PTM	Hyperphosphorylated during the G1/S phase transition. [UniProt]
Cellular Localization	Nucleus. [UniProt]

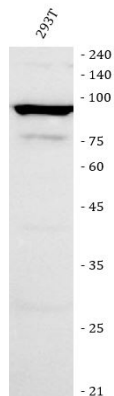
## Images

---



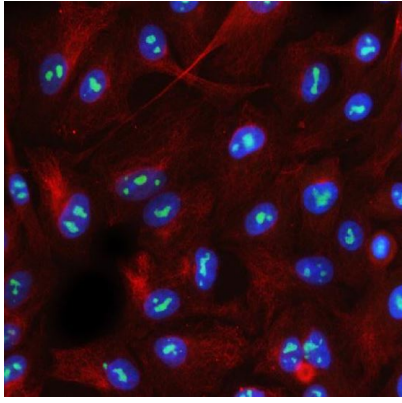
ARG45406 anti-AATF antibody ICC/IF image

Immunofluorescence: A549 stained with ARG45406 anti-AATF antibody at 5 µg/ml dilution.



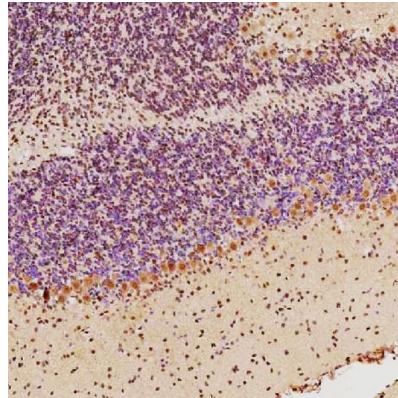
ARG45406 anti-AATF antibody WB image

Western blot: 293T stained with ARG45406 anti-AATF antibody at 0.5 µg/ml dilution.



ARG45406 anti-AATF antibody ICC/IF image

Immunofluorescence: Rat brain stained with ARG45406 anti-AATF antibody at 5  $\mu\text{g}/\text{ml}$  dilution.



ARG45406 anti-AATF antibody IHC-P image

Immunohistochemistry: Mouse cerebellum stained with ARG45406 anti-AATF antibody at 2  $\mu\text{g}/\text{ml}$  dilution.