

ARG45394 anti-MICS1 / GHITM antibody

Package: 50 µg
Store at: -20°C

Summary

Product Description	Rabbit Polyclonal antibody recognizes MICS1 / GHITM
Tested Reactivity	Hu, Ms, Rat
Tested Application	FACS, ICC/IF, IHC-P, WB
Host	Rabbit
Clonality	Polyclonal
Isotype	IgG
Target Name	MICS1 / GHITM
Species	Human
Immunogen	Recombinant protein containing to human MICS1 / GHITM.
Conjugation	Un-conjugated
Alternate Names	Dermal papilla-derived protein 2; MICS1; PTD010; HSPC282; My021; Transmembrane BAX inhibitor motif-containing protein 5; DERP2; TMBIM5; Growth hormone-inducible transmembrane protein; Mitochondrial morphology and cristae structure 1

Application Instructions

Application table	Application	Dilution
	FACS	1 - 3 µg/10 ⁶ cells
	ICC/IF	5 µg/ml
	IHC-P	2-5 µg/ml
	WB	0.25-0.5 µg/ml
Application Note	* The dilutions indicate recommended starting dilutions and the optimal dilutions or concentrations should be determined by the scientist.	
Observed Size	37 kDa	

Properties

Form	Powder
Purification	Affinity purified
Buffer	0.2% Na ₂ HPO ₄ , 0.9% NaCl and 4% Trehalose.
Stabilizer	4% Trehalose
Concentration	0.5 mg/ml
Storage instruction	For continuous use, store undiluted antibody at 2-8°C for up to a week. For long-term storage, aliquot and store at -20°C or below. Storage in frost free freezers is not recommended. Avoid repeated freeze/thaw cycles. Suggest spin the vial prior to opening. The antibody solution should be gently mixed

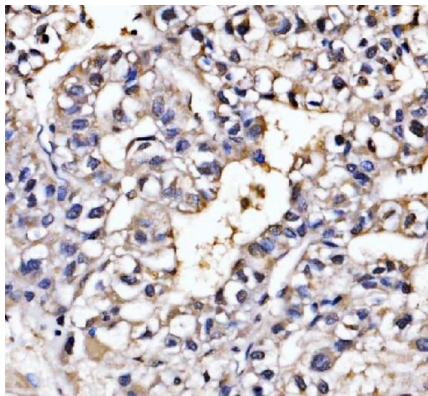
before use.

Note For laboratory research only, not for drug, diagnostic or other use.

Bioinformation

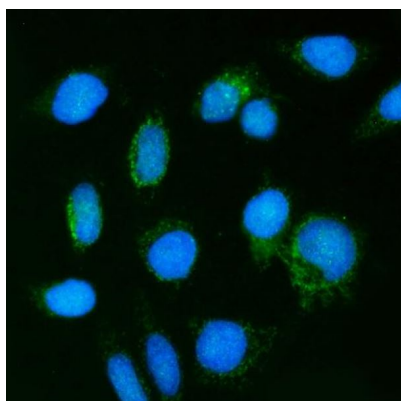
Gene Symbol	GHITM
Gene Full Name	growth hormone inducible transmembrane protein
Background	Enables calcium:proton antiporter activity. Involved in calcium export from the mitochondrion; inner mitochondrial membrane organization; and negative regulation of release of cytochrome c from mitochondria. Located in mitochondrial inner membrane. [provided by Alliance of Genome Resources, Nov 2024]
Function	Required for the mitochondrial tubular network and cristae organization. Involved in apoptotic release of cytochrome c. [UniProt]
Calculated Mw	37 kDa
PTM	Plays an important role in maintenance of mitochondrial morphology and in mediating either calcium or potassium/proton antiport. [UniProt]
Cellular Localization	Mitochondrion inner membrane. [UniProt]

Images



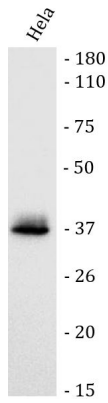
ARG45394 anti-MICS1 / GHITM antibody IHC-P image

Immunohistochemistry: Human liver cancer stained with ARG45394 anti-MICS1 / GHITM antibody at 2 µg/ml dilution.



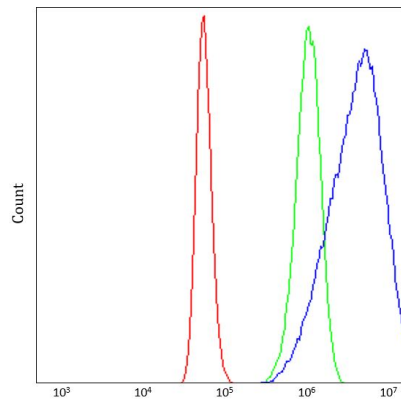
ARG45394 anti-MICS1 / GHITM antibody ICC/IF image

Immunofluorescence: HEP3B stained with ARG45394 anti-MICS1 / GHITM antibody at 5 µg/ml dilution.



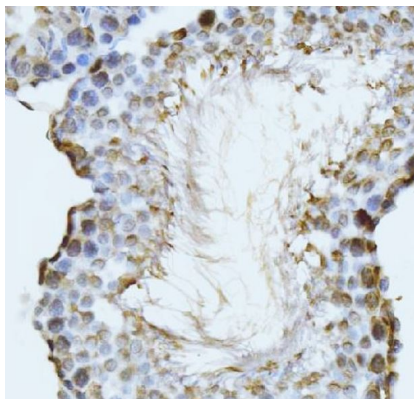
ARG45394 anti-MICS1 / GHITM antibody WB image

Western blot: HeLa stained with ARG45394 anti-MICS1 / GHITM antibody at 0.5 $\mu\text{g}/\text{ml}$ dilution.



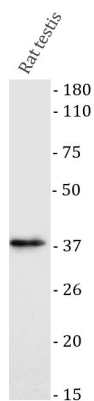
ARG45394 anti-MICS1 / GHITM antibody FACS image

Flow Cytometry: A431 stained with ARG45394 anti-MICS1 / GHITM antibody at 1 $\mu\text{g}/10^6$ cells dilution.



ARG45394 anti-MICS1 / GHITM antibody IHC-P image

Immunohistochemistry: Rat testis stained with ARG45394 anti-MICS1 / GHITM antibody at 2 $\mu\text{g}/\text{ml}$ dilution.



ARG45394 anti-MICS1 / GHITM antibody WB image

Western blot: Rat testis stained with ARG45394 anti-MICS1 / GHITM antibody at 0.5 $\mu\text{g}/\text{ml}$ dilution.

ARG45394 anti-MICS1 / GHITM antibody WB image

Western blot: Mouse testis stained with ARG45394 anti-MICS1 / GHITM antibody at 0.5 µg/ml dilution.

