

ARG45367 anti-Kallikrein 15 antibody [5Z12]

Package: 50 µg
Store at: -20°C

Summary

Product Description	Mouse Monoclonal antibody [5Z12] recognizes Kallikrein 15
Tested Reactivity	Hu
Tested Application	IHC-P
Host	Mouse
Clonality	Monoclonal
Clone	5Z12
Isotype	IgG2
Target Name	Kallikrein 15
Species	Human
Immunogen	Recombinant Human Kallikrein 15.
Conjugation	Un-conjugated
Alternate Names	KLK15; Kallikrein Related Peptidase 15; Prostinogen; HSRNASPH; ACO; Kallikrein-15; ACO Protease; Kallikrein-Like Serine Protease; Kallikrein 15; EC 3.4.21.-; EC 3.4.21.4; EC 3.4.21

Application Instructions

Application table	Application	Dilution
	IHC-P	Assay-dependent

Application Note * The dilutions indicate recommended starting dilutions and the optimal dilutions or concentrations should be determined by the scientist.

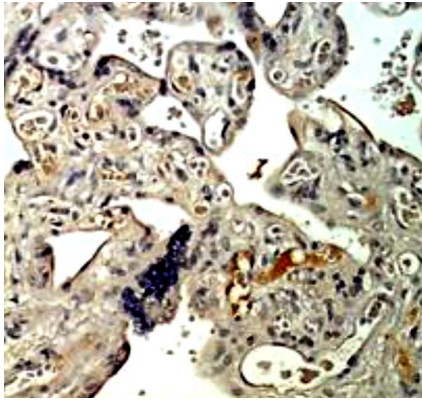
Properties

Form	Powder
Purification	Protein G chromatography
Buffer	PBS
Reconstitution	PBS
Concentration	0.2 mg/ml
Storage instruction	For continuous use, store undiluted antibody at 2-8°C for up to a week. For long-term storage, aliquot and store at -20°C or below. Storage in frost free freezers is not recommended. Avoid repeated freeze/thaw cycles. Suggest spin the vial prior to opening. The antibody solution should be gently mixed before use.
Note	For laboratory research only, not for drug, diagnostic or other use.

Bioinformation

Gene Symbol	KLK15
Gene Full Name	Kallikrein Related Peptidase 15
Background	Kallikreins are a subgroup of serine proteases having diverse physiological functions. Growing evidence suggests that many kallikreins are implicated in carcinogenesis and some have potential as novel cancer and other disease biomarkers. This gene is one of the fifteen kallikrein subfamily members located in a cluster on chromosome 19. In prostate cancer, this gene has increased expression, which indicates its possible use as a diagnostic or prognostic marker for prostate cancer. The gene contains multiple polyadenylation sites and alternative splicing results in multiple transcript variants encoding distinct isoforms. [provided by RefSeq, Jul 2008]
Function	Protease whose physiological substrate is not yet known.
Calculated Mw	28 kDa
PTM	Disulfide bond; Glycoprotein; Zymogen. [UniProt]
Cellular Localization	Secreted. [UniProt]

Images



ARG45367 anti-Kallikrein 15 antibody [5Z12] IHC-P image

Immunohistochemistry: Human placental stained with ARG45367 anti-Kallikrein 15 antibody [5Z12].