

ARG45365 anti-KLK7 antibody [5J28]

Package: 50 µg
Store at: -20°C

Summary

Product Description	Mouse Monoclonal antibody [5J28] recognizes KLK7
Tested Reactivity	Hu
Tested Application	IHC-P
Host	Mouse
Clonality	Monoclonal
Clone	5J28
Isotype	IgG2
Target Name	KLK7
Species	Human
Immunogen	Recombinant Human KLK7.
Conjugation	Un-conjugated
Alternate Names	KLRC1; NKG2; NKG2A; CD159A

Application Instructions

Application table	Application	Dilution
	IHC-P	Assay-dependent

Application Note * The dilutions indicate recommended starting dilutions and the optimal dilutions or concentrations should be determined by the scientist.

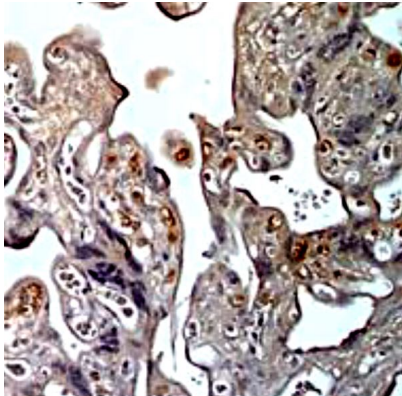
Properties

Form	Powder
Purification	Protein G chromatography
Buffer	PBS
Reconstitution	PBS
Concentration	0.2 mg/ml
Storage instruction	For continuous use, store undiluted antibody at 2-8°C for up to a week. For long-term storage, aliquot and store at -20°C or below. Storage in frost free freezers is not recommended. Avoid repeated freeze/thaw cycles. Suggest spin the vial prior to opening. The antibody solution should be gently mixed before use.
Note	For laboratory research only, not for drug, diagnostic or other use.

Bioinformation

Gene Symbol	KLK7
Gene Full Name	Kallikrein Related Peptidase 7
Background	<p>This gene encodes a member of the kallikrein subfamily of serine proteases. These enzymes have diverse physiological functions and many kallikrein genes are biomarkers for cancer. The encoded protein has chymotrypsin-like activity and plays a role in the proteolysis of intercellular cohesive structures that precedes desquamation, the shedding of the outermost layer of the epidermis. The encoded protein may play a role in cancer invasion and metastasis, and increased expression of this gene is associated with unfavorable prognosis and progression of several types of cancer. Polymorphisms in this gene may play a role in the development of atopic dermatitis. Alternatively spliced transcript variants encoding multiple isoforms have been observed for this gene, which is one of fifteen kallikrein subfamily members located in a gene cluster on chromosome 19.</p>
Function	<p>May catalyze the degradation of intercellular cohesive structures in the cornified layer of the skin in the continuous shedding of cells from the skin surface. Specific for amino acid residues with aromatic side chains in the P1 position. Cleaves insulin A chain at '14-Tyr- -Gln-15' and insulin B chain at '6-Leu- -Cys-7', '16-Tyr- -Leu-17', '25-Phe- -Tyr-26' and '26-Tyr- -Thr-27'. Could play a role in the activation of precursors to inflammatory cytokines.</p>
Calculated Mw	27 kDa
PTM	Disulfide bond, Glycoprotein, Zymogen. [UniProt]
Cellular Localization	Secreted. [UniProt]

Images



ARG45365 anti-KLK7 antibody [5J28] IHC-P image

Immunohistochemistry: Human placental stained with ARG45365 anti-KLK7 antibody [5J28].