

ARG45344 anti-CXCL16 antibody [15Q2]

Package: 50 µg
Store at: -20°C

Summary

Product Description	Rat Monoclonal antibody [15Q2] recognizes CXCL16
Tested Reactivity	Ms
Tested Application	IHC-P
Host	Rat
Clonality	Monoclonal
Clone	15Q2
Isotype	IgG2
Target Name	CXCL16
Species	Mouse
Immunogen	Recombinant Mouse CXCL16.
Conjugation	Un-conjugated
Alternate Names	Transmembrane chemokine CXCL16; CXCLG16; C-X-C motif chemokine 16; SRPSOX; Scavenger receptor for phosphatidylserine and oxidized low density lipoprotein; SR-PSOX; Small-inducible cytokine B16

Application Instructions

Application table	Application	Dilution
	IHC-P	1:100 - 1:200
Application Note	* The dilutions indicate recommended starting dilutions and the optimal dilutions or concentrations should be determined by the scientist.	

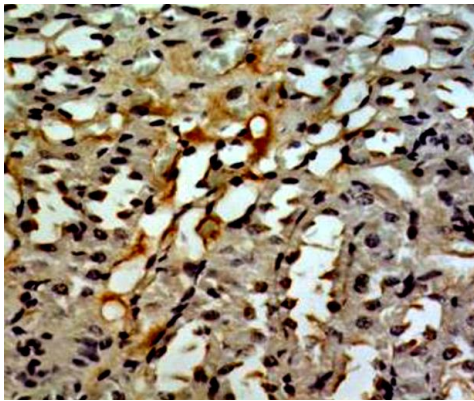
Properties

Form	Powder
Purification	Protein G/A chromatography
Buffer	PBS
Reconstitution	PBS
Concentration	0.2 mg/ml
Storage instruction	For continuous use, store undiluted antibody at 2-8°C for up to a week. For long-term storage, aliquot and store at -20°C or below. Storage in frost free freezers is not recommended. Avoid repeated freeze/thaw cycles. Suggest spin the vial prior to opening. The antibody solution should be gently mixed before use.
Note	For laboratory research only, not for drug, diagnostic or other use.

Bioinformation

Gene Symbol	Cxcl16
Gene Full Name	chemokine (C-X-C motif) ligand 16
Background	Enables chemokine activity. Involved in several processes, including positive regulation of cell growth; response to tumor necrosis factor; and response to type II interferon. Located in extracellular space. Biomarker of COVID-19 and systemic scleroderma. [provided by Alliance of Genome Resources, Nov 2024]
Function	Induces a strong chemotactic response. Induces calcium mobilization. Binds to CXCR6/Bonzo. Also acts as a scavenger receptor on macrophages, which specifically binds to OxLDL (oxidized low density lipoprotein), suggesting that it may be involved in pathophysiology such as atherogenesis. [UniProt]
Calculated Mw	28 kDa
PTM	Disulfide bond; Glycoprotein. [UniProt]
Cellular Localization	Membrane. [UniProt]

Images



ARG45344 anti-CXCL16 antibody [15Q2] IHC-P image

Immunohistochemistry: Mouse kidney stained with ARG45344 anti-CXCL16 antibody [15Q2].