

## ARG45342 anti-CRIM1 antibody [16G1]

Package: 50 µg  
Store at: -20°C

### Summary

Product Description	Mouse Monoclonal antibody [16G1] recognizes CRIM1
Tested Reactivity	Hu
Tested Application	IHC-P
Host	Mouse
Clonality	Monoclonal
Clone	16G1
Isotype	IgG1
Target Name	CRIM1
Species	Human
Immunogen	Recombinant Human CRIM1.
Conjugation	Un-conjugated
Alternate Names	CRIM1; Cysteine Rich Transmembrane BMP Regulator 1; S52; Cysteine Rich Transmembrane BMP Regulator 1 (Chordin-Like); Cysteine-Rich Repeat-Containing Protein S52; Cysteine-Rich Motor Neuron 1 Protein; CRIM-1; Cysteine-Rich Motor Neuron 1

### Application Instructions

Application table	Application	Dilution
	IHC-P	Assay-dependent
Application Note	* The dilutions indicate recommended starting dilutions and the optimal dilutions or concentrations should be determined by the scientist.	

### Properties

Form	Powder
Purification	Protein G chromatography
Buffer	PBS
Reconstitution	PBS
Concentration	0.2 mg/ml
Storage instruction	For continuous use, store undiluted antibody at 2-8°C for up to a week. For long-term storage, aliquot and store at -20°C or below. Storage in frost free freezers is not recommended. Avoid repeated freeze/thaw cycles. Suggest spin the vial prior to opening. The antibody solution should be gently mixed before use.
Note	For laboratory research only, not for drug, diagnostic or other use.

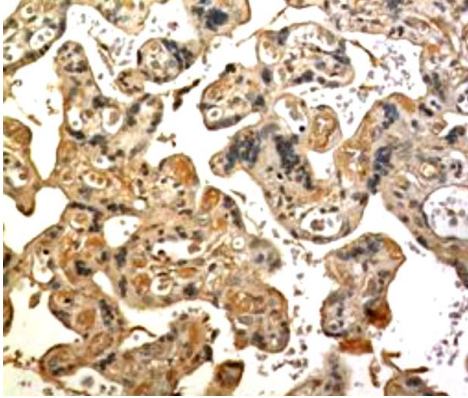
## Bioinformation

---

Gene Symbol	CRIM1
Gene Full Name	Cysteine Rich Transmembrane BMP Regulator 1
Background	This gene encodes a transmembrane protein containing six cysteine-rich repeat domains and an insulin-like growth factor-binding domain. The encoded protein may play a role in tissue development through interactions with members of the transforming growth factor beta family, such as bone morphogenetic proteins. [provided by RefSeq, Nov 2010]
Function	May play a role in CNS development by interacting with growth factors implicated in motor neuron differentiation and survival. May play a role in capillary formation and maintenance during angiogenesis. Modulates BMP activity by affecting its processing and delivery to the cell surface. [UniProt]
Calculated Mw	114 kDa
PTM	Disulfide bond; Glycoprotein; Phosphoprotein. [UniProt]
Cellular Localization	Cell membrane; Membrane; Secreted. [UniProt]

## Images

---



ARG45342 anti-CRIM1 antibody [16G1] IHC-P image

Immunohistochemistry: Human placental stained with ARG45342 anti-CRIM1 antibody [16G1].

---