

ARG45311 anti-RTF1 antibody

Package: 50 µg
Store at: -20°C

Summary

Product Description	Polyclonal antibody recognizes RTF1
Tested Reactivity	Hu, Mk
Tested Application	FACS, IHC-P, WB
Host	Rabbit
Clonality	Polyclonal
Isotype	Rabbit IgG
Target Name	RTF1
Species	Human
Immunogen	Recombinant protein containing to human RTF1.
Conjugation	Un-conjugated
Alternate Names	RTF1; RTF1 Homolog, Paf1/RNA Polymerase II Complex Component; KIAA0252; RNA Polymerase-Associated Protein RTF1 Homolog; Rtf1, Paf1/RNA Polymerase II Complex Component, Homolog (S. Cerevisiae); Rtf1, Paf1/RNA Polymerase II Complex Component, Homolog; Ortholog Of Mouse Gene Trap Locus 7; GTL7

Application Instructions

Application table	Application	Dilution
	FACS	1 - 3 µg/10 ⁶ cells
	IHC-P	2-5 µg/ml
	WB	0.25-0.5 µg/ml
Application Note	* The dilutions indicate recommended starting dilutions and the optimal dilutions or concentrations should be determined by the scientist.	
Observed Size	100 kDa	

Properties

Form	Liquid
Purification	Affinity purification with immunogen.
Buffer	0.2% Na ₂ HPO ₄ , 0.9% NaCl and 4% Trehalose.
Stabilizer	4% Trehalose
Concentration	0.5 mg/ml
Storage instruction	For continuous use, store undiluted antibody at 2-8°C for up to a week. For long-term storage, aliquot and store at -20°C or below. Storage in frost free freezers is not recommended. Avoid repeated freeze/thaw cycles. Suggest spin the vial prior to opening. The antibody solution should be gently mixed

before use.

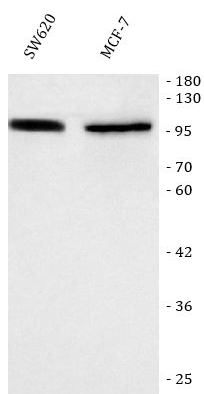
Note

For laboratory research only, not for drug, diagnostic or other use.

Bioinformation

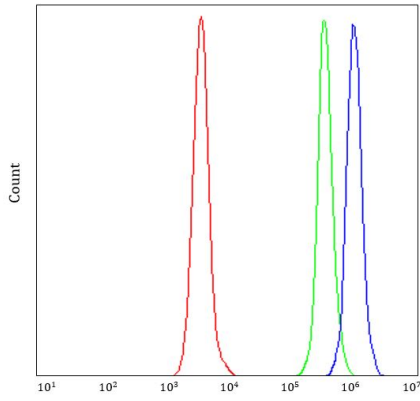
Gene Symbol	RTF1
Gene Full Name	RTF1 Homolog, Paf1/RNA Polymerase II Complex Component
Background	This locus may represent a gene involved in regulation of transcription elongation and chromatin remodeling, based on studies of similar proteins in other organisms. The encoded protein may bind single-stranded DNA. [provided by RefSeq, Sep 2010]
Function	Component of the PAF1 complex (PAF1C) which has multiple functions during transcription by RNA polymerase II and is implicated in regulation of development and maintenance of embryonic stem cell pluripotency. PAF1C associates with RNA polymerase II through interaction with POLR2A CTD non-phosphorylated and 'Ser-2'- and 'Ser-5'-phosphorylated forms and is involved in transcriptional elongation, acting both independently and synergistically with TCEA1 and in cooperation with the DSIF complex and HTATSF1. PAF1C is required for transcription of Hox and Wnt target genes. PAF1C is involved in hematopoiesis and stimulates transcriptional activity of KMT2A/MLL1; it promotes leukemogenesis through association with KMT2A/MLL1-rearranged oncoproteins, such as KMT2A/MLL1-MLLT3/AF9 and KMT2A/MLL1-MLLT1/ENL. PAF1C is involved in histone modifications such as ubiquitination of histone H2B and methylation on histone H3 'Lys-4' (H3K4me3). PAF1C recruits the RNF20/40 E3 ubiquitin-protein ligase complex and the E2 enzyme UBE2A or UBE2B to chromatin which mediate monoubiquitination of 'Lys-120' of histone H2B (H2BK120ub1); UB2A/B-mediated H2B ubiquitination is proposed to be coupled to transcription. PAF1C is involved in mRNA 3' end formation probably through association with cleavage and poly(A) factors. In case of infection by influenza A strain H3N2, PAF1C associates with viral NS1 protein, thereby regulating gene transcription. Binds single-stranded DNA. Required for maximal induction of heat-shock genes. Required for the trimethylation of histone H3 'Lys-4' (H3K4me3) on genes involved in stem cell pluripotency; this function is synergistic with CXXC1 indicative for an involvement of a SET1 complex . [UniProt]
Calculated Mw	80 kDa
PTM	Phosphoprotein. [UniProt]
Cellular Localization	Nucleus. [UniProt]

Images



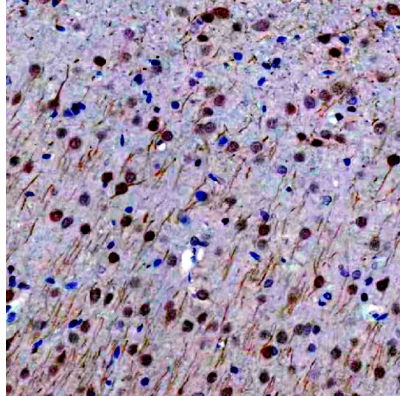
ARG45311 anti-RTF1 antibody WB image

Western blot: SW620 and MCF-7 stained with ARG45311 anti-RTF1 antibody at 0.5 µg/ml dilution.



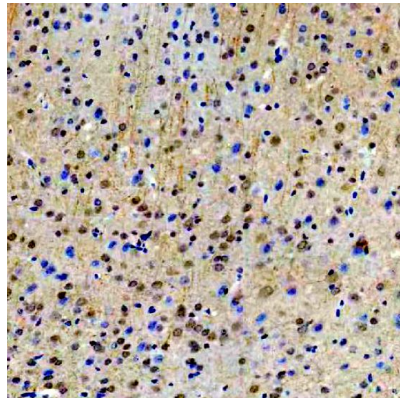
ARG45311 anti-RTF1 antibody FACS image

Flow Cytometry: Daudi stained with ARG45311 anti-RTF1 antibody at 1 µg/10⁶ cells dilution.



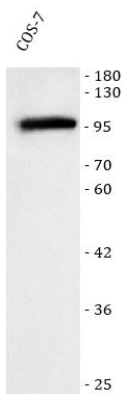
ARG45311 anti-RTF1 antibody IHC-P image

Immunohistochemistry: Rat brain stained with ARG45311 anti-RTF1 antibody at 2 µg/ml dilution.



ARG45311 anti-RTF1 antibody IHC-P image

Immunohistochemistry: Mouse brain stained with ARG45311 anti-RTF1 antibody at 2 µg/ml dilution.



ARG45311 anti-RTF1 antibody WB image

Western blot: COS-7 stained with ARG45311 anti-RTF1 antibody at 0.5 µg/ml dilution.