

## ARG45307 anti-RPS15A antibody

Package: 50 µg  
Store at: -20°C

### Summary

Product Description	Polyclonal antibody recognizes RPS15A
Tested Reactivity	Hu, Ms, Rat
Tested Application	FACS, ICC/IF, IHC-P, WB
Host	Rabbit
Clonality	Polyclonal
Isotype	Rabbit IgG
Target Name	RPS15A
Species	Human
Immunogen	Recombinant protein containing to human RPS15A.
Conjugation	Un-conjugated
Alternate Names	RPS15A; Ribosomal Protein S15a; S15A; US8; Small Ribosomal Subunit Protein US8; 40S Ribosomal Protein S15a; Up-Regulated By HBV X Protein; DBA20

### Application Instructions

Application table	Application	Dilution
	FACS	1 - 3 µg/10 <sup>6</sup> cells
	ICC/IF	5 µg/ml
	IHC-P	2-5 µg/ml
	WB	0.1-0.25 µg/ml
Application Note	* The dilutions indicate recommended starting dilutions and the optimal dilutions or concentrations should be determined by the scientist.	
Observed Size	15 kDa	

### Properties

Form	Liquid
Purification	Affinity purification with immunogen.
Buffer	0.2% Na <sub>2</sub> HPO <sub>4</sub> , 0.9% NaCl and 4% Trehalose.
Stabilizer	4% Trehalose
Concentration	0.5 mg/ml
Storage instruction	For continuous use, store undiluted antibody at 2-8°C for up to a week. For long-term storage, aliquot and store at -20°C or below. Storage in frost free freezers is not recommended. Avoid repeated freeze/thaw cycles. Suggest spin the vial prior to opening. The antibody solution should be gently mixed before use.

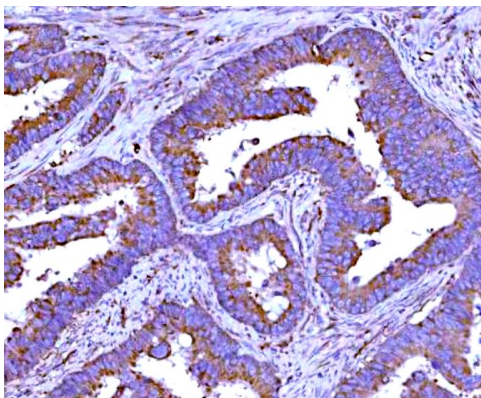
Note For laboratory research only, not for drug, diagnostic or other use.

## Bioinformation

---

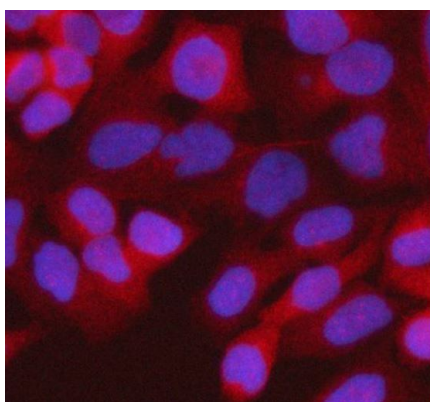
Gene Symbol	RPS15A
Gene Full Name	Ribosomal Protein S15a
Background	Ribosomes, the organelles that catalyze protein synthesis, consist of a small 40S subunit and a large 60S subunit. Together these subunits are composed of 4 RNA species and approximately 80 structurally distinct proteins. This gene encodes a ribosomal protein that is a component of the 40S subunit. The protein belongs to the S8P family of ribosomal proteins. It is located in the cytoplasm. As is typical for genes encoding ribosomal proteins, there are multiple processed pseudogenes of this gene dispersed through the genome. [provided by RefSeq, Jul 2008]
Function	Part of the small subunit (SSU) processome, first precursor of the small eukaryotic ribosomal subunit. During the assembly of the SSU processome in the nucleolus, many ribosome biogenesis factors, an RNA chaperone and ribosomal proteins associate with the nascent pre-rRNA and work in concert to generate RNA folding, modifications, rearrangements and cleavage as well as targeted degradation of pre-ribosomal RNA by the RNA exosome . [UniProt]
Calculated Mw	15 kDa
Cellular Localization	Cytoplasm; Nucleus. [UniProt]

## Images



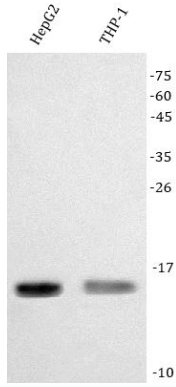
ARG45307 anti-RPS15A antibody IHC-P image

Immunohistochemistry: Human colon adenocarcinoma stained with ARG45307 anti-RPS15A antibody at 2 µg/ml dilution.



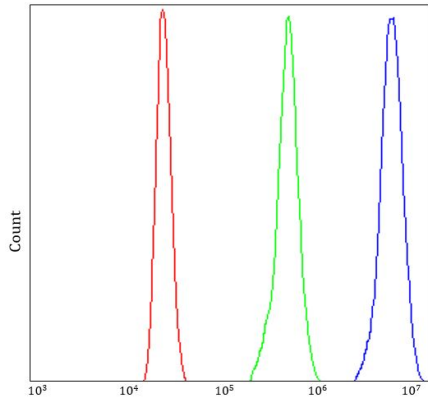
ARG45307 anti-RPS15A antibody ICC/IF image

Immunofluorescence: HeLa stained with ARG45307 anti-RPS15A antibody at 5 µg/ml dilution.



#### ARG45307 anti-RPS15A antibody WB image

Western blot: HeoG2 and THP-1 stained with ARG45307 anti-RPS15A antibody at 0.5  $\mu\text{g}/\text{ml}$  dilution.



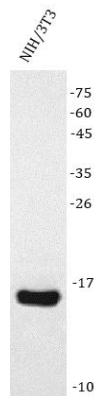
#### ARG45307 anti-RPS15A antibody FACS image

Flow Cytometry: HL-60 stained with ARG45307 anti-RPS15A antibody at 1  $\mu\text{g}/10^6$  cells dilution.



#### ARG45307 anti-RPS15A antibody WB image

Western blot: RH35 stained with ARG45307 anti-RPS15A antibody at 0.5  $\mu\text{g}/\text{ml}$  dilution.



#### ARG45307 anti-RPS15A antibody WB image

Western blot: NIH/3T3 stained with ARG45307 anti-RPS15A antibody at 0.5  $\mu\text{g}/\text{ml}$  dilution.