

## ARG45291 anti-Surf1 antibody

Package: 50 µg  
Store at: -20°C

### Summary

Product Description	Polyclonal antibody recognizes Surf1
Tested Reactivity	Hu, Ms, Rat, Mk
Tested Application	FACS, ICC/IF, WB
Host	Rabbit
Clonality	Polyclonal
Isotype	Rabbit IgG
Target Name	Surf1
Species	Human
Immunogen	Recombinant protein containing to human Surf1.
Conjugation	Un-conjugated
Alternate Names	SURF1; SURF1 Cytochrome C Oxidase Assembly Factor; Surfeit Locus Protein 1; SHY1; Surfeit 1; MC4DN1; SURF-1; CMT4K

### Application Instructions

Application table	Application	Dilution
	FACS	1 - 3 µg/10 <sup>6</sup> cells
	ICC/IF	5 µg/ml
	WB	0.25-0.5 µg/ml
Application Note	* The dilutions indicate recommended starting dilutions and the optimal dilutions or concentrations should be determined by the scientist.	
Observed Size	33 kDa	

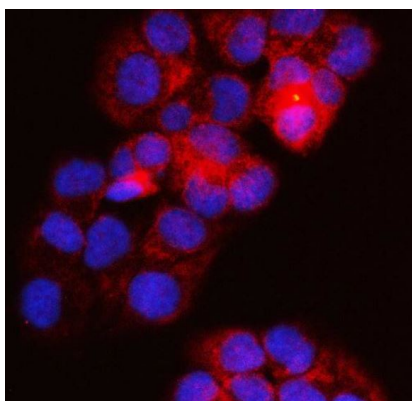
### Properties

Form	Liquid
Purification	Affinity purification with immunogen.
Buffer	0.2% Na <sub>2</sub> HPO <sub>4</sub> , 0.9% NaCl and 4% Trehalose.
Stabilizer	4% Trehalose
Concentration	0.5 mg/ml
Storage instruction	For continuous use, store undiluted antibody at 2-8°C for up to a week. For long-term storage, aliquot and store at -20°C or below. Storage in frost free freezers is not recommended. Avoid repeated freeze/thaw cycles. Suggest spin the vial prior to opening. The antibody solution should be gently mixed before use.

## Bioinformation

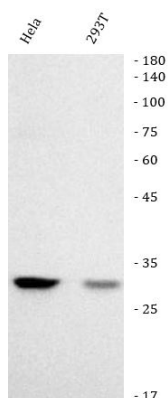
Gene Symbol	SURF1
Gene Full Name	SURF1 Cytochrome C Oxidase Assembly Factor
Background	This gene encodes a protein localized to the inner mitochondrial membrane and thought to be involved in the biogenesis of the cytochrome c oxidase complex. The protein is a member of the SURF1 family, which includes the related yeast protein SHY1 and rickettsial protein RP733. The gene is located in the surf1 gene cluster, a group of very tightly linked genes that do not share sequence similarity, where it shares a bidirectional promoter with SURF2 on the opposite strand. Defects in this gene are a cause of Leigh syndrome, a severe neurological disorder that is commonly associated with systemic cytochrome c oxidase deficiency. [provided by RefSeq, Jul 2008]
Function	Component of the MITRAC (mitochondrial translation regulation assembly intermediate of cytochrome c oxidase complex) complex, that regulates cytochrome c oxidase assembly.. [UniProt]
Calculated Mw	28 kDa
Cellular Localization	Mitochondrion inner membrane. [UniProt]

## Images



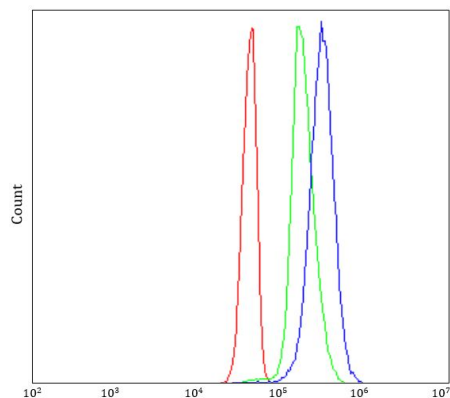
ARG45291 anti-Surf1 antibody ICC/IF image

Immunofluorescence: T47D stained with ARG45291 anti-Surf1 antibody at 5 ug/ml dilution.



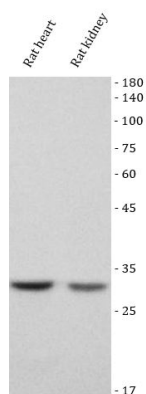
ARG45291 anti-Surf1 antibody WB image

Western blot: HeLa and 293T stained with ARG45291 anti-Surf1 antibody at 0.5 µg/ml dilution.



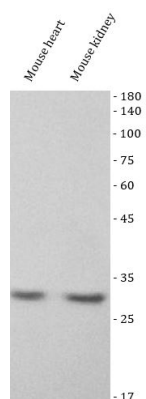
ARG45291 anti-Surf1 antibody FACS image

Flow Cytometry: Jurkat stained with ARG45291 anti-Surf1 antibody at 1  $\mu\text{g}/10^6$  cells dilution.



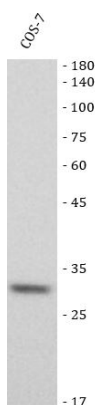
ARG45291 anti-Surf1 antibody WB image

Western blot: Rat heart and rat kidney stained with ARG45291 anti-Surf1 antibody at 0.5  $\mu\text{g}/\text{ml}$  dilution.



ARG45291 anti-Surf1 antibody WB image

Western blot: Mouse heart and mouse kidney stained with ARG45291 anti-Surf1 antibody at 0.5  $\mu\text{g}/\text{ml}$  dilution.



ARG45291 anti-Surf1 antibody WB image

Western blot: COS-7 stained with ARG45291 anti-Surf1 antibody at 0.5  $\mu\text{g}/\text{ml}$  dilution.