

ARG45289 anti-SUGT1 antibody

Package: 50 µg
Store at: -20°C

Summary

Product Description	Polyclonal antibody recognizes SUGT1
Tested Reactivity	Hu
Tested Application	FACS, ICC/IF, WB
Host	Rabbit
Clonality	Polyclonal
Isotype	Rabbit IgG
Target Name	SUGT1
Species	Human
Immunogen	Recombinant protein containing to human SUGT1.
Conjugation	Un-conjugated
Alternate Names	SUGT1; SGT1 Homolog, MIS12 Kinetochores Complex Assembly Cochaperone; SGT1; Protein SGT1 Homolog; Suppressor Of G2 Allele Of SKP1, S. Cerevisiae, Homolog Of; SGT1, Suppressor Of G2 Allele Of SKP1 (S. Cerevisiae); Suppressor Of G2 Allele Of SKP1 Homolog; SGT1, Suppressor Of G2 Allele Of SKP1; Putative 40-6-3 Protein; Protein 40-6-3; Sgt1

Application Instructions

Application table	Application	Dilution
	FACS	1 - 3 µg/10 ⁶ cells
	ICC/IF	5 µg/ml
	WB	0.25-0.5 µg/ml
Application Note	* The dilutions indicate recommended starting dilutions and the optimal dilutions or concentrations should be determined by the scientist.	
Observed Size	36 kDa	

Properties

Form	Liquid
Purification	Affinity purification with immunogen.
Buffer	0.2% Na ₂ HPO ₄ , 0.9% NaCl and 4% Trehalose.
Stabilizer	4% Trehalose
Concentration	0.5 mg/ml
Storage instruction	For continuous use, store undiluted antibody at 2-8°C for up to a week. For long-term storage, aliquot and store at -20°C or below. Storage in frost free freezers is not recommended. Avoid repeated freeze/thaw cycles. Suggest spin the vial prior to opening. The antibody solution should be gently mixed

before use.

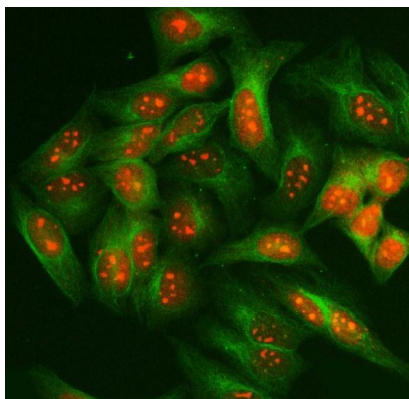
Note

For laboratory research only, not for drug, diagnostic or other use.

Bioinformation

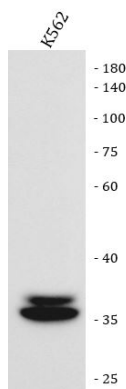
Gene Symbol	SUGT1
Gene Full Name	SGT1 Homolog, MIS12 Kinetochores Complex Assembly Co-chaperone
Background	This gene encodes a highly conserved nuclear protein involved in kinetochore function and required for the G1/S and G2/M transitions. This protein interacts with heat shock protein 90. Alternative splicing results in multiple transcript variants. Pseudogenes for this gene have been defined on several different chromosomes. [provided by RefSeq, Mar 2016]
Function	May play a role in ubiquitination and subsequent proteasomal degradation of target proteins. . [UniProt]
Calculated Mw	41 kDa
PTM	Acetylation; Isopeptide bond; Phosphoprotein; Ubl conjugation. [UniProt]
Cellular Localization	Cytoplasm; Nucleus. [UniProt]

Images



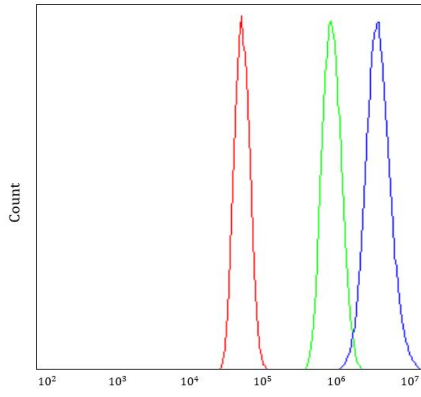
ARG45289 anti-SUGT1 antibody ICC/IF image

Immunofluorescence: HeLa stained with ARG45289 anti-SUGT1 antibody at 5 ug/ml dilution.



ARG45289 anti-SUGT1 antibody WB image

Western blot: K562 stained with ARG45289 anti-SUGT1 antibody at 0.5 µg/ml dilution.



ARG45289 anti-SUGT1 antibody FACS image

Flow Cytometry: U251 stained with ARG45289 anti-SUGT1 antibody at 1 µg/10⁶ cells dilution.