

ARG45286
anti-SA1 antibodyPackage: 50 µg
Store at: -20°C

Summary

Product Description	Polyclonal antibody recognizes SA1
Tested Reactivity	Hu
Tested Application	FACS, ICC/IF, WB
Host	Rabbit
Clonality	Polyclonal
Isotype	Rabbit IgG
Target Name	SA1
Species	Human
Immunogen	Recombinant protein containing to human SA1.
Conjugation	Un-conjugated
Alternate Names	STAG1; STAG1 Cohesin Complex Component; SA1; Cohesin Subunit SA-1; Stromal Antigen 1; SCC3A; SCC3 Homolog 1; SA-1; Sister Chromatid Cohesion 3 Homolog (S. Cerevisiae) A; Sister Chromatid Cohesion 3 Homolog A; Nuclear Protein Stromal Antigen 1; MRD47; SCC3

Application Instructions

Application table	Application	Dilution
	FACS	1 - 3 µg/10 ⁶ cells
	ICC/IF	5 µg/ml
	WB	0.25-0.5 µg/ml
Application Note	* The dilutions indicate recommended starting dilutions and the optimal dilutions or concentrations should be determined by the scientist.	
Observed Size	155 kDa	

Properties

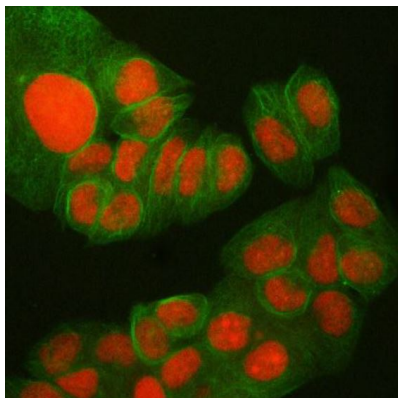
Form	Liquid
Purification	Affinity purification with immunogen.
Buffer	0.2% Na ₂ HPO ₄ , 0.9% NaCl and 4% Trehalose.
Stabilizer	4% Trehalose
Concentration	0.5 mg/ml
Storage instruction	For continuous use, store undiluted antibody at 2-8°C for up to a week. For long-term storage, aliquot and store at -20°C or below. Storage in frost free freezers is not recommended. Avoid repeated freeze/thaw cycles. Suggest spin the vial prior to opening. The antibody solution should be gently mixed before use.

Note For laboratory research only, not for drug, diagnostic or other use.

Bioinformation

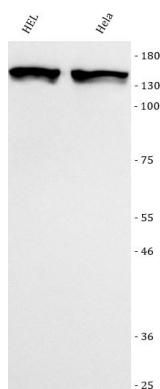
Gene Symbol	STAG1
Gene Full Name	STAG1 Cohesin Complex Component
Background	This gene is a member of the SCC3 family and is expressed in the nucleus. It encodes a component of cohesin, a multisubunit protein complex that provides sister chromatid cohesion along the length of a chromosome from DNA replication through prophase and prometaphase, after which it is dissociated in preparation for segregation during anaphase. [provided by RefSeq, Jul 2008]
Function	Component of cohesin complex, a complex required for the cohesion of sister chromatids after DNA replication. The cohesin complex apparently forms a large proteinaceous ring within which sister chromatids can be trapped. At anaphase, the complex is cleaved and dissociates from chromatin, allowing sister chromatids to segregate. The cohesin complex may also play a role in spindle pole assembly during mitosis.. [UniProt]
Calculated Mw	144 kDa
PTM	Isopeptide bond; Phosphoprotein; Ubl conjugation. [UniProt]
Cellular Localization	Centromere; Chromosome; Nucleus. [UniProt]

Images



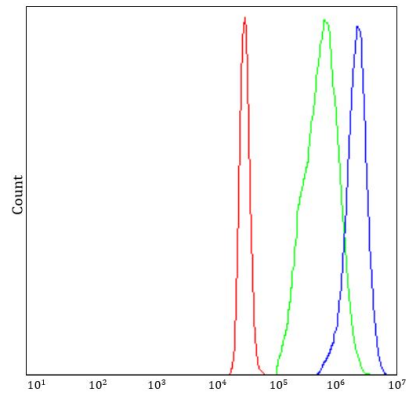
ARG45286 anti-SA1 antibody ICC/IF image

Immunofluorescence: T47D stained with ARG45286 anti-SA1 antibody at 5 ug/ml dilution.



ARG45286 anti-SA1 antibody WB image

Western blot: HEK and HeLa stained with ARG45286 anti-SA1 antibody at 0.5 µg/ml dilution.



ARG45286 anti-SA1 antibody FACS image

Flow Cytometry: U937 stained with ARG45286 anti-SA1 antibody at $1 \mu\text{g}/10^6$ cells dilution.