

ARG45228 anti-CEP250 / CNAP1 Polyclonal antibody

Package: 50 µg
Store at: -20°C

Summary

Product Description	Rabbit Polyclonal antibody recognizes CEP250 / CNAP1
Tested Reactivity	Hu, Ms, Rat
Tested Application	FACS, IHC-P, WB
Host	Rabbit
Clonality	Polyclonal
Isotype	Rabbit IgG
Target Name	CEP250 / CNAP1
Species	Human
Immunogen	Recombinant protein containing to human CEP250 / CNAP1.
Conjugation	Un-conjugated
Alternate Names	CEP250; Centrosomal Protein 250; C-NAP1; CEP2; Centrosomal Nek2-Associated Protein 1; Centrosome-Associated Protein CEP250; 250 KDa Centrosomal Protein; Centrosomal Protein 2; CNAP1; Centrosomal Protein 250kDa; EC 3.1.1.61; EC 2.6.1.9; EC 4.3.2.1; CRDHL2; Cep250; C-Nap1

Application Instructions

Application table	Application	Dilution
	FACS	1 - 3 µg/10 ⁶ cells
	IHC-P	2-5 µg/ml
	WB	0.25-0.5 µg/ml
Application Note	* The dilutions indicate recommended starting dilutions and the optimal dilutions or concentrations should be determined by the scientist.	
Observed Size	250 kDa	

Properties

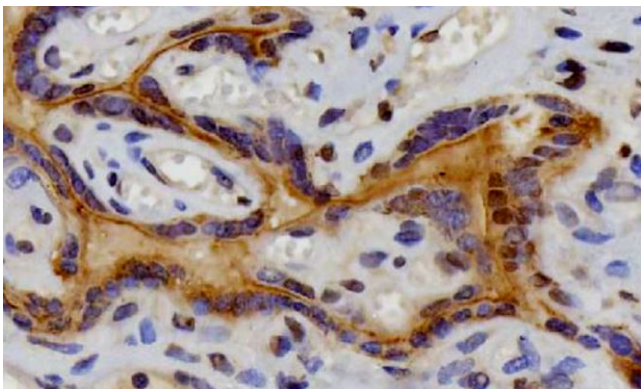
Form	Liquid
Purification	Affinity purification with immunogen.
Buffer	0.2% Na ₂ HPO ₄ , 0.9% NaCl and 4% Trehalose.
Stabilizer	4% Trehalose
Concentration	0.5 mg/ml
Storage instruction	For continuous use, store undiluted antibody at 2-8°C for up to a week. For long-term storage, aliquot and store at -20°C or below. Storage in frost free freezers is not recommended. Avoid repeated freeze/thaw cycles. Suggest spin the vial prior to opening. The antibody solution should be gently mixed before use.

Note For laboratory research only, not for drug, diagnostic or other use.

Bioinformation

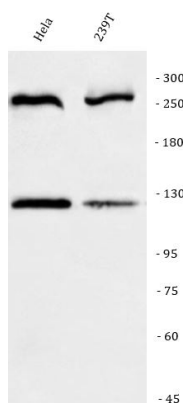
Gene Symbol	CEP250
Gene Full Name	Centrosomal Protein 250
Background	This gene encodes a core centrosomal protein required for centriole-centriole cohesion during interphase of the cell cycle. The encoded protein dissociates from the centrosomes when parental centrioles separate at the beginning of mitosis. The protein associates with and is phosphorylated by NIMA-related kinase 2, which is also associated with the centrosome. Alternative splicing results in multiple transcript variants encoding different isoforms. [provided by RefSeq, Dec 2015]
Function	May be involved in ciliogenesis. [UniProt]
Calculated Mw	281 kDa
PTM	Phosphoprotein. [UniProt]
Cellular Localization	Cell projection; Cilium; Cytoplasm; Cytoskeleton. [UniProt]

Images



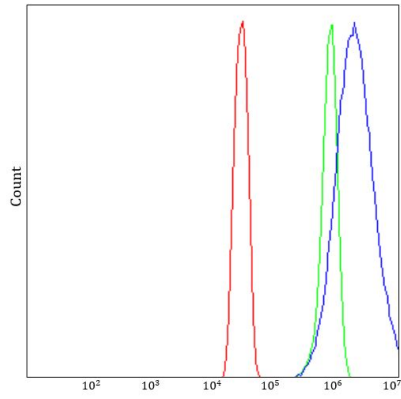
ARG45228 anti-CEP250 / CNAP1 Polyclonal antibody IHC-P image

Immunohistochemistry: Human placenta stained with ARG45228 anti-CEP250 / CNAP1 Polyclonal antibody at 2 µg/ml dilution.



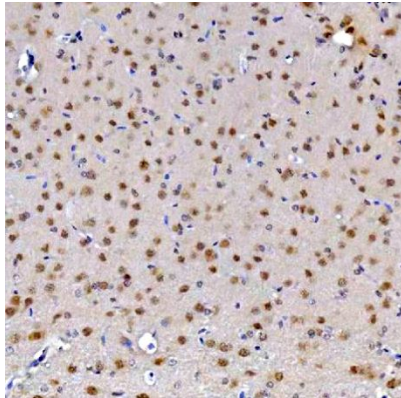
ARG45228 anti-CEP250 / CNAP1 Polyclonal antibody WB image

Western blot: HeLa and 293T stained with ARG45228 anti-CEP250 / CNAP1 Polyclonal antibody at 0.5 µg/ml dilution.



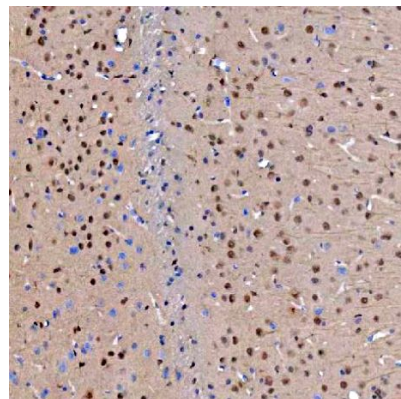
ARG45228 anti-CEP250 / CNAP1 Polyclonal antibody FACS image

Flow Cytometry: SiHa stained with ARG45228 anti-CEP250 / CNAP1 Polyclonal antibody at 1 µg/10⁶ cells dilution.



ARG45228 anti-CEP250 / CNAP1 Polyclonal antibody IHC-P image

Immunohistochemistry: Rat brain stained with ARG45228 anti-CEP250 / CNAP1 Polyclonal antibody at 2 µg/ml dilution.



ARG45228 anti-CEP250 / CNAP1 Polyclonal antibody IHC-P image

Immunohistochemistry: Mouse brain stained with ARG45228 anti-CEP250 / CNAP1 Polyclonal antibody at 2 µg/ml dilution.