

ARG45155 anti-TIMM17A antibody

Package: 50 µg
Store at: -20°C

Summary

Product Description	Rabbit Polyclonal antibody recognizes TIMM17A
Tested Reactivity	Hu, Ms, Rat
Tested Application	FACS, ICC/IF, IHC-P, WB
Host	Rabbit
Clonality	Polyclonal
Isotype	Rabbit IgG
Target Name	TIMM17A
Species	Human
Immunogen	Synthetic peptide corresponding to middle region of human TIMM17A.
Conjugation	Un-conjugated
Alternate Names	TIMM17A; translocase of inner mitochondrial membrane 17 A; TIM17A; Inner membrane preprotein translocase Tim17a; Mitochondrial import inner membrane translocase subunit Tim17-A; TIM17

Application Instructions

Application table	Application	Dilution
	FACS	1 - 3 µg/10 ⁶ cells
	ICC/IF	2 µg/ml
	IHC-P	0.5-1 µg/ml
	WB	0.1-0.5 µg/ml
Application Note	* The dilutions indicate recommended starting dilutions and the optimal dilutions or concentrations should be determined by the scientist.	
Observed Size	18 kDa	

Properties

Form	Liquid
Purification	Affinity purification with immunogen.
Buffer	0.2% Na ₂ HPO ₄ , 0.9% NaCl, 0.05% Sodium azide and 4% Trehalose.
Preservative	0.05% Sodium azide
Stabilizer	4% Trehalose
Concentration	0.5 mg/ml
Storage instruction	For continuous use, store undiluted antibody at 2-8°C for up to a week. For long-term storage, aliquot and store at -20°C or below. Storage in frost free freezers is not recommended. Avoid repeated

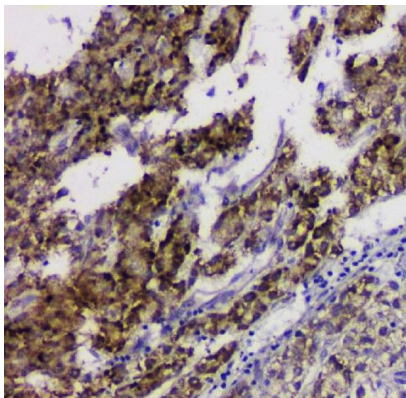
freeze/thaw cycles. Suggest spin the vial prior to opening. The antibody solution should be gently mixed before use.

Note For laboratory research only, not for drug, diagnostic or other use.

Bioinformation

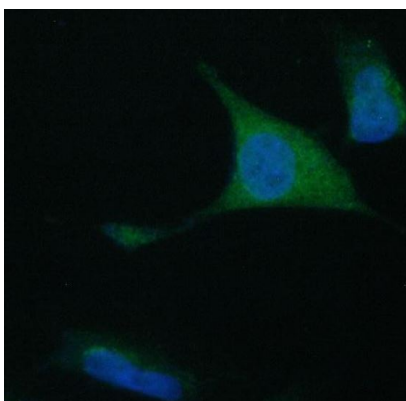
Gene Symbol	TIMM17A
Gene Full Name	translocase of inner mitochondrial membrane 17 A
Background	Predicted to contribute to protein transmembrane transporter activity. Predicted to be involved in protein import into mitochondrial matrix. Located in mitochondrial inner membrane and nucleoplasm. Part of TIM23 mitochondrial import inner membrane translocase complex. [provided by Alliance of Genome Resources, Nov 2024]
Function	Essential component of the TIM23 complex, a complex that mediates the translocation of transit peptide-containing proteins across the mitochondrial inner membrane. [UniProt]
Calculated Mw	18 kDa
PTM	Disulfide bond. [UniProt]
Cellular Localization	Mitochondrion inner membrane. [UniProt]

Images



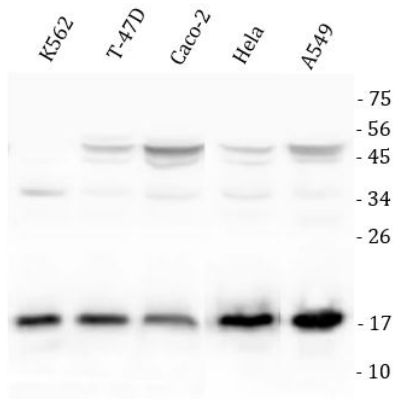
ARG45155 anti-TIMM17A antibody IHC-P image

Immunohistochemistry: Human liver cancer stained with ARG45155 anti-TIMM17A antibody at 1 µg/ml dilution.



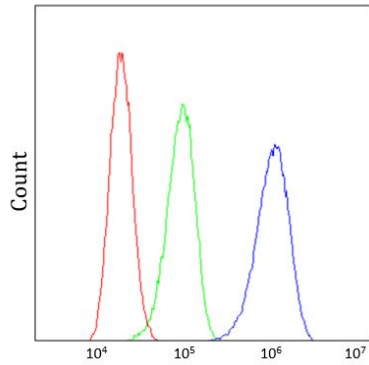
ARG45155 anti-TIMM17A antibody ICC/IF image

Immunofluorescence: A549 stained with ARG45155 anti-TIMM17A antibody at 2 µg/ml dilution.



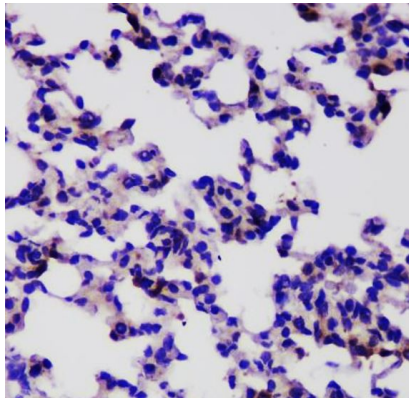
ARG45155 anti-TIMM17A antibody WB image

Western blot: K562, T-47D, Caco-2, HeLa, and A549 stained with ARG45155 anti-TIMM17A antibody at 0.5 $\mu\text{g}/\text{ml}$ dilution.



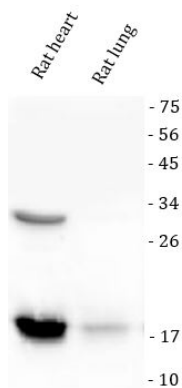
ARG45155 anti-TIMM17A antibody FACS image

Flow Cytometry: A431 stained with ARG45155 anti-TIMM17A antibody at 1 $\mu\text{g}/10^6$ cells dilution.



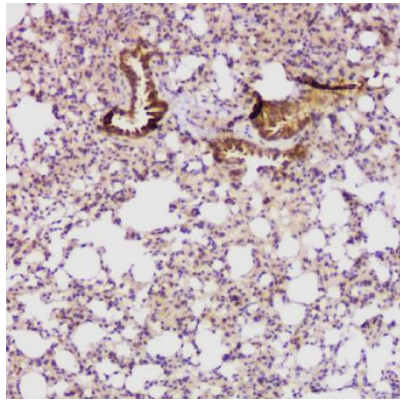
ARG45155 anti-TIMM17A antibody IHC-P image

Immunohistochemistry: Rat lung tissue stained with ARG45155 anti-TIMM17A antibody at 1 $\mu\text{g}/\text{ml}$ dilution.



ARG45155 anti-TIMM17A antibody WB image

Western blot: Rat heart and rat lung stained with ARG45155 anti-TIMM17A antibody at 0.5 $\mu\text{g}/\text{ml}$ dilution.



ARG45155 anti-TIMM17A antibody IHC-P image

Immunohistochemistry: Mouse lung stained with ARG45155 anti-TIMM17A antibody at 1 μ g/ml dilution.



ARG45155 anti-TIMM17A antibody WB image

Western blot: Mouse heart and mouse brain stained with ARG45155 anti-TIMM17A antibody at 0.5 μ g/ml dilution.