

ARG45049 anti-Fibrillin 1 antibody [RM463]

Package: 50 µl
Store at: -20°C

Summary

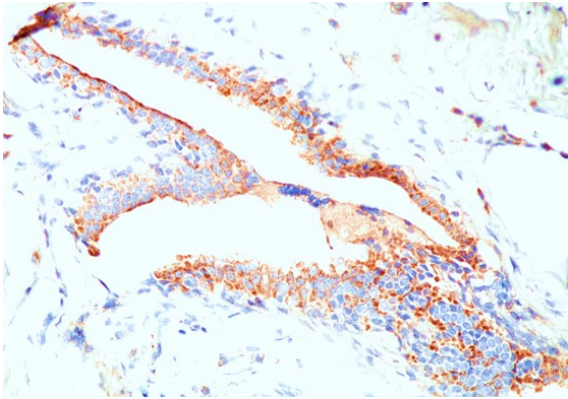
Product Description	Rabbit monoclonal antibody [RM463] recognizes Fibrillin 1.
Tested Reactivity	Hu
Tested Application	IHC-P, WB
Host	Rabbit
Clonality	Monoclonal
Clone	RM463
Isotype	IgG
Target Name	Fibrillin 1
Species	Human
Conjugation	Un-conjugated
Alternate Names	MASS ; OCTD ; SGS ; FBN ; Fibrillin-1 ; Asprosin ; MFS1 ; WMS ; Epididymis Secretory Sperm Binding Protein ; Fibrillin 1 (Marfan Syndrome) ; Fibrillin-1 Preproprotein ; Marfan Syndrome ; Fibrillin 15 ; GPHYSD2 ; ACMICD ; ECTOL1 ; MFLS ; SSKS ; WMS2

Application Instructions

Application table	Application	Dilution
	IHC-P	1:100 - 1:200
	WB	1:1000 - 1:25000
Application Note	* The dilutions indicate recommended starting dilutions and the optimal dilutions or concentrations should be determined by the scientist.	

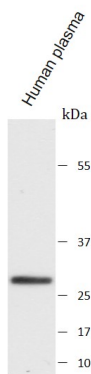
Properties

Form	Liquid
Purification	Protein A affinity purified.
Buffer	PBS with 50% Glycerol, 1% BSA and 0.09% sodium azide
Preservative	0.09% sodium azide
Stabilizer	50% Glycerol, 1% BSA and 0.09%
Concentration	1 mg/ml
Storage instruction	For continuous use, store undiluted antibody at 2-8°C for up to a week. For long-term storage, aliquot and store at -20°C or below. Storage in frost free freezers is not recommended. Avoid repeated freeze/thaw cycles. Suggest spin the vial prior to opening. The antibody solution should be gently mixed before use.
Note	For laboratory research only, not for drug, diagnostic or other use.



ARG45049 anti-Fibrillin 1 antibody [RM463] IHC-P image

Immunohistochemistry: Human breast tissue stained with ARG45049 anti-Fibrillin 1 antibody [RM463] at 1:100 dilution.



ARG45049 anti-Fibrillin 1 antibody [RM463] WB image

Western blot: Human plasma stained with ARG45049 anti-Fibrillin 1 antibody [RM463] at 1:25000 dilution.
